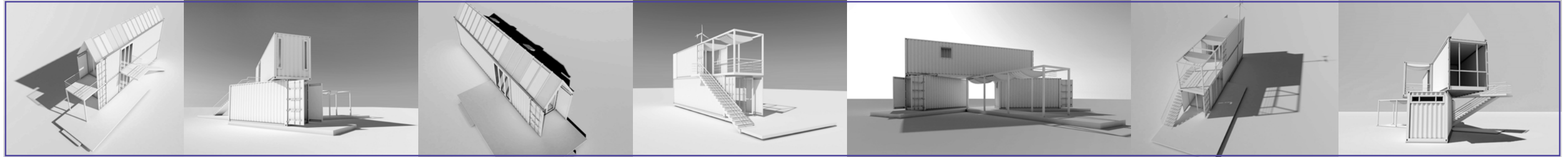


N&C #019

Tiny Houses



7 Prototypes*

December 2021



* For illustration not construction

Contents

TH #1: Single Unit (1 x 40')	4
TH #2: Single Unit (1 x 20')	8
TH #3: Multi-unit (2 x 40')	12
TH #4: Single Family Unit (4 x 20')	16
Interiors	20
TH #5: Multi-unit (4 x 20')	24
TH #6: Multi-unit mixed (2 x 20' and 1 x 40')	28
TH #7: Multi-unit mixed (1 x 40' and 1 x 20')	32
Portfolio Claude Yacoub	36



Namma & Containers, LLC

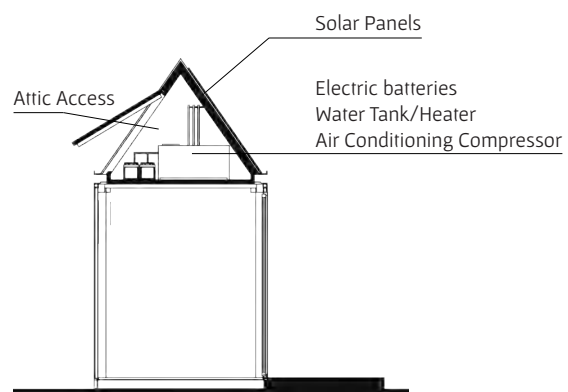
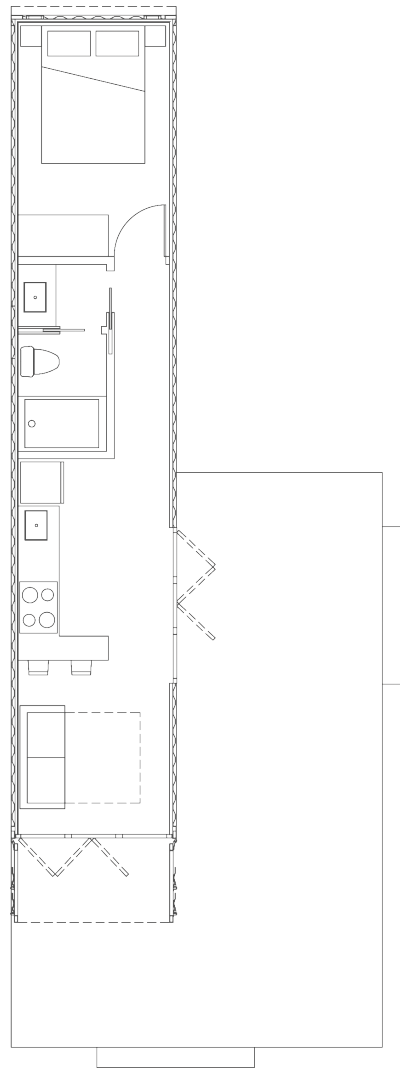
TH #1



Single Unit

1 Container 40'
320 sq. ft.

Living, Dining, Kitchen, Bedroom and Bathroom
For 2 - 4 persons



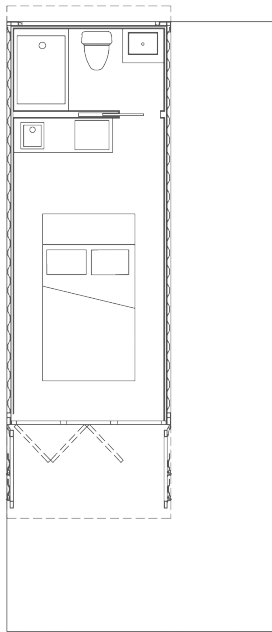
TH #2



Single Unit

1 Container 20'
160 sq. ft.

Bedroom, Kitchenette and Bathroom
For 2 persons



TH #3

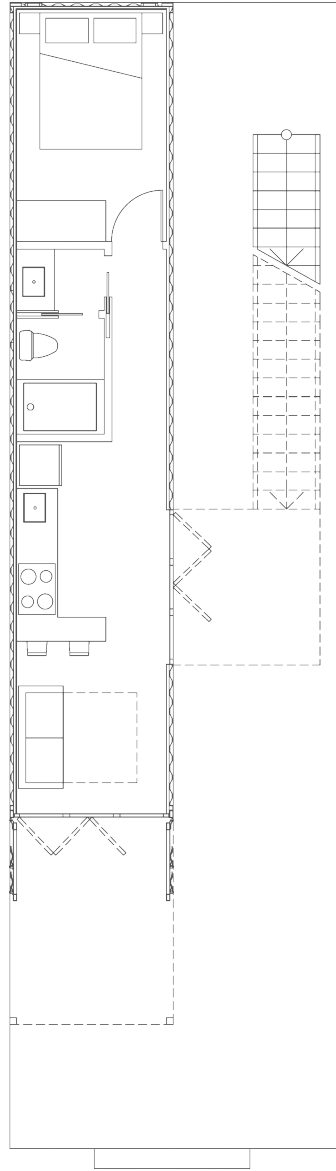


Multi-unit

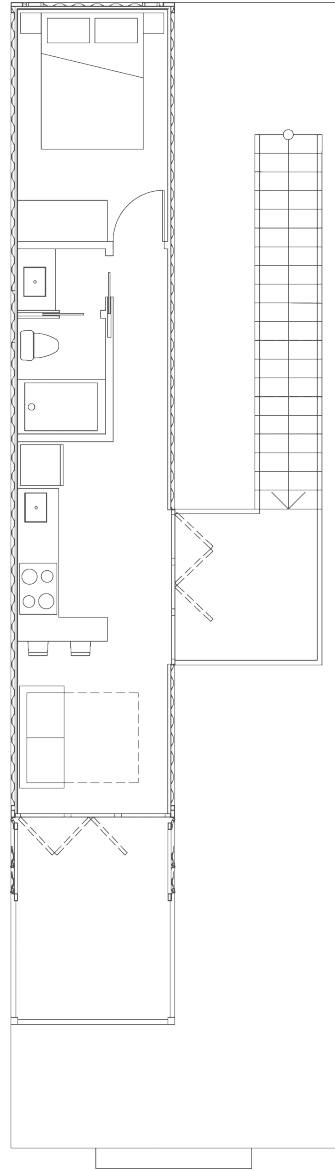
Unit A: Level 1
1 Containers 40'
320 sq. ft.

Living, Dining, Kitchen, Bedroom and Bathroom
For 2 - 4 persons

Unit B: Level 2
Same as level 1



Level 1



Level 2



TH #4



Single Family Unit

4 containers 20'
640 sq. ft. (160 sq. ft. each)

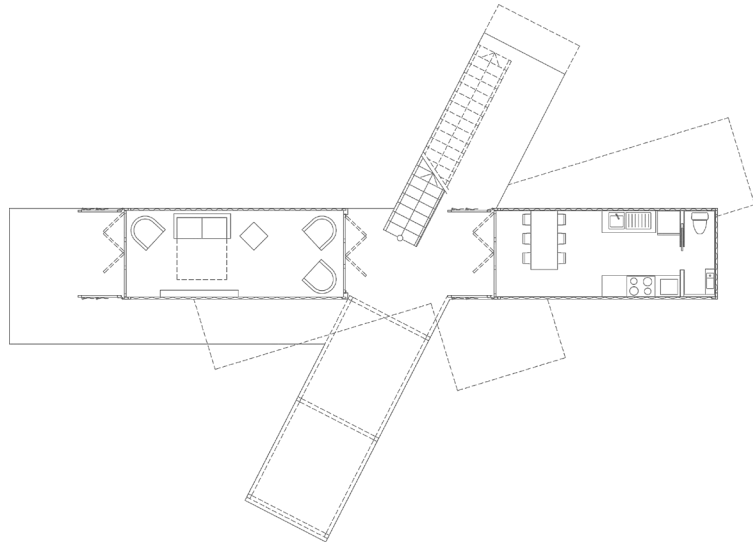
For 6 persons

Level 1:

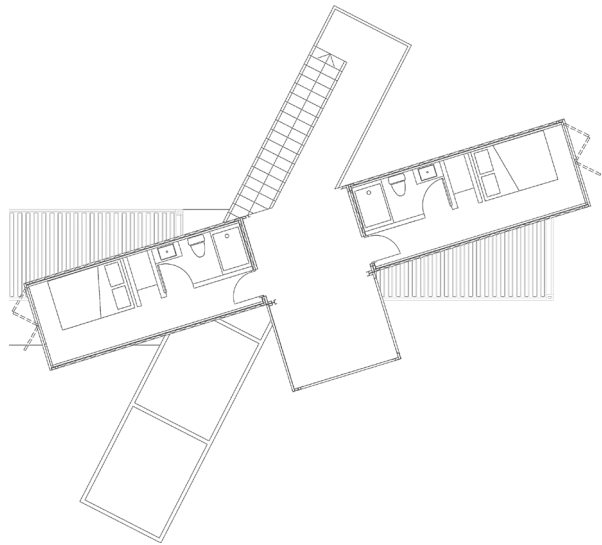
Living, Dining, Kitchen, Half Bathroom

Level 2:

2 Bedrooms and 2 Bathrooms



Level 1



Level 2



Interiors





TH #5

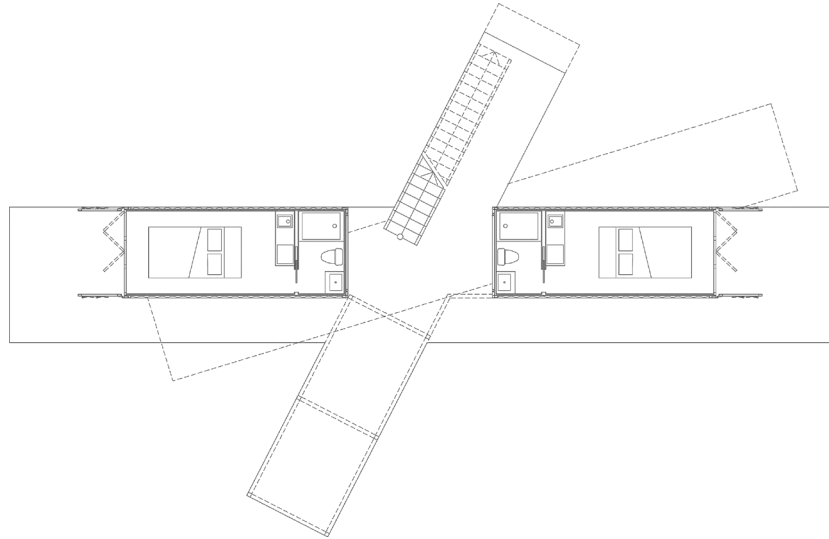


Multi-unit

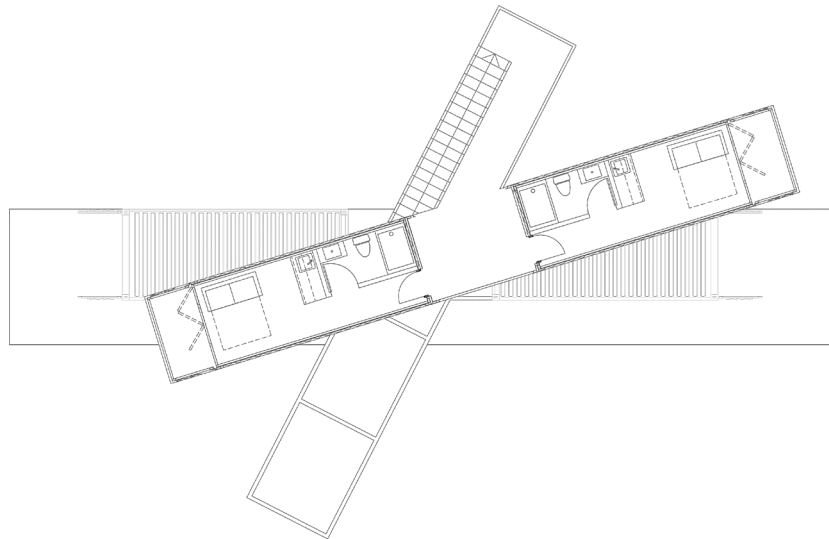
4 Containers 20'
640 sq. ft. (160 sq. ft. each)

Units A and B: Level 1
Units C and D: Level 2

For 2 persons per unit:
Bedroom, Kitchenette and Bathroom



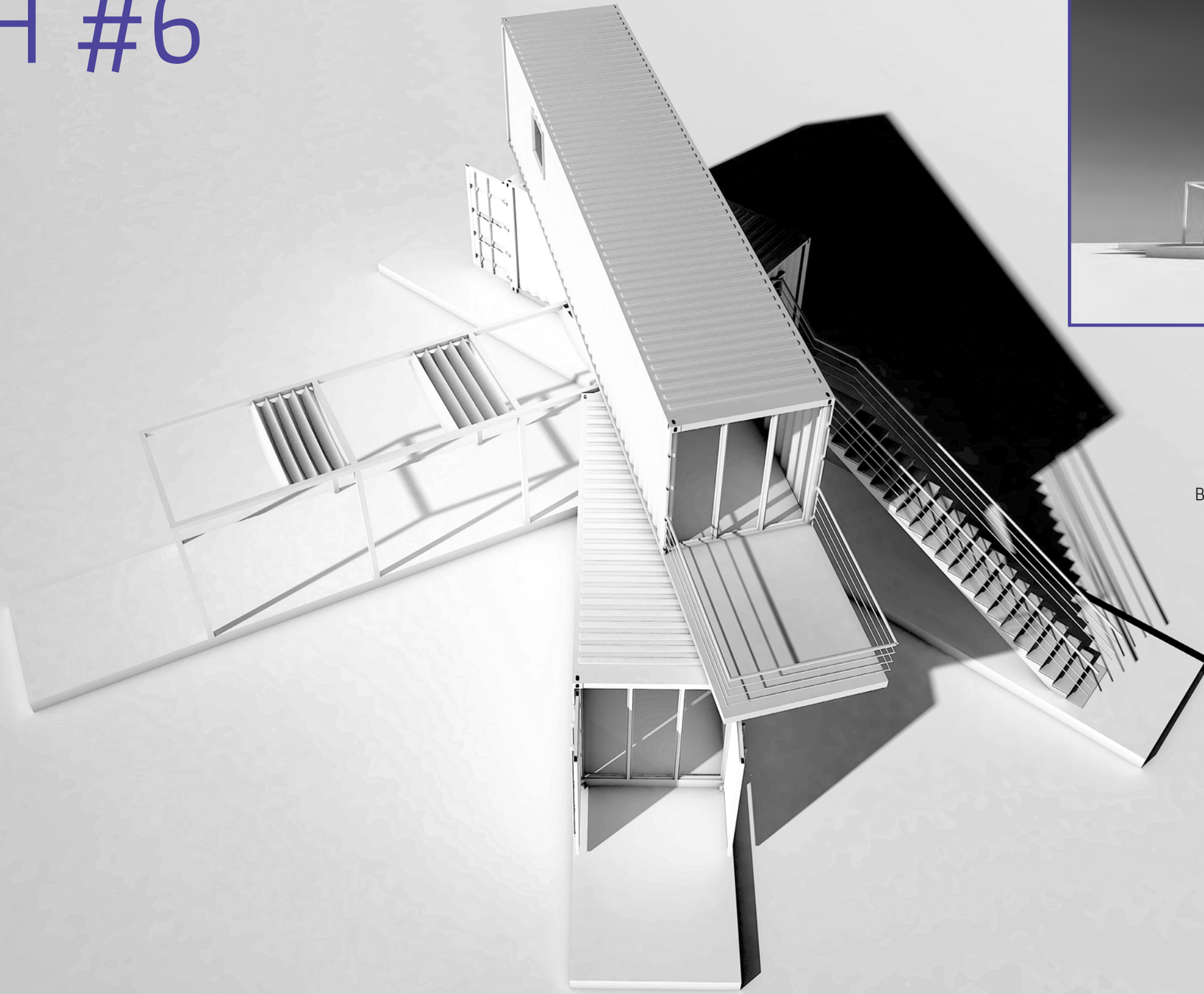
Level 1



Level 2

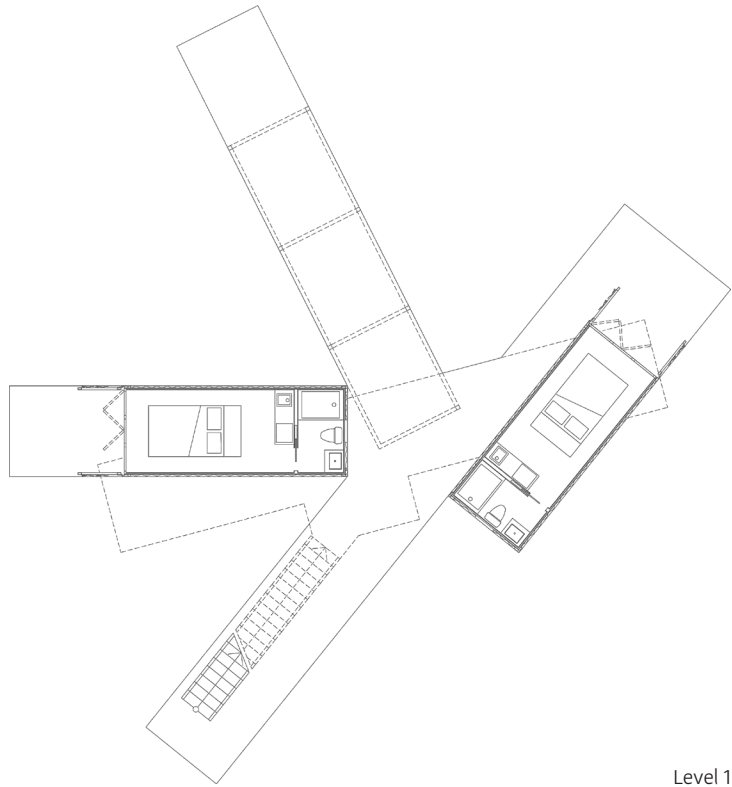


TH #6

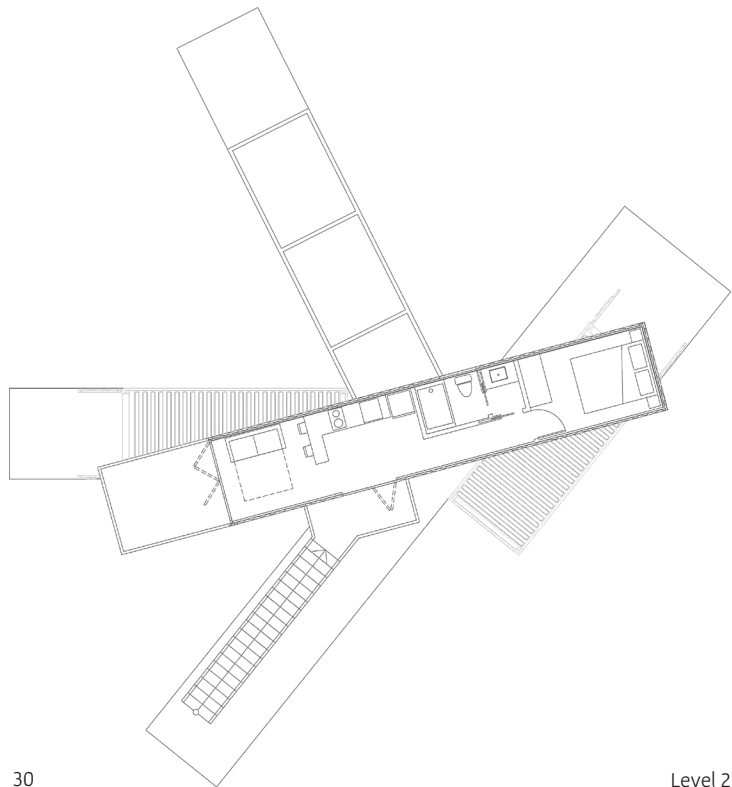


Multi-unit mixed

- 2 Containers 20'
320 sq. ft. (160 sq. ft. each)
Units A and B: Level 1
For 2 persons per unit
Bedroom, Kitchenette and Bathroom
- 1 container 40'
320 sq. ft.
Unit C: Level 2
For 2 - 4 persons
Living, Dining, Kitchen,
Bedroom and Bathroom



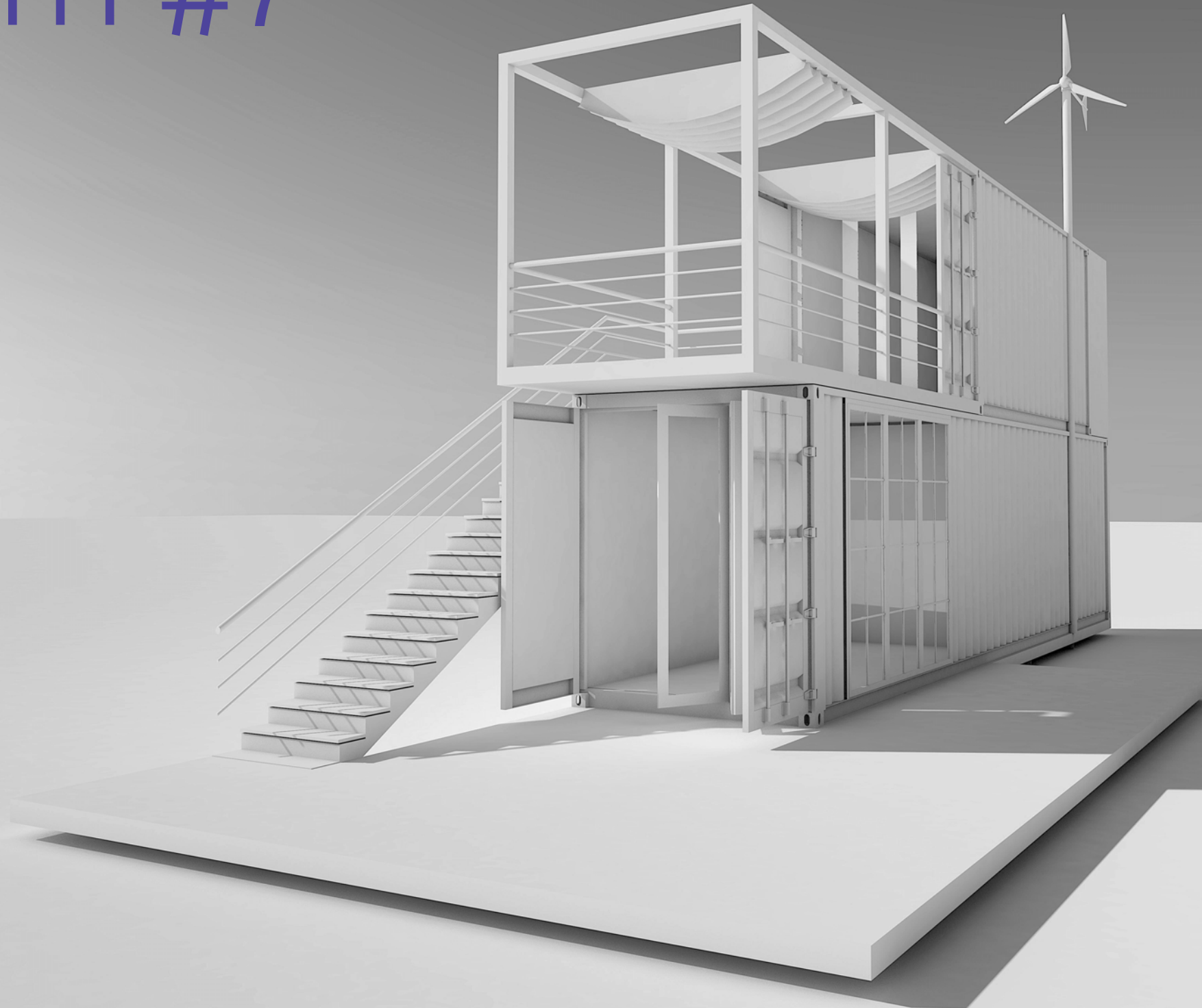
Level 1



Level 2



TH #7



Multi-unit mixed

1 container 40'
320 sq. ft.

Unit A: Level 1

For 2 - 4 persons

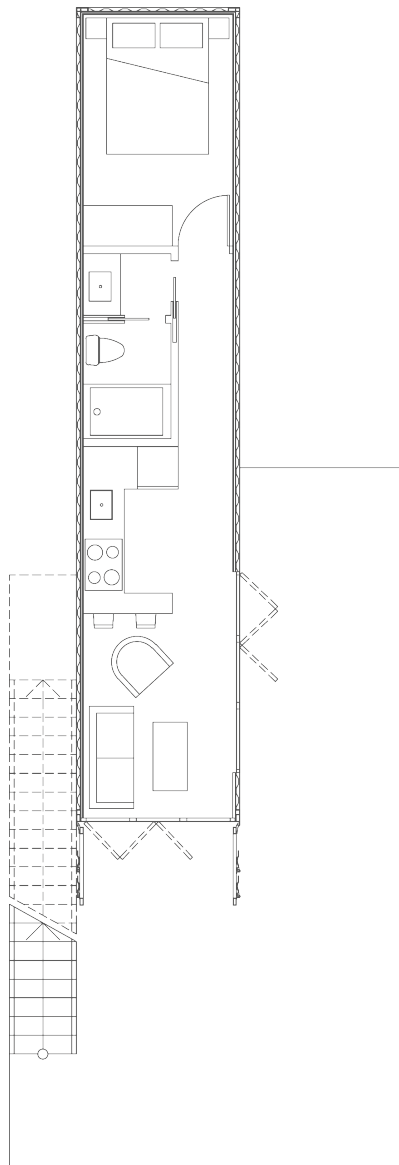
Living, Dining, Kitchen,
Bedroom and Bathroom

1 Containers 20'
160 sq. ft.

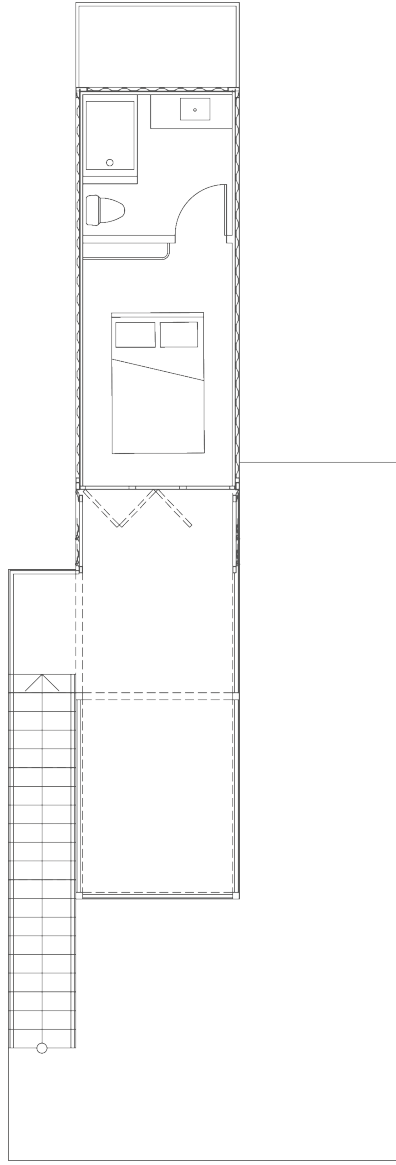
Unit B: Level 2

For 2 persons

Bedroom, Kitchenette and Bathroom



Level 1



Level 2





Claude YACOUB

Architect DESA, France

Born in Martinique, France (1962), lived most of his life in Fort-de-France and Paris, as well as in Damas. Lives in Houston since 2020.

Architect, graduated from the École Spéciale d'Architecture (ESA), Paris (1989). He also holds a Master in sustainable development from the same architecture school ESA (2008) and a Ph.D. in Information Science and Communication from Université Paris 8 (2011).

Strong with a 30-year experience as an independent architect in France, he has completed many projects in the fields of architecture, urbanism, design, and artistic structures.

Simultaneously, he has been teaching for 25 years: architecture, urbanism, design, and fine arts (Paris, Fort-de-France, Damas and Montreal).

As an associate researcher at the Citu-Paragraphe laboratory, Université Paris 8, he has published numerous scientific publications (personal articles and co-directed publications) and participated in international conferences.

Moreover, he is strongly involved in the associative field with the creation of a popular university, which has worked to train architects and engineers on the topics of rebuilding after natural disasters and conflicts.

