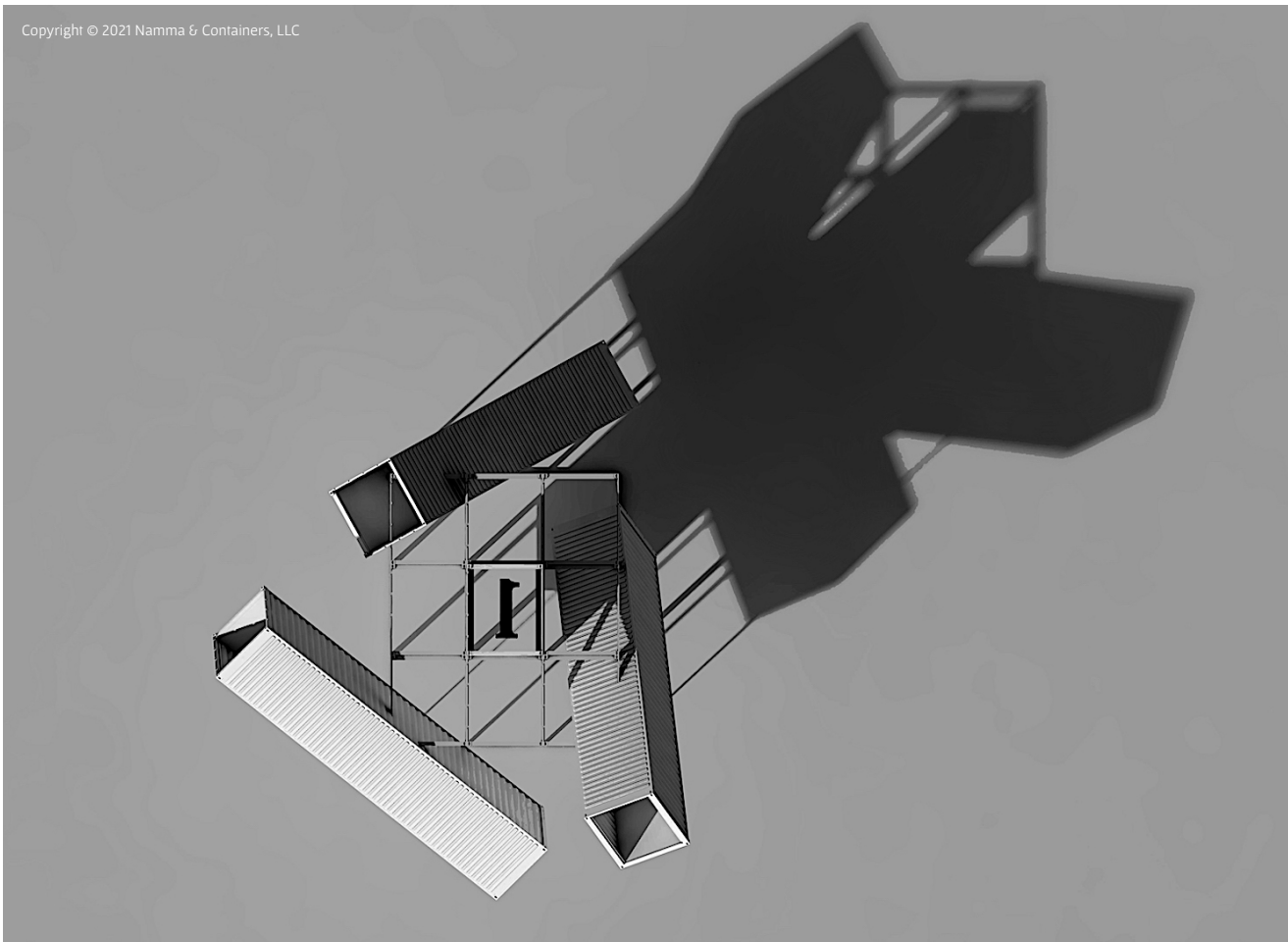


N&C #029 – July 4

Architectural Sculpture to Celebrate “The Fourth of July”!



Namma & Containers, LLC

1940 Fountain View Drive, PO Box 477
Houston, TX 77057, USA
+1 (346) 401-6427
contact@nammacontainers.com
nammacontainers.com



July 4 is an urban sculpture commemorating July 4, 1776: Independence Day.

Structure made in 9 numerated copies (J4 #1 to J4 #9). Each copy will be “unique” and personalized according to the town or county where it will be set.

For this, a survey of the chosen site will be done with a maximum of details: history of the location, neighboring urban axes, neighboring structures, geographical orientation, prevailing winds, other natural constraints, etc.

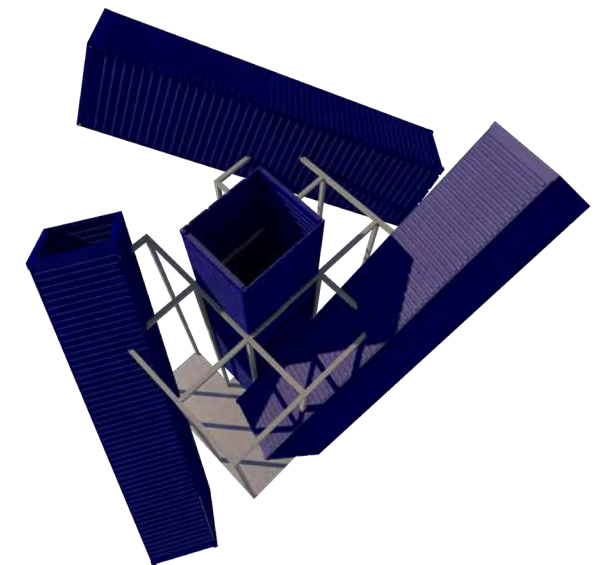
With this technical dossier in hand, we will be able thus to define the different elements that will make indeed each structure a unique one: slopes of the 4 containers; materials for the floor, structure and containers coverings; colors and marking; lights and sounds.

This structure, in its basic format, is made of a framework of 7 (month) frames with the dimensions of the containers of 40' High Cube and 4 (day) containers of 40' High Cube. These containers are fixed but due to their positioning in space, they seem to be swirling in the air. Finally, the 4 numbers – 1, 7, 7, 6 (year) – are cut in stainless steel plates and hung inside the containers that look like telescopes pointing towards the sky.

At night, these 4 symbolical numbers are projected on the floor and shed light on the pedestrian's steps. The containers are transformed on light canons illuminating the sky.

The slab supporting this structure measures 24' x 28'6". All its volumes projected on the floor measure approximately 70' x 70'. A much larger field is required in order for this sculpture to blossom and give its full measure.

Claude Yacoub
Houston, September 27, 2021



* The photographs of the sites where the “July 4” are set in this file are from Claude Yacoub:
Cincinnati, OH – Houston, TX – Los Angeles, CA – Paris, TX – San Francisco, CA – Syracuse, NY.



1940 Fountain View Dr. #477
Houston, TX 77057, USA
+1 (346) 401-6427
contact@nammacontainers.com
www.nammacontainers.com

PROJECT:

#029
JULY 4
SCULPTURE

REVISIONS

Number	Date

DESIGN & CONSTRUCTION DOCUMENTS:

THESE DRAWINGS, SPECIFICATIONS, DESIGN, AND ARRANGEMENTS REPRESENTED HEREBY ARE AND SHALL REMAIN THE PROPERTY OF "Namma & Containers, LLC". NO PART THEREOF SHALL BE COPIED, REPRODUCED, OR USED IN CONNECTION WITH ANY WORK OR PROJECT OR BY ANY OTHER PERSON FOR ANY PURPOSE OTHER THAN THE SPECIFIC PROJECT FOR WHICH THEY HAVE BEEN PREPARED AND DEVELOPED WITHOUT WRITTEN CONSENT OF "Namma & Containers, LLC". VISUAL CONTACT WITH THESE DRAWINGS OR SPECIFICATIONS SHALL CONSTITUTE CONCLUSIVE EVIDENCE OF ACCEPTANCE OF THESE RESTRICTIONS.

NOTE:

• REFER TO SPECIFICATIONS FOR ALL WORK
• CONSULT ALL APPLICABLE CODES
• ALL WORK SHALL BE IN ACCORDANCE WITH ALL DIMENSIONS AND LOCATIONS OF MATERIALS
• ANY DIMENSIONS FOR MATERIALS NOT SHOWN SHALL BE IN ACCORDANCE WITH THE MANUFACTURER'S SPECIFICATIONS

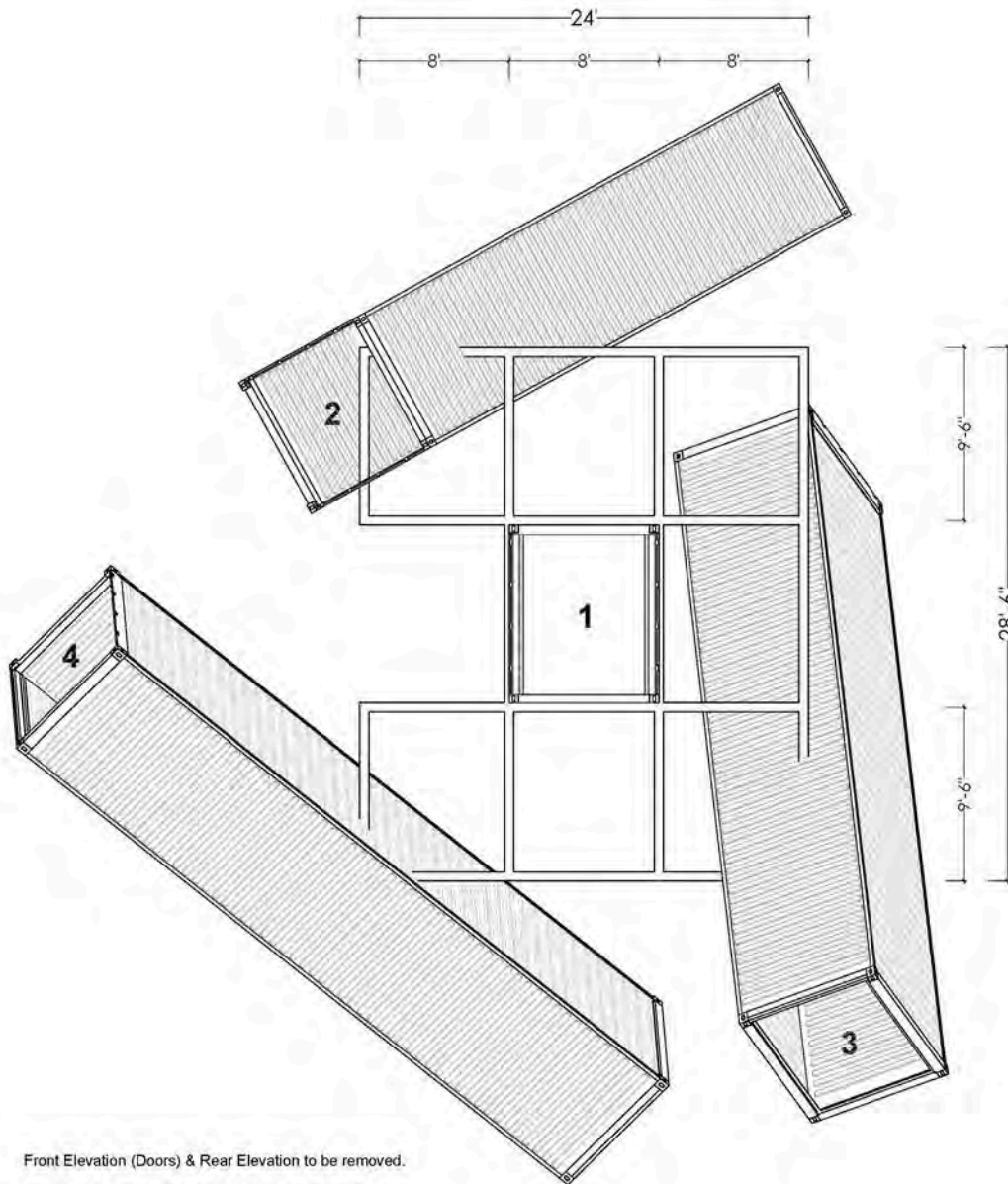
DATE: 8/22/2021

DRAWN: SR APPR: CY

SITE PLAN
ELEVATION

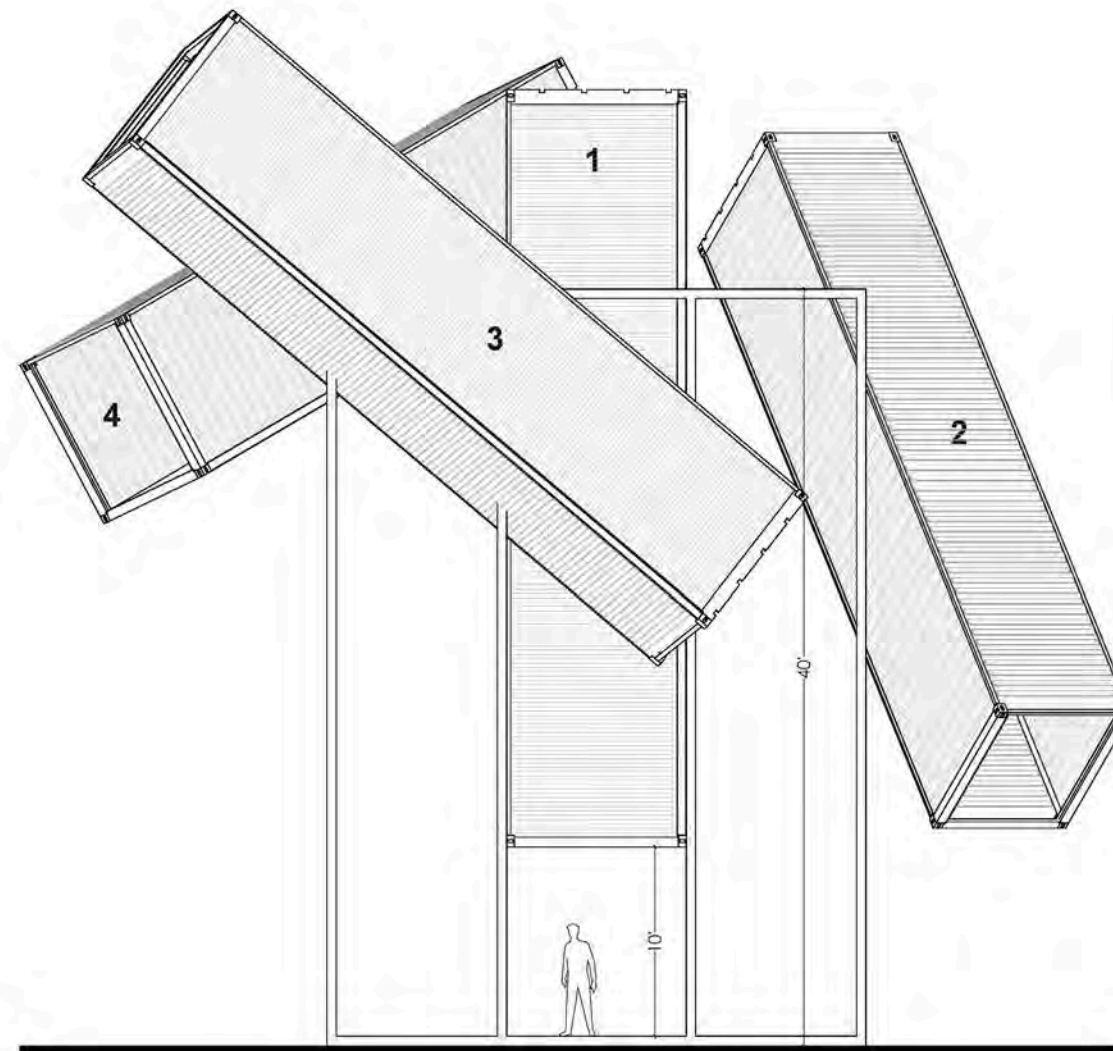
SHEET No.

A-1.0



Front Elevation (Doors) & Rear Elevation to be removed.

Bottom to be removed and to be replaced by Roof Top.



1 SITE PLAN
SCALE: 1/4"= 1'-0"

2 ELEVATION
SCALE: 1/4"= 1'-0"



1940 Fountain View Dr. #477
Houston, TX 77057, USA
+1 (346) 401-6427
contact@nammacontainers.com
www.nammacontainers.com

PROJECT:

#009
JULY 4
INSTALLATION

REVISIONS

Number	Date

DESIGN & CONSTRUCTION DOCUMENTS:

THESE DRAWINGS, SPECIFICATIONS, DESIGNS, AND ARRANGEMENTS REPRESENTED THEREBY ARE AND SHALL REMAIN THE PROPERTY OF "Namma & Containers, LLC". NO PART THEREOF SHALL BE COPIED, DISCLOSED TO OTHERS OR USED IN CONNECTION WITH ANY WORK OR PROJECT OR BY ANY OTHER PERSON FOR ANY PURPOSE OTHER THAN THE SPECIFIC PROJECT FOR WHICH THEY HAVE BEEN PREPARED AND DEVELOPED WITHOUT WRITTEN CONSENT OF "Namma & Containers, LLC". VISUAL CONTACT WITH THESE DRAWINGS OR SPECIFICATIONS SHALL CONSTITUTE CONCLUSIVE EVIDENCE OF ACCEPTANCE OF THESE RESTRICTIONS.

NOTE:

BEFORE PROCEEDING WITH ANY WORK OR ORDER ANY MATERIALS EITHER ARCHITECT OR OWNER SHALL VERIFY ALL DIMENSIONS AND LOCATIONS OF MATERIALS AND THEIR INTERRELATIONSHIP AT THE BUILDING SITE, AND SHALL BE RESPONSIBLE FOR THEIR CORRECTNESS.

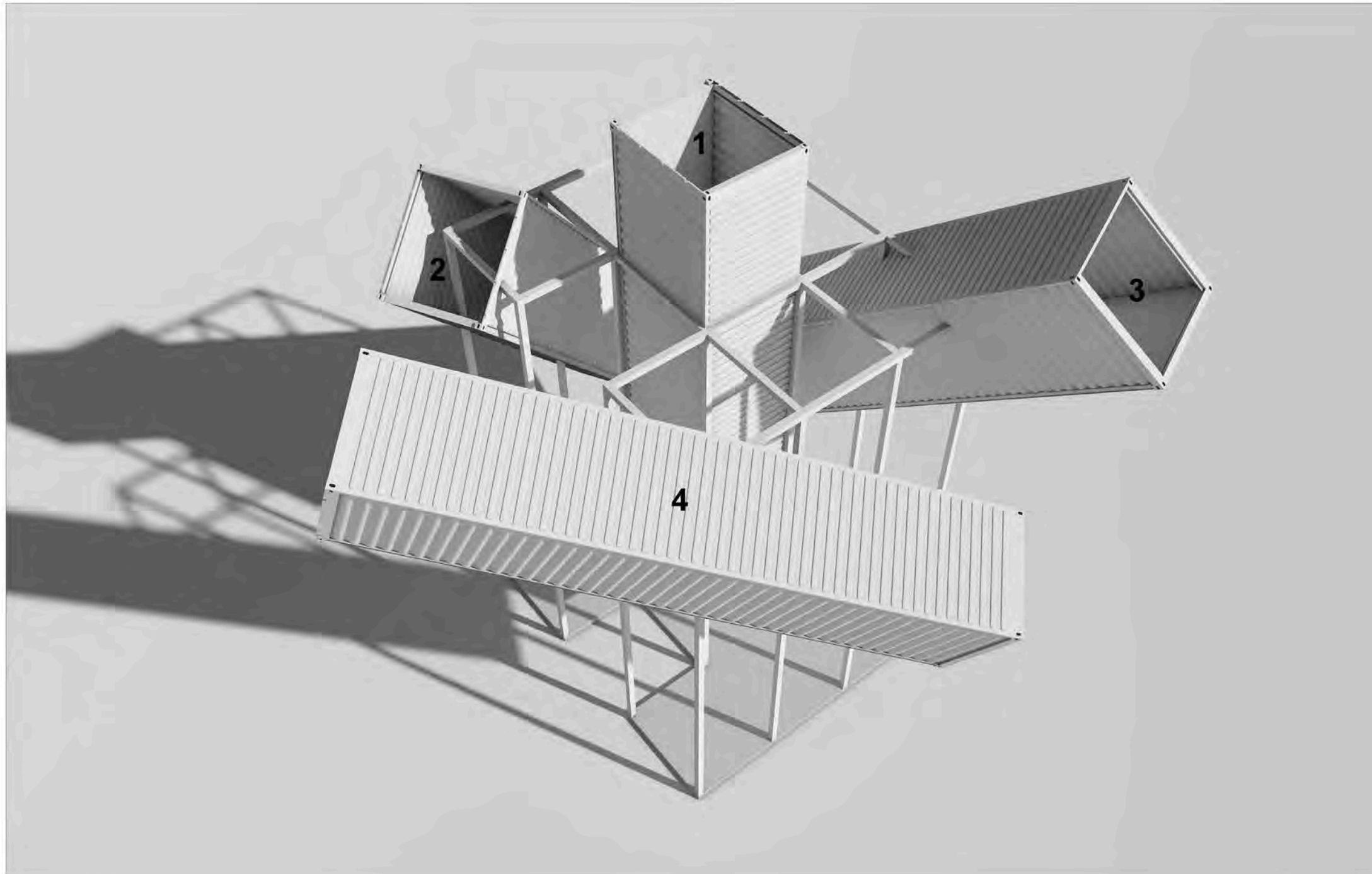
DATE: 8/22/2021

DRAWN: SR	APPR: CY
--------------	-------------

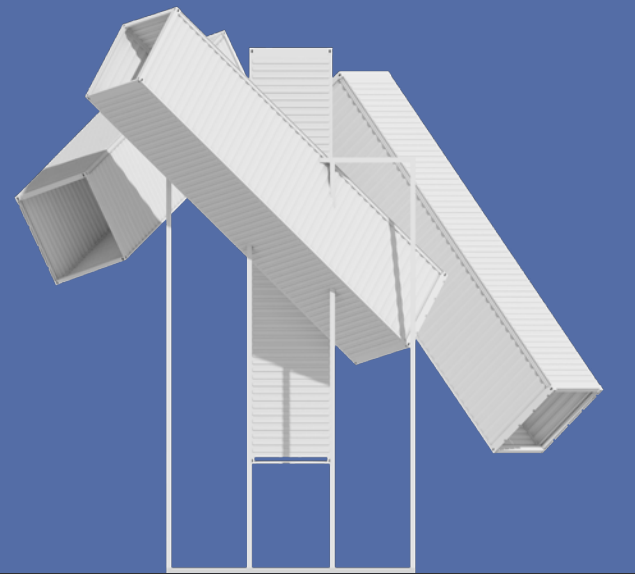
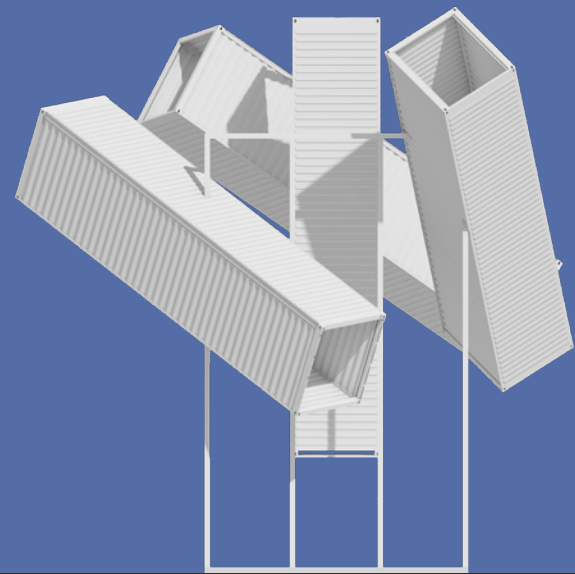
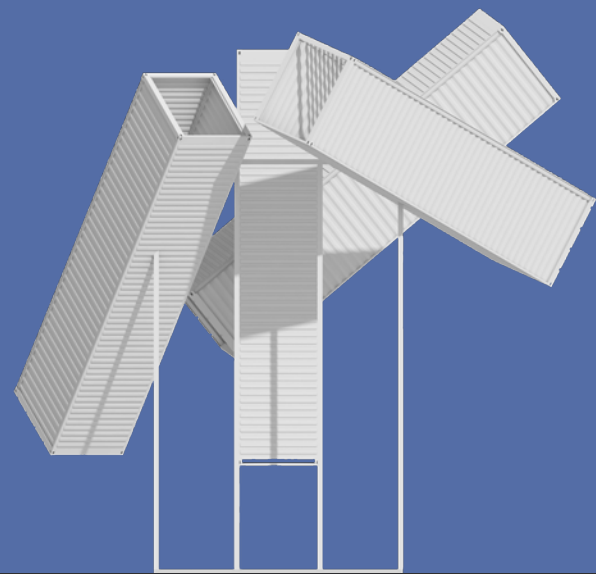
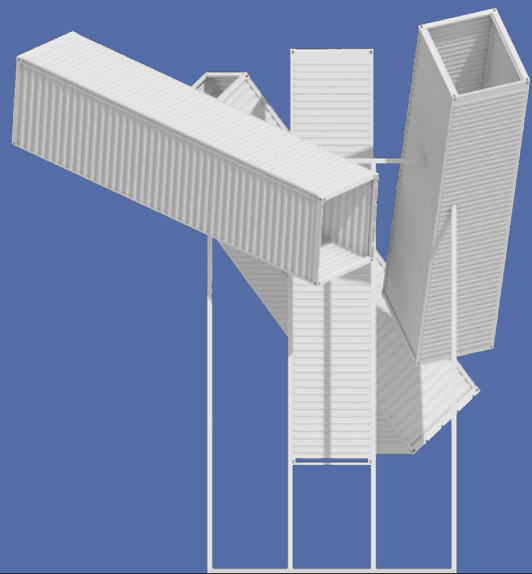
3D MODEL

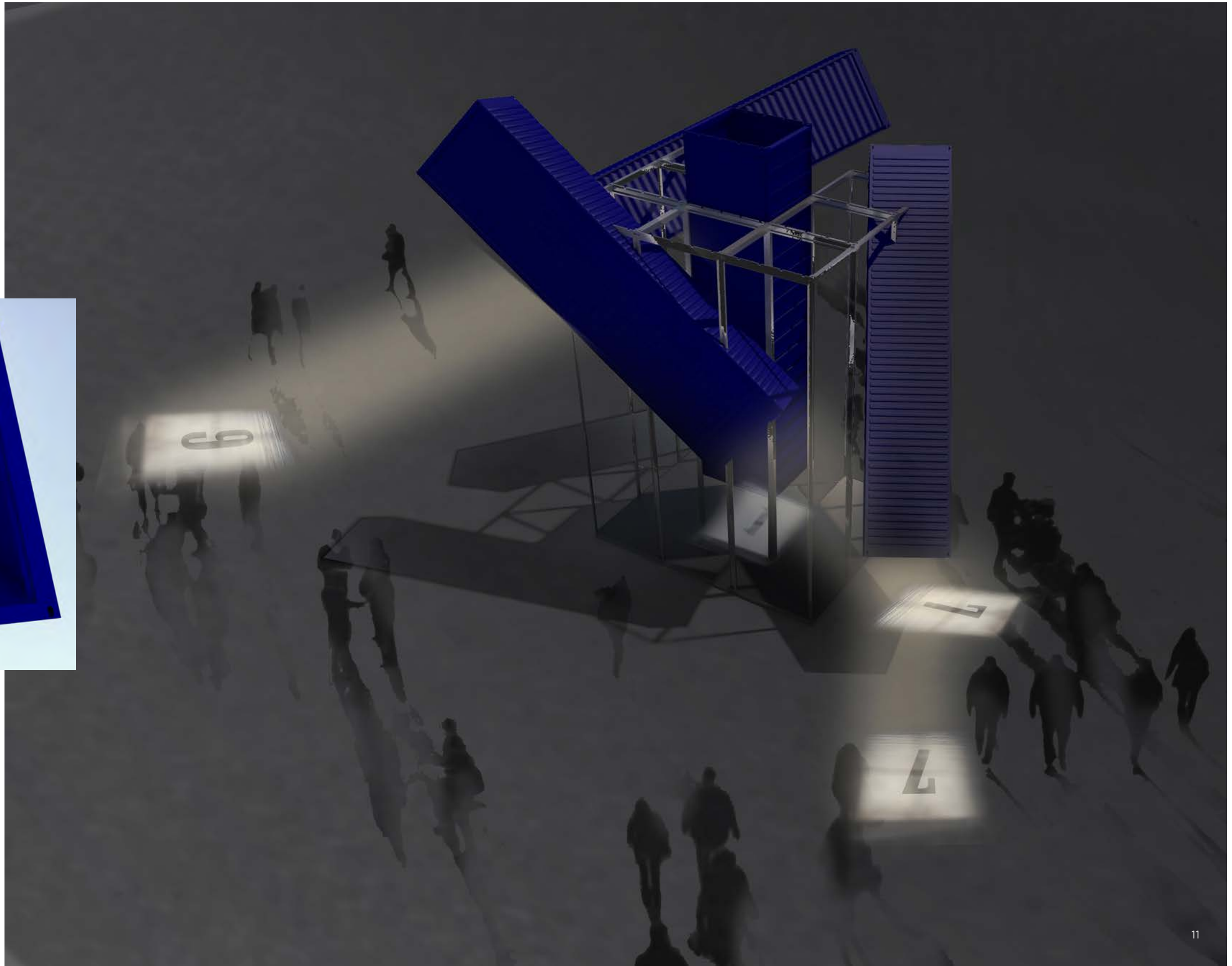
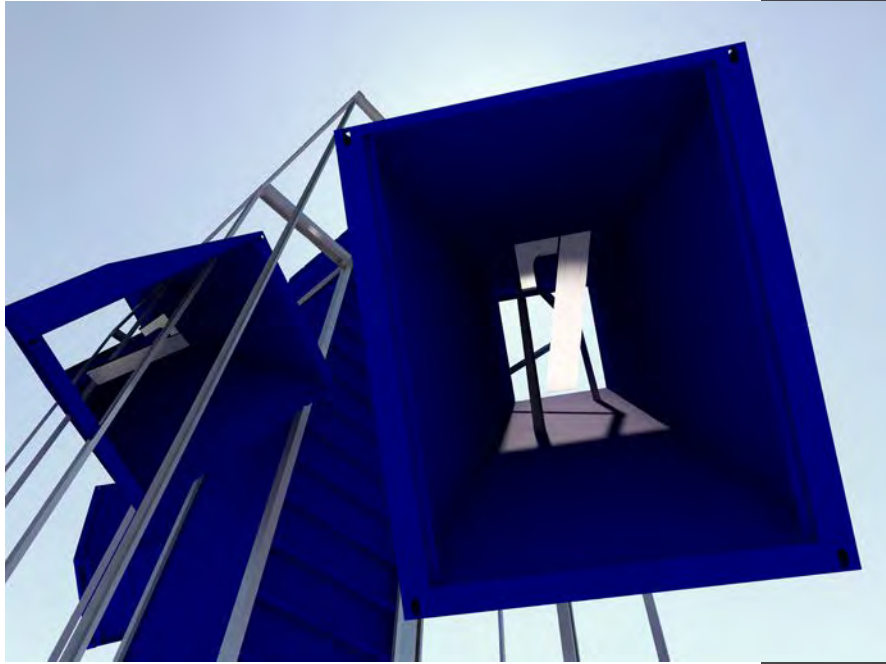
SHEET No.

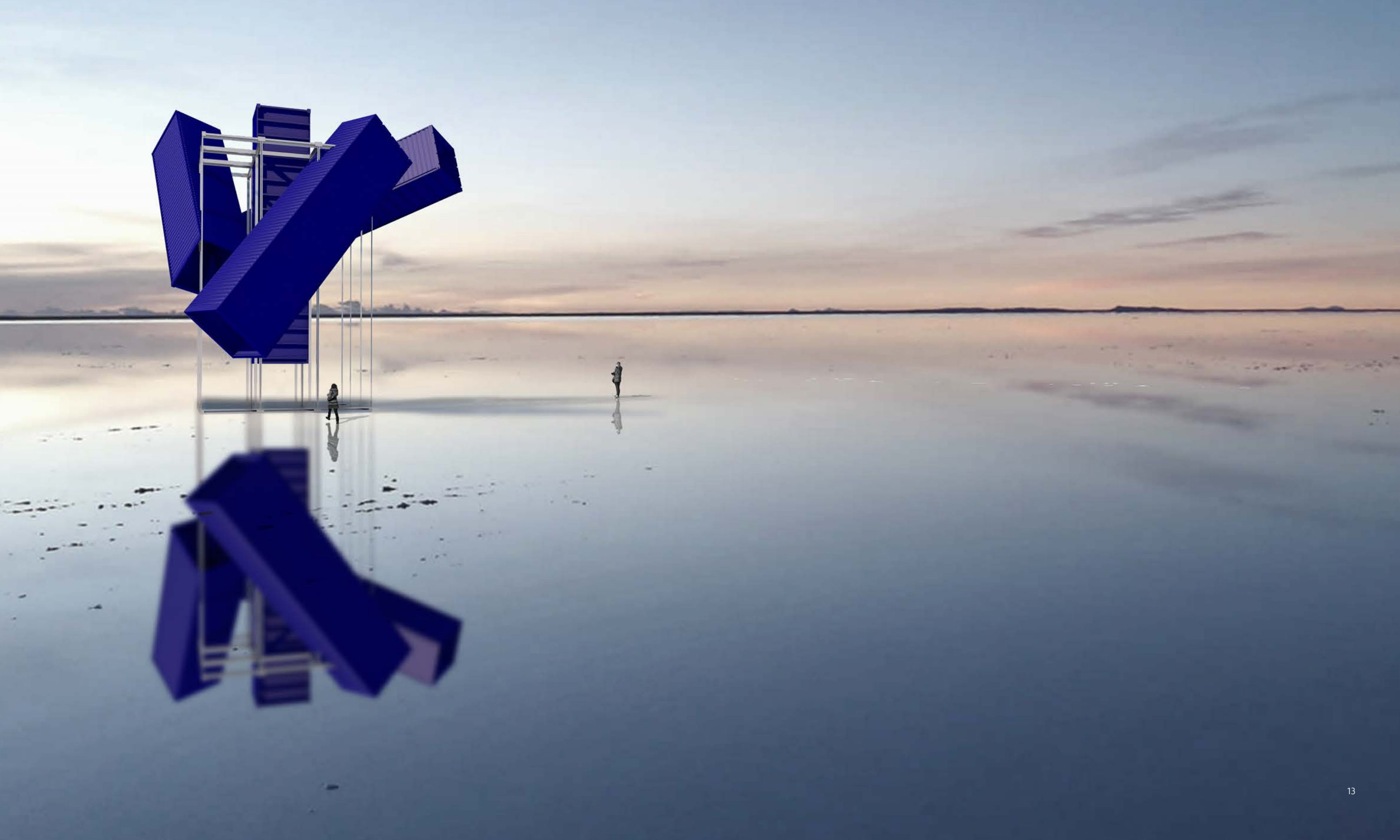
A-2.0



① 3D MODEL











ONE WAY

PNC

KMK Lease

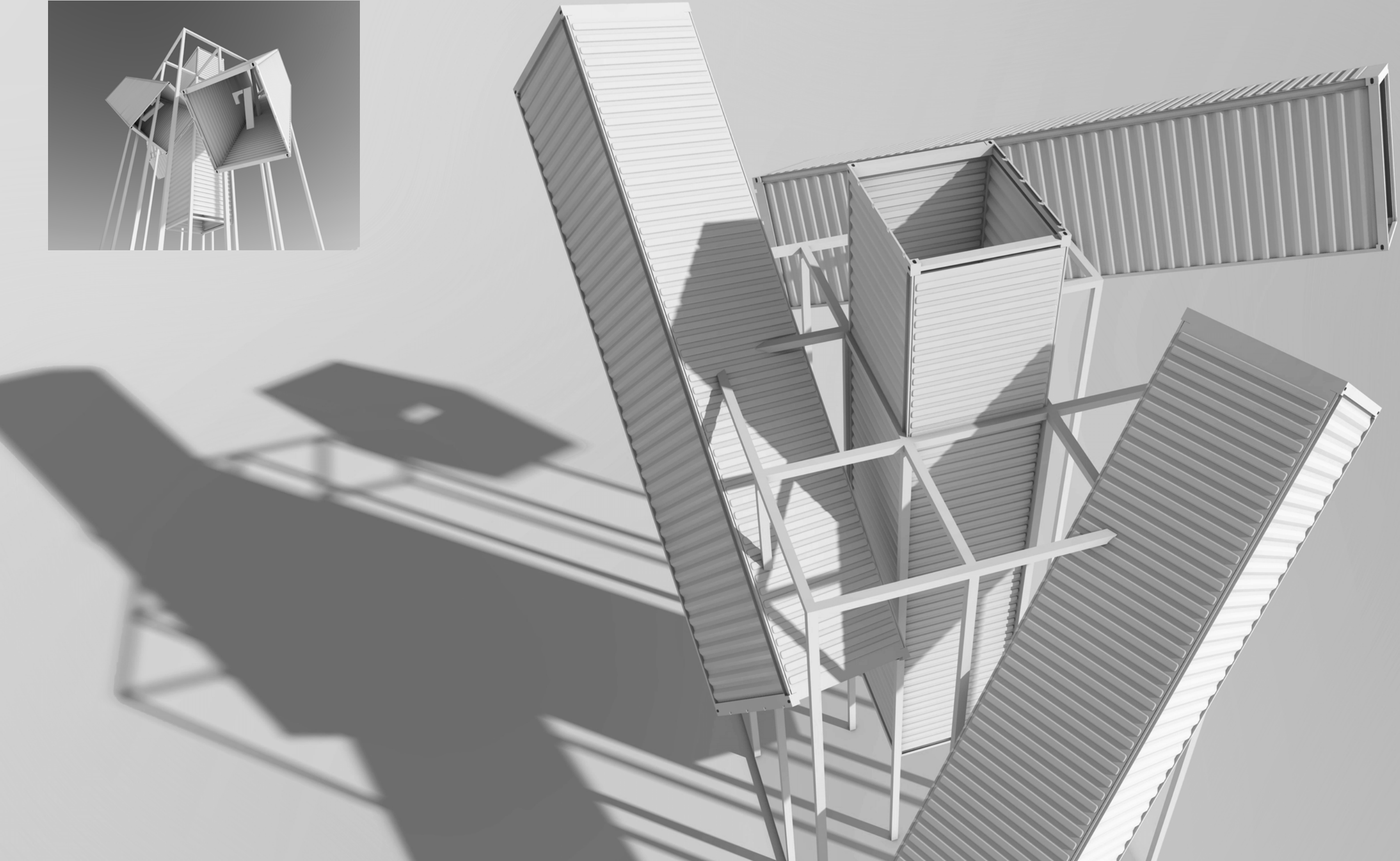
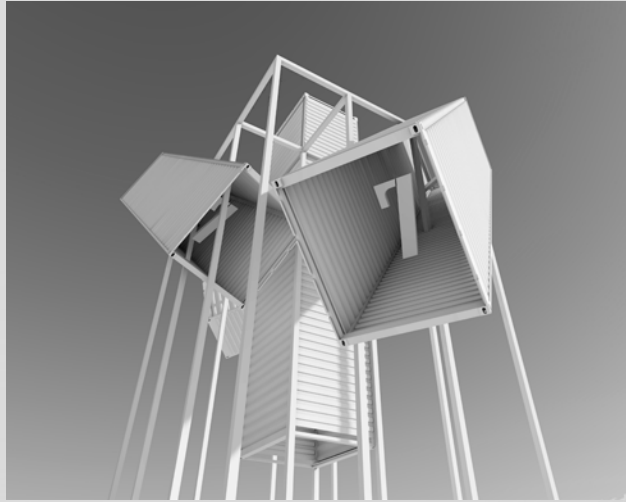
usbank

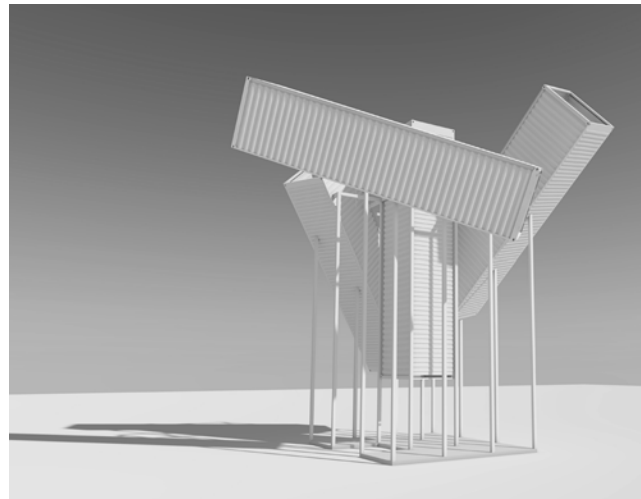
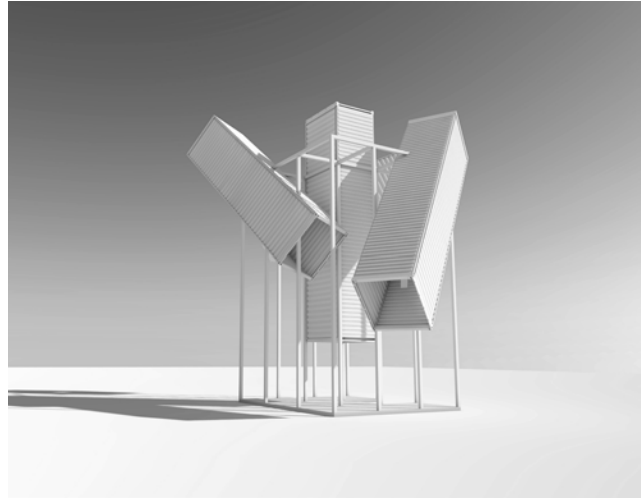
ONE WAY

DO NOT ENTER

NO TURN ON RED







Copyright © 2021 Namma & Containers, LLC

