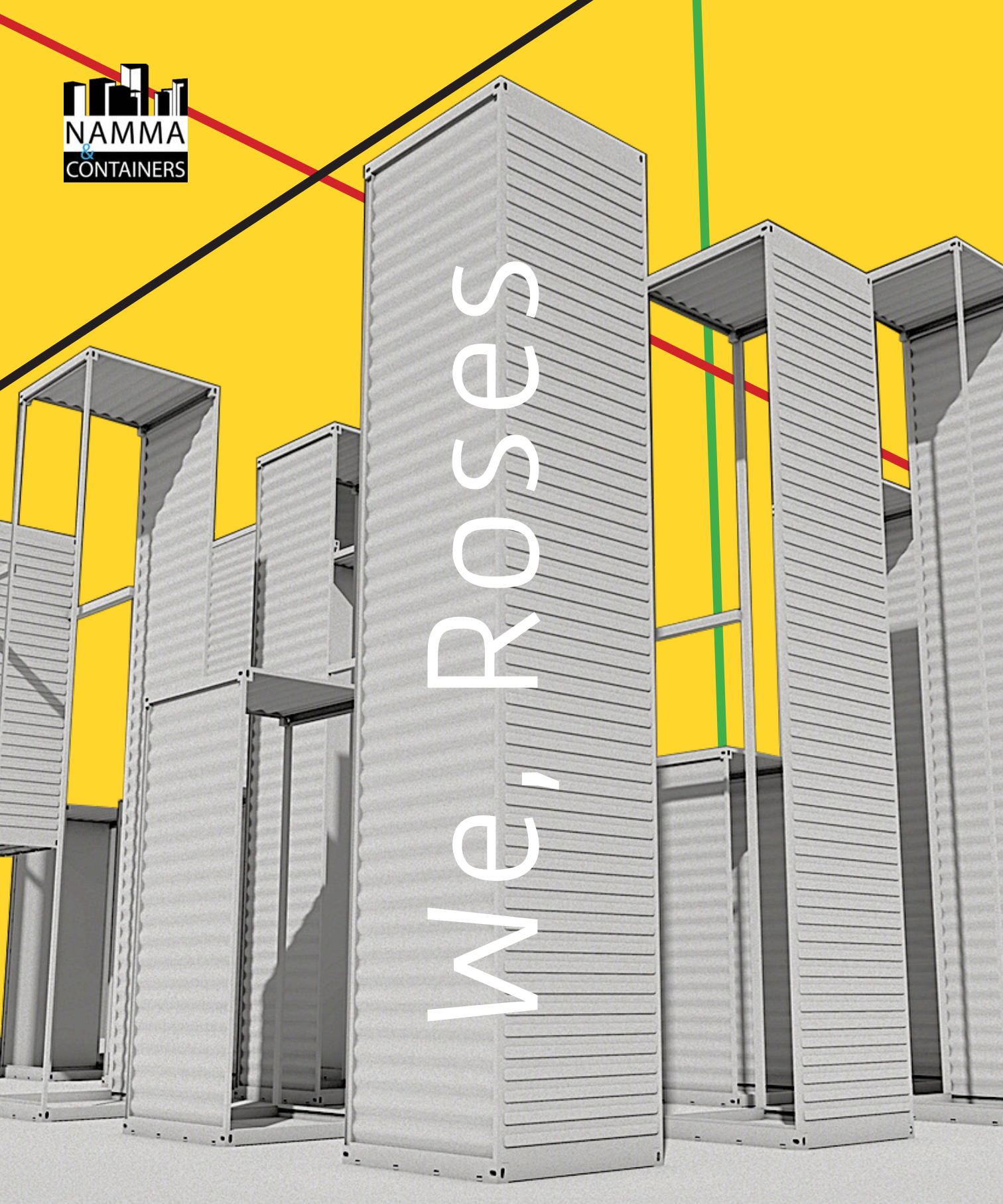




We, ROSES



JUNETEENTH

2022

Claude Yacoub & Nivine Ibeche
Architects, France



Namma & Containers, LLC

1940 Fountain View Drive
PO Box 477
Houston, TX 77057, USA
+1 (346) 401 - 6427
contact@nammacontainers.com
nammacontainers.com

Yvonamor Palix
Curator of visual and performing arts

Emancipation Park

3018 Emancipation Ave, Houston, TX 77004, USA



Contents

Introduction	7
Blueprints	
Site Plan	9
Elevation / Door Details	11
3D Model	13
White Model & Site Integration	
Day & Night	15-27
Mist Cooling System	23
Claude Yacoub References	29-31

“We rose to be you, we rose to be me”

Kristina Kay

© 1996, Juneteenth.com



Living Together "Vivre-ensemble"

Dream

Human Rights

Freedom Day

Jubilee Day

Justice

Totems

Act



Creole

Diversity

Education

Collective Creation

Memory

Futur

Legacy

Equality

Ephemeral

Art

For the **Emancipation Park 150th anniversary celebration in 2022**, we propose to create an ephemeral artistic structure commemorating the oldest park of Houston and the State of Texas. Our ambition is to work with Emancipation Park Conservancy and the City of Houston to **inaugurate this event on June 19th, 2022** (first time federal holiday): Freedom Day, Emancipation Day, and Jubilee Day.

Artistic totems will be installed on the "Event lawn", to honor the history of this park created by the reverend Jack Yates and his followers.

Today, and more than ever, this park has a strong symbolic and functional impact in the Houston's South Central neighborhood, its vicinity, and much further. Therefore, we are suggesting this ephemeral artwork that will contribute in creating an enriching dialogs between communities.

On a checkerboard of twenty tiles, 5 x 4, north-south and east-west; 19 containers of 20' and 40' are vertically set or suspended. The 20th has no volume with just a commemorative place on the ground. The exterior walls of the containers are in an anthracite grey color.

A selection of Houston's Street Artists will ornate the interior walls. These artists will be invited to work with children and youth from the community on the following themes: **Living Together, Equality, Justice, Education and Diversity.**

Some containers, opened and closed, will include portraits and videos of people who will share their stories and testimonies about the history of the park.

In addition, we plan to install a mist cooling system to make the visit more pleasant during the warmer weather and an inspired lighting system will be programmed to enhance the installation and make it more secure at night.

This **ephemeral installation** will be available in Emancipation Park for a duration of **6 to 12 months** (when done, containers will be recycled into another permanent artistic work for a different location).

Through out the period of the installation we will propose an enriching program for families and community members. We will include performing arts such as music and dance performances, as well as workshops, poetry readings/writing, etc.

**Together.
We, Roses.**

Claude Yacoub
Houston, September 7, 2021



1940 Fountain View Dr. #477
Houston, TX 77057, USA
+1 (346) 401-6427
contact@nammacontainers.com
www.nammacontainers.com

PROJECT:

#009
EMANCIPATION
PARK
INSTALLATION

REVISIONS

Number	Date

DESIGN & CONSTRUCTION DOCUMENTS:
THESE DRAWINGS, SPECIFICATIONS, DESIGNS, AND ARRANGEMENTS REPRESENTED THEREBY ARE AND SHALL REMAIN THE PROPERTY OF "Namma & Containers, LLC". NO PART THEREOF SHALL BE COPIED, DISCLOSED TO OTHERS OR USED IN CONNECTION WITH ANY WORK OR PROJECT OR BY ANY OTHER PERSON FOR ANY PURPOSE OTHER THAN THE SPECIFIC PROJECT FOR WHICH THEY HAVE BEEN PREPARED AND DEVELOPED WITHOUT WRITTEN CONSENT OF "Namma & Containers, LLC". VISUAL CONTACT WITH THESE DRAWINGS OR SPECIFICATIONS SHALL CONSTITUTE CONCLUSIVE EVIDENCE OF ACCEPTANCE OF THESE RESTRICTIONS.

NOTE:

BEFORE PROCEEDING WITH ANY WORK OR ORDER ANY MATERIALS BUILDER AND/OR OWNER SHALL VERIFY ALL DIMENSIONS AND LOCATIONS OF MATERIALS AND THEIR INTERRELATIONSHIP AT THE BUILDING SITE AND SHALL BE RESPONSIBLE FOR THEIR CORRECTNESS.

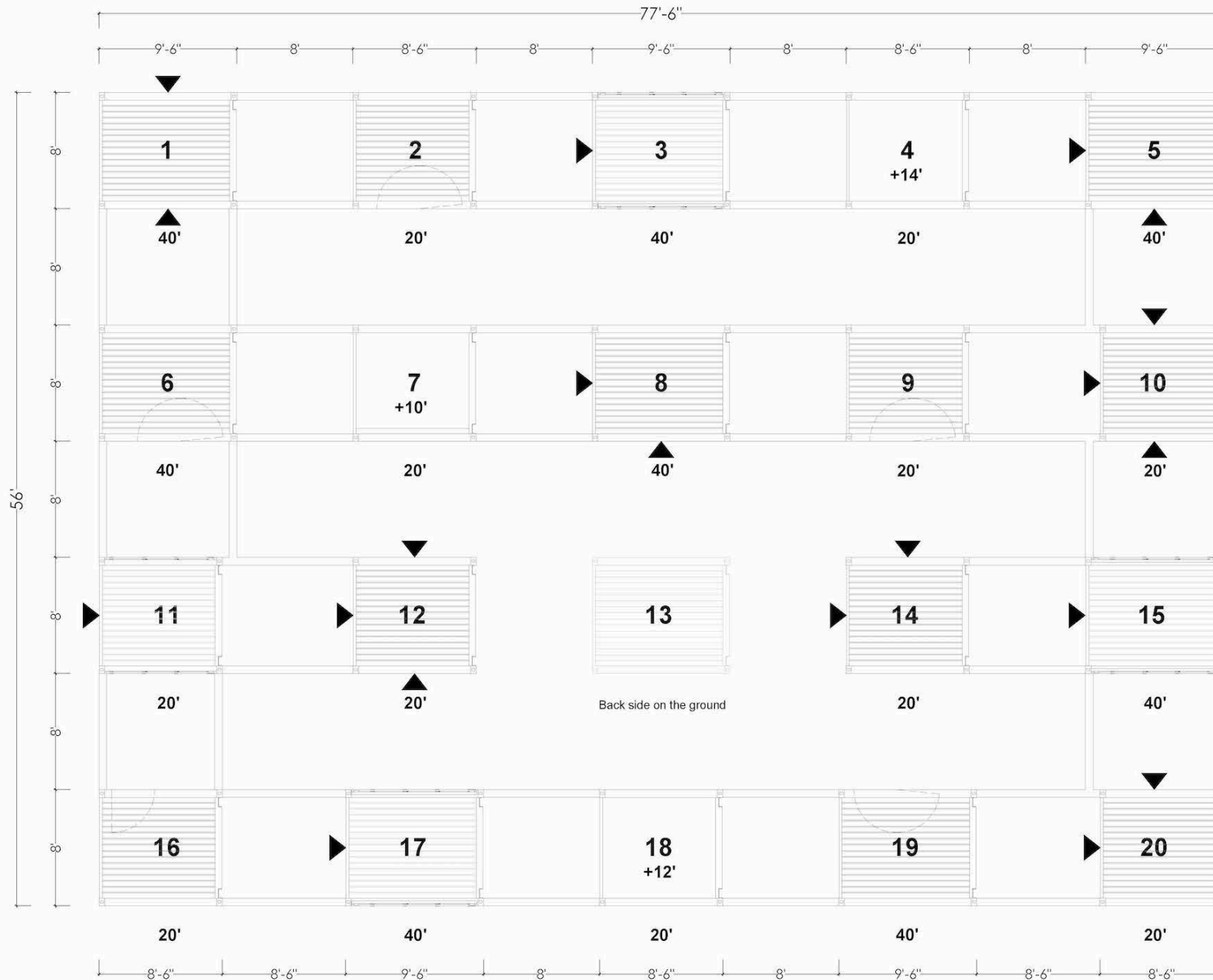
DATE: 8/12/2021

DRAWN: SR APPR: CY

SITE PLAN

SHEET No.

A-5.0



▲ Side to be removed

3 Hanging Containers (20' x3): 4 - 7 -18
Front (Doors) and Rear Elevations to be removed.

4 Containers - Open Doors to the Sky (40' x3 - 20' x1): 3 - 11 - 15 - 17.
Rear Elevations on the Ground - Front Elevations to the Sky.

4 Closed Containers - Audiovisual Projections (40' x2 - 20' x2): 2 - 6 - 9 - 19.
Front Elevations on the Ground (Doors to be removed).

7 Street Art (40' x3 - 20' x4): 1 - 5 - 8 - 10 - 12 - 14 - 20.
Front Elevation on the Ground (Doors to be removed).

1 Container Closed - Technical /Storage (20'): 16.
Front Elevation on the Ground (Doors to be removed).

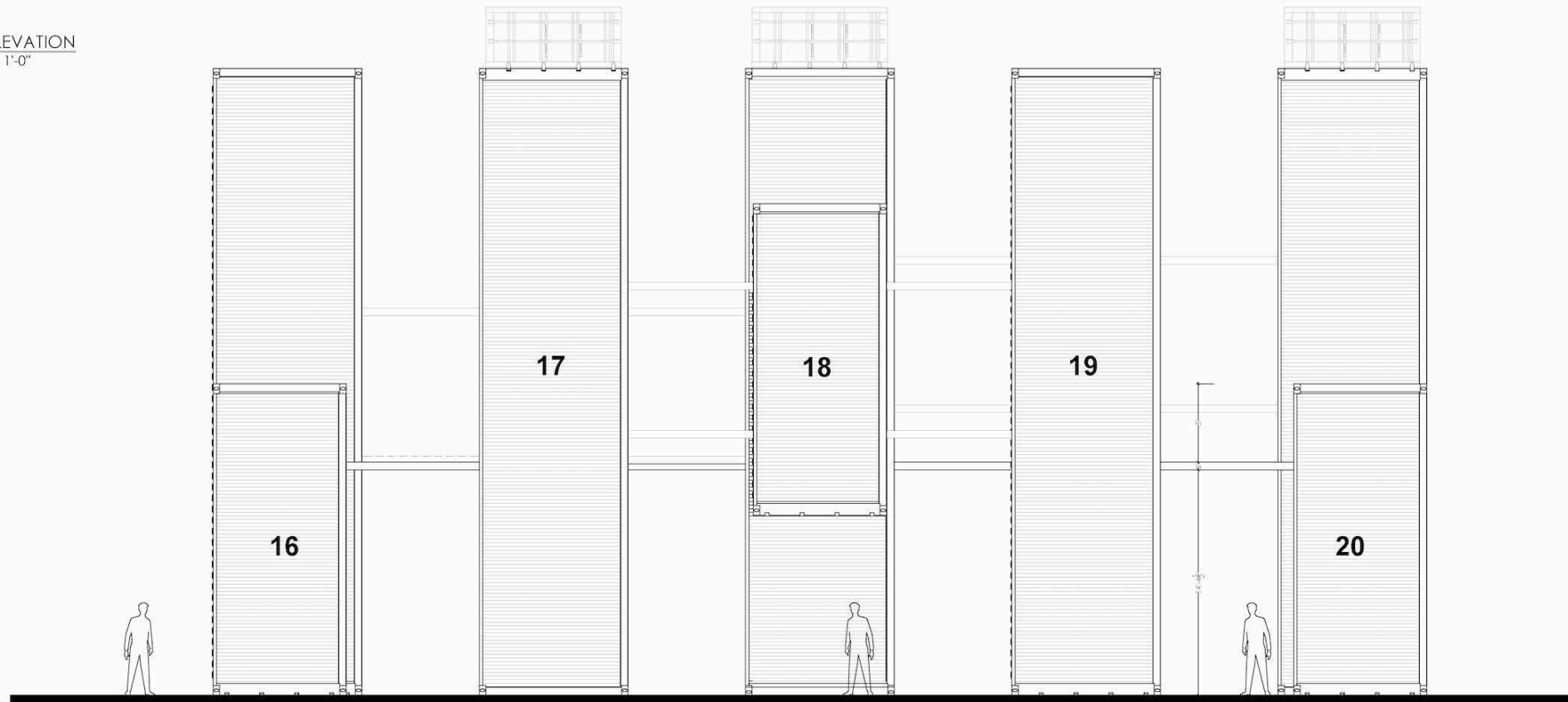
Total: 19 Containers + 1 Rear Elevation on the ground: 13.



1 SITE PLAN
SCALE: 1/4"= 1'-0"

“Already a people, our faces ebon, our bodies lean”

1 SOUTH ELEVATION
SCALE: 1/4"= 1'-0"



1940 Fountain View Dr. #477
Houston, TX 77057, USA
+1 (346) 401-6427
contact@nammacontainers.com
www.nammacontainers.com

PROJECT:

#009
EMANCIPATION
PARK
INSTALLATION

REVISIONS

Number	Date

DESIGN & CONSTRUCTION DOCUMENTS:

THESE DRAWINGS, SPECIFICATIONS, DESIGNS, AND ARRANGEMENTS REPRESENTED THEREBY ARE AND SHALL REMAIN THE PROPERTY OF Namma & Containers, LLC. NO PART THEREOF SHALL BE COPIED, DISCLOSED TO OTHERS OR USED IN CONNECTION WITH ANY WORK OR PROJECT OR BY ANY OTHER PERSON FOR ANY PURPOSE OTHER THAN THE SPECIFIC PROJECT FOR WHICH THEY HAVE BEEN PREPARED AND DEVELOPED WITHOUT WRITTEN CONSENT OF Namma & Containers, LLC. VISUAL CONTACT WITH THESE DRAWINGS OR SPECIFICATIONS SHALL CONSTITUTE CONCLUSIVE EVIDENCE OF ACCEPTANCE OF THESE RESTRICTIONS.

NOTE:

BEFORE PROCEEDING WITH ANY WORK OR ORDER ANY MATERIALS BUILDER AND/OR OWNER SHALL VERIFY ALL DIMENSIONS AND LOCATIONS OF MATERIALS AND THEIR INTERRELATIONSHIP AT THE BUILDING SITE, AND SHALL BE RESPONSIBLE FOR THEIR CORRECTNESS.

DATE: 8/12/2021

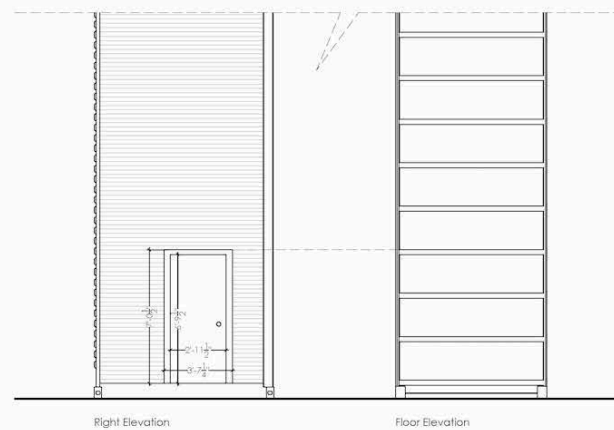
DRAWN: SR APPR: CY

Elevations
Door Details

SHEET No.

A-6.0

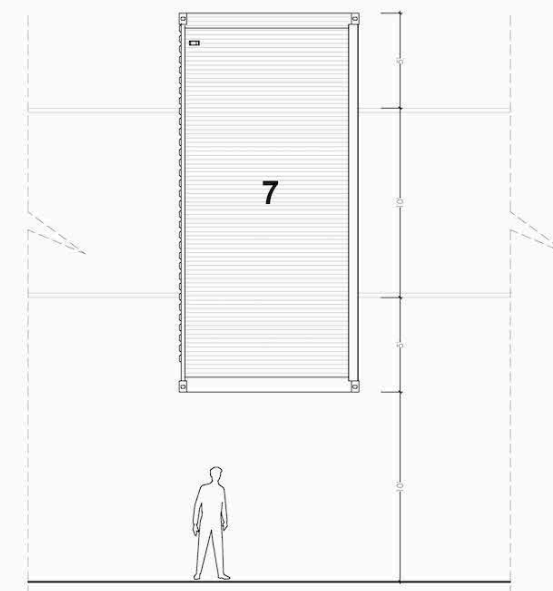
2 DOOR DETAILS - CONTAINERS 2, 6, 9, 16, 19
SCALE: 1/4"= 1'-0"



3 HANGING CONTAINERS
SCALE: 1/4"= 1'-0"

CONTAINERS LEVELS:

- 4: +14'
- 7: +10'
- 18: +12'





1940 Fountain View Dr. #477
Houston, TX 77057, USA
+1 (346) 401-6427
contact@nammacontainers.com
www.nammacontainers.com

PROJECT:

#009
EMANCIPATION
PARK
INSTALLATION

REVISIONS

Number	Date

DESIGN & CONSTRUCTION DOCUMENTS:

THESE DRAWINGS, SPECIFICATIONS, DESIGNS, AND ARRANGEMENTS REPRESENTED THEREBY ARE AND SHALL REMAIN THE PROPERTY OF "Namma & Containers, LLC". NO PART THEREOF SHALL BE COPIED, DISCLOSED TO OTHERS OR USED IN CONNECTION WITH ANY WORK OR PROJECT OR BY ANY OTHER PERSON FOR ANY PURPOSE OTHER THAN THE SPECIFIC PROJECT FOR WHICH THEY HAVE BEEN PREPARED AND DEVELOPED WITHOUT WRITTEN CONSENT OF "Namma & Containers, LLC". VISUAL CONTACT WITH THESE DRAWINGS OR SPECIFICATIONS SHALL CONSTITUTE CONCLUSIVE EVIDENCE OF ACCEPTANCE OF THESE RESTRICTIONS.

NOTE:

BEFORE PROCEEDING WITH ANY WORK OR ORDER ANY MATERIALS BUILDER AND/OR OWNER SHALL VERIFY ALL DIMENSIONS AND LOCATIONS OF MATERIALS AND THEIR INTERRELATIONSHIP AT THE BUILDING SITE AND SHALL BE RESPONSIBLE FOR THEIR CORRECTNESS.

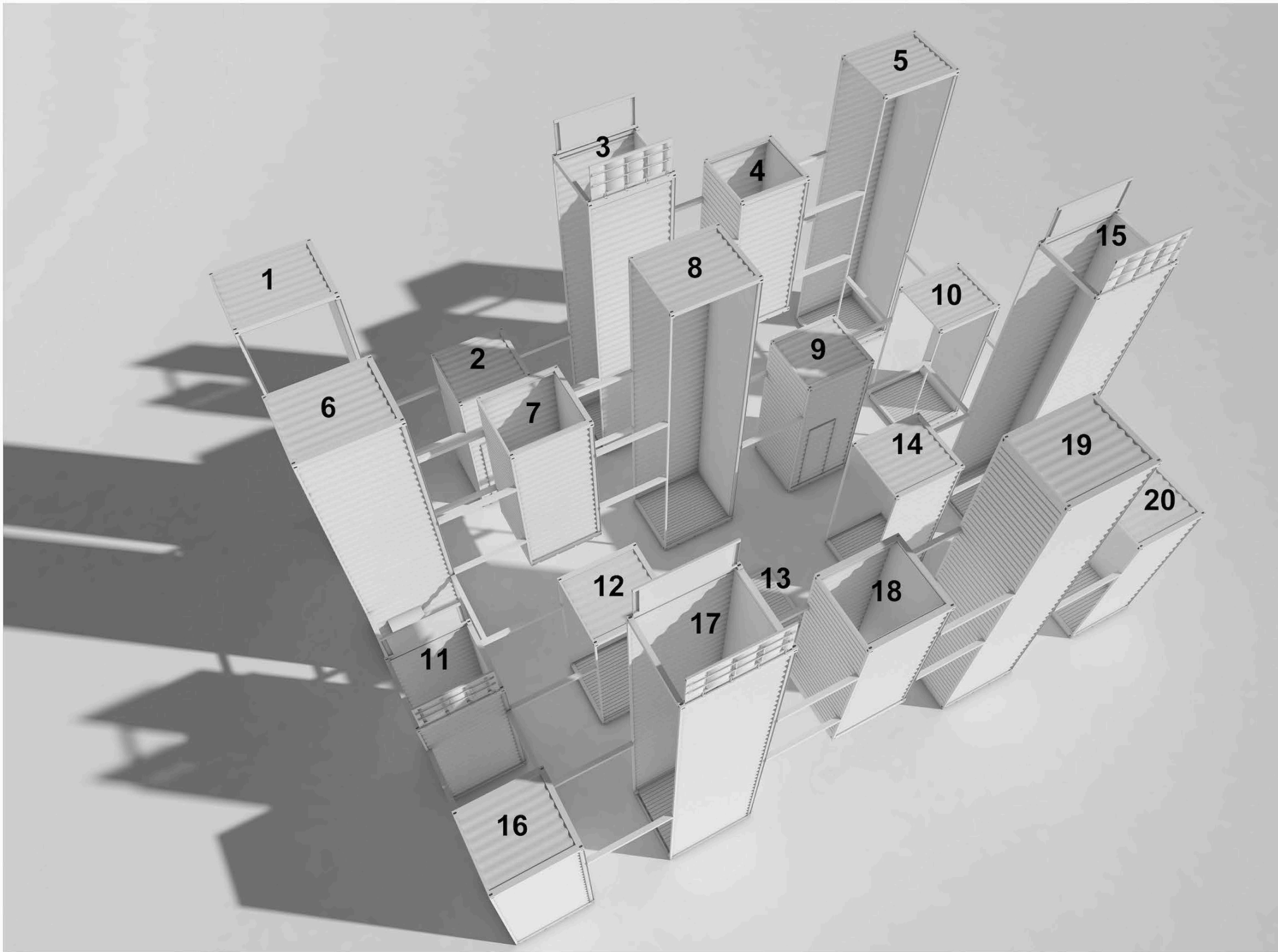
DATE: 8/12/2021

DRAWN: SR	APPR: CY
--------------	-------------

3D MODEL

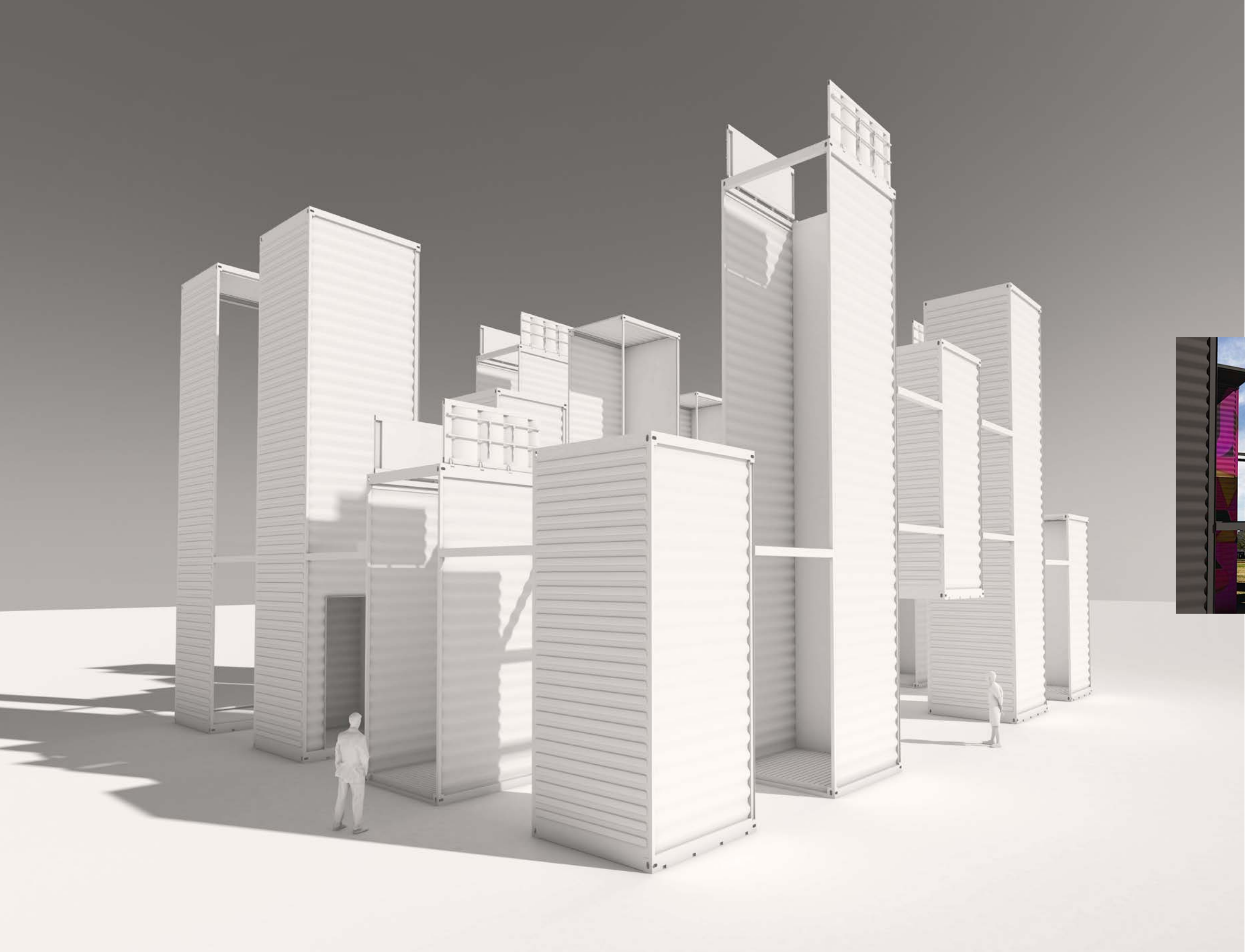
SHEET No.

A-7.0



① 3D MODEL

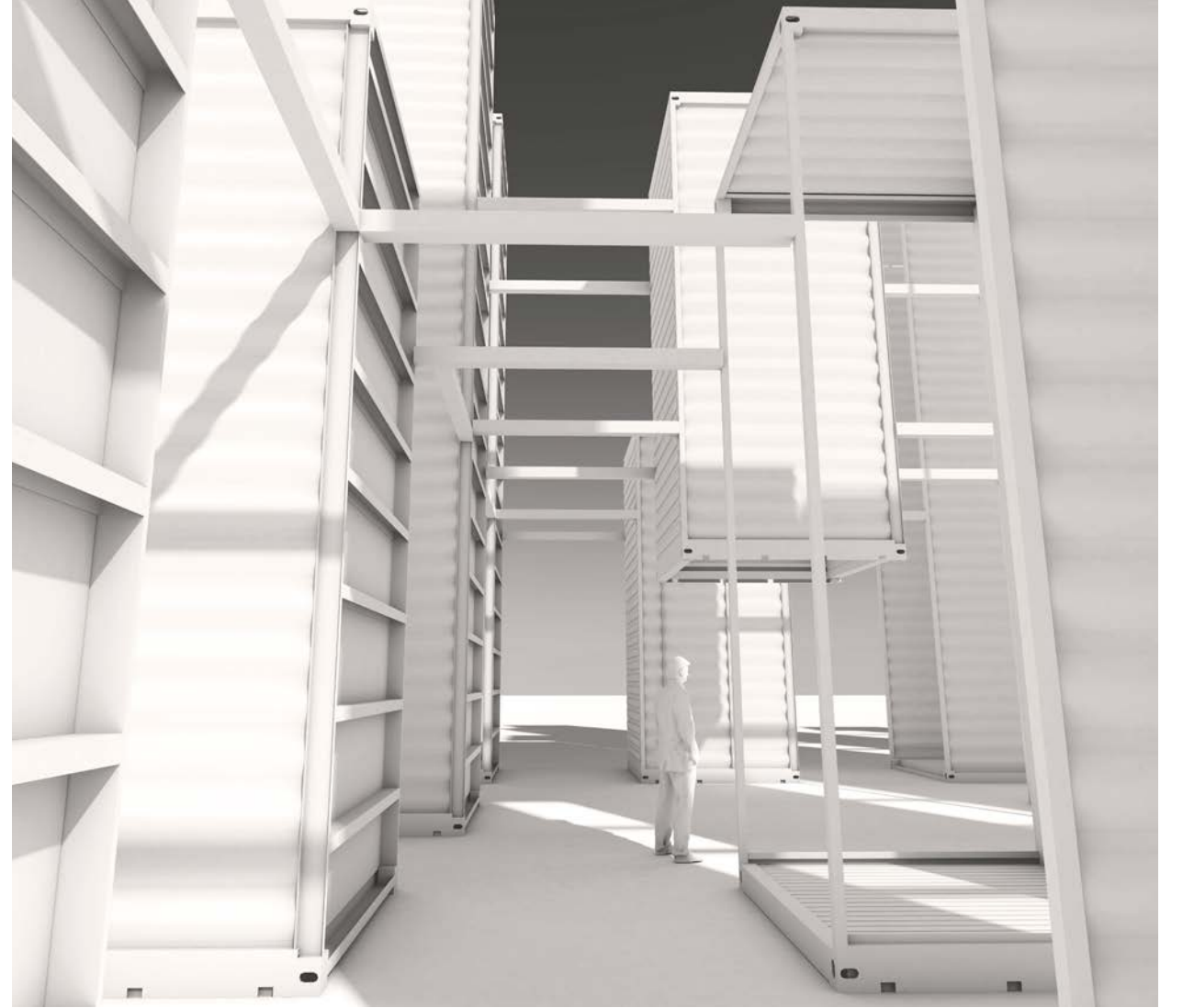
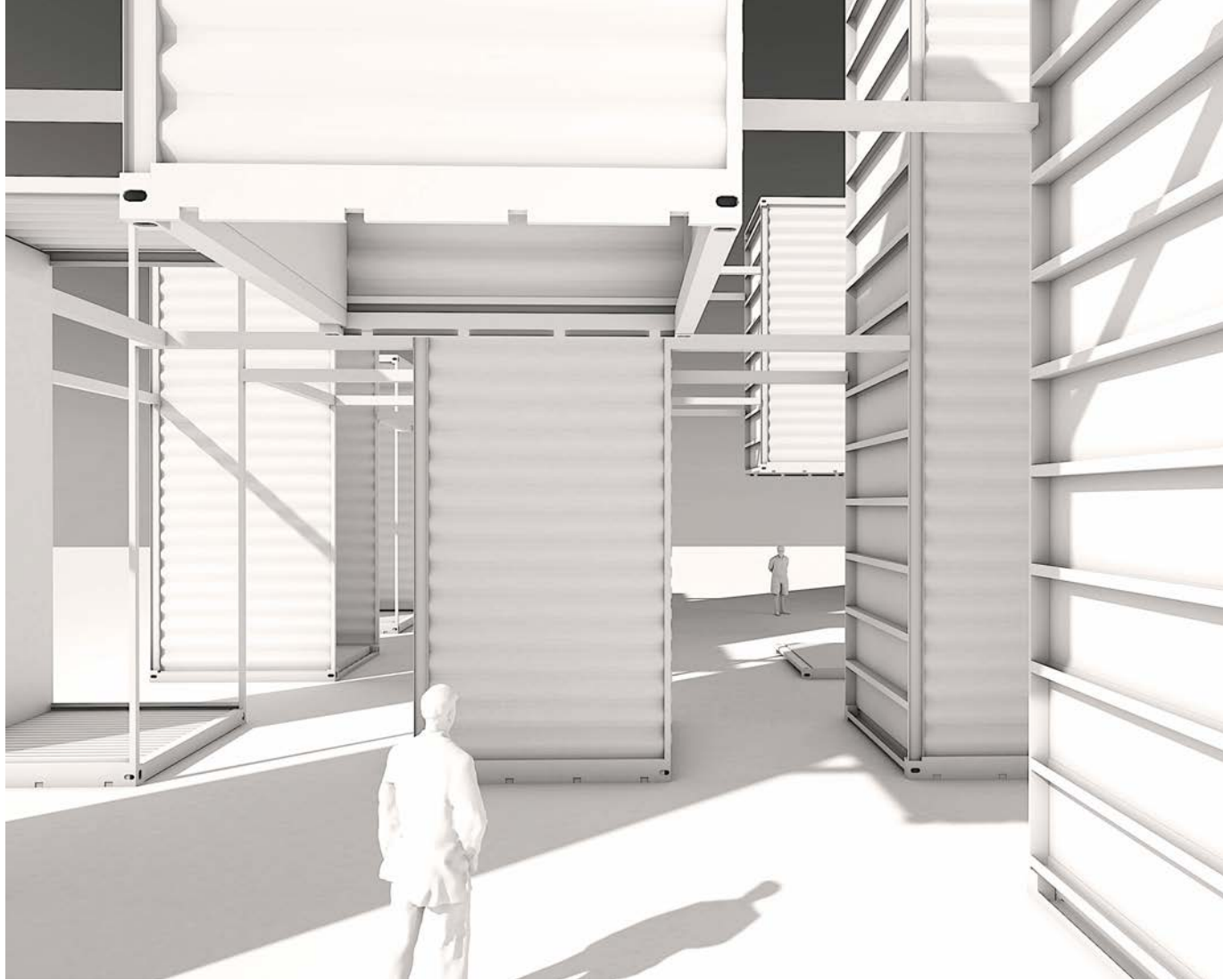
“Crushed by forces we knew nothing of, we rose”



“Above everything expected, we rose”





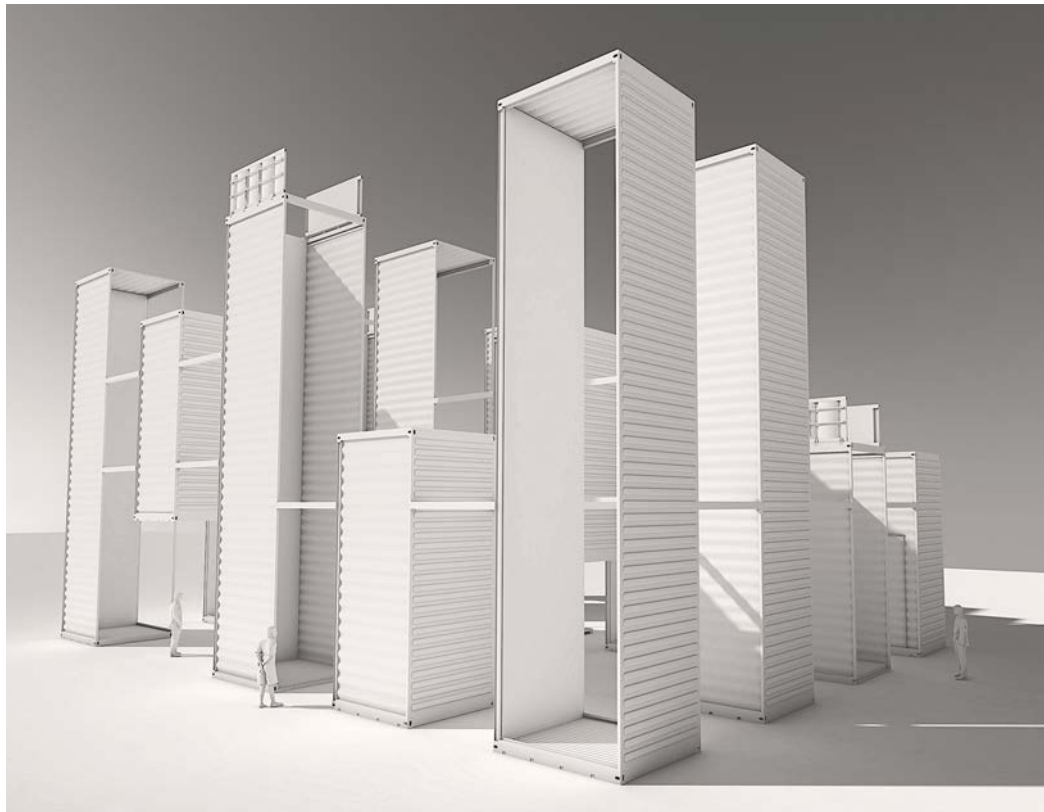


“To become the knowledge we never knew”





“Act We must”



“Dream, we did”



“We rose to be you, we rose to be me” / We, Roses



Claude YACOUB

Architect DESA, France

While being an architect (since 1989), university professor and researcher (since 1995), Claude Yacoub has created 5 major ephemeral installations and many other temporary artistic works of art since 1992.



“ Tomorrow, elsewhere ”

Savane’s Park, Fort-de-France, Martinique, France, 1992
Sponsors: Regional Direction of Cultural Affairs of Martinique,
Ministry of Culture & Caisse des Dépôts et Consignations



“ I’m waiting for the end of a world “

François Arago Street, Fort-de-France, Martinique, France 1996
Sponsors: Regional Direction of Cultural Affairs of Martinique,
Ministry of Culture & Caisse des Dépôts et Consignations,
Martinique General Council

“ Thirty thousand souls under the heavens “

Baie de Saint-Pierre, Martinique, France 2002
Sponsors: Saint-Pierre City, Martinique General Council,
Office of Tourism, Martinique Regional Council,
Minister for Overseas Departments and Territories,
Regional Direction of Cultural Affairs of Martinique,
Ministry of Culture

“ With Time “

Khan Assad Pacha, Damascus, Syria, 2006
Sponsors: French cultural Center,
French Embassy in Damascus & Total

“ Stars at Sea “

Sainte-Marie Islet, martinique, France, 1998
Sponsor: Sainte-Marie City

