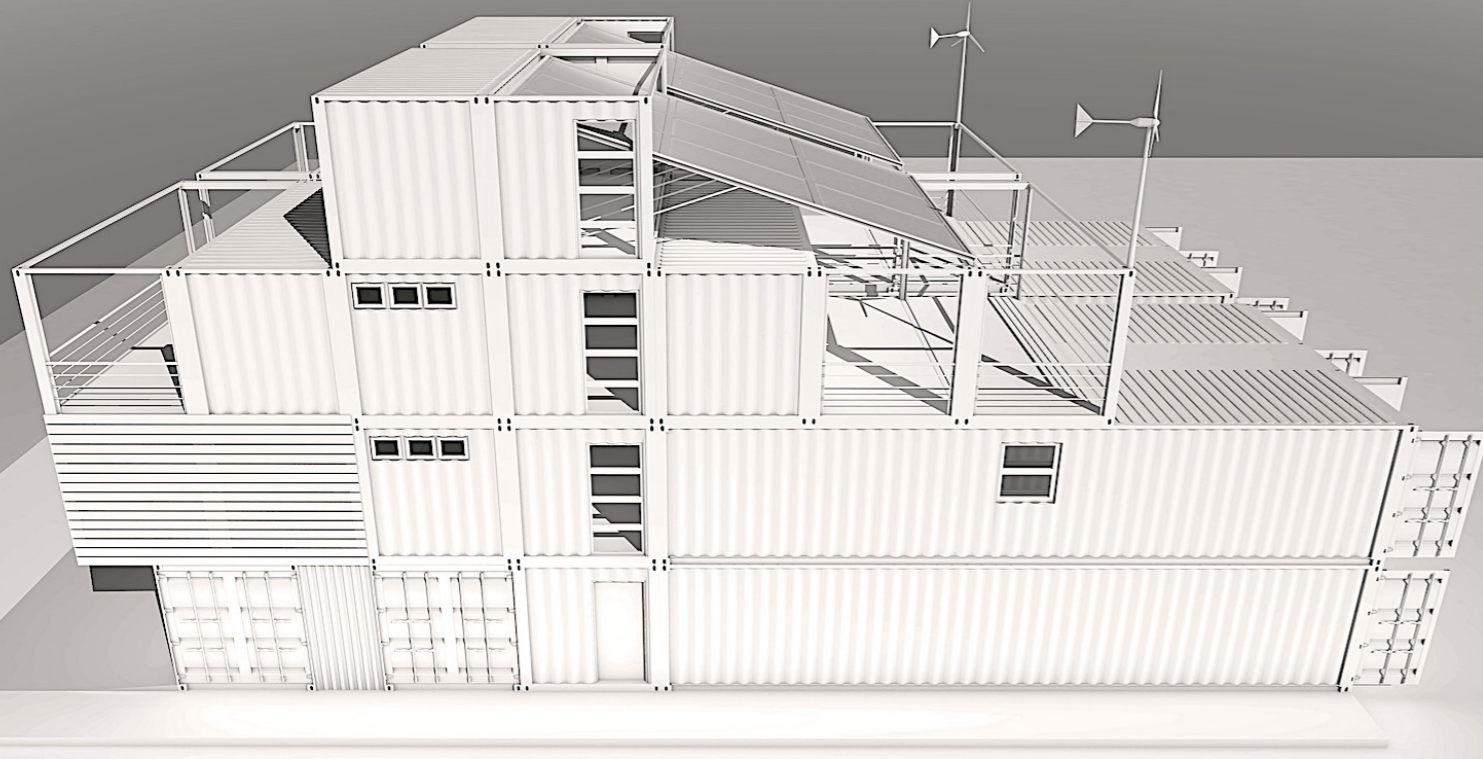
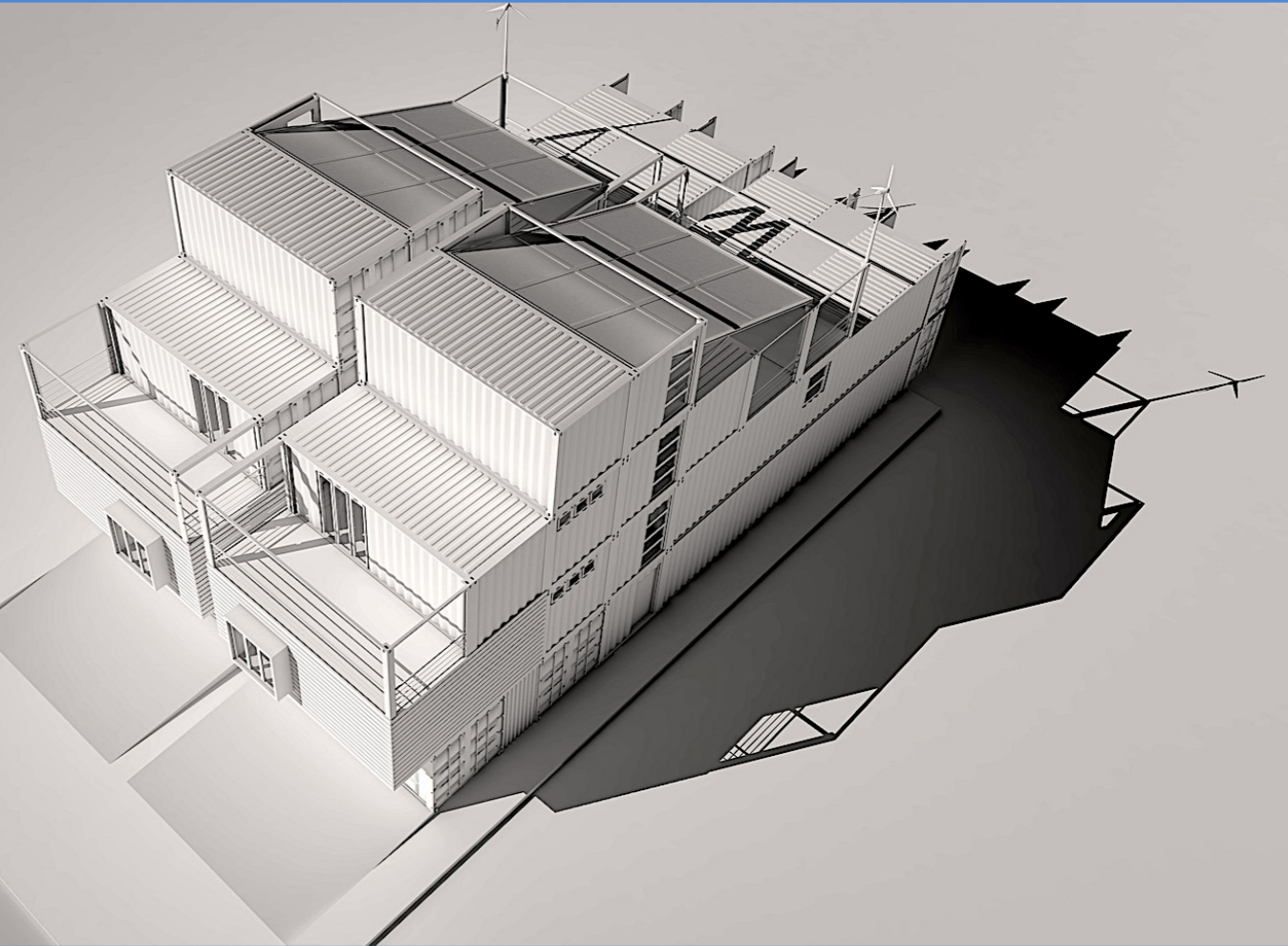




# #002 - Townhouses - T1



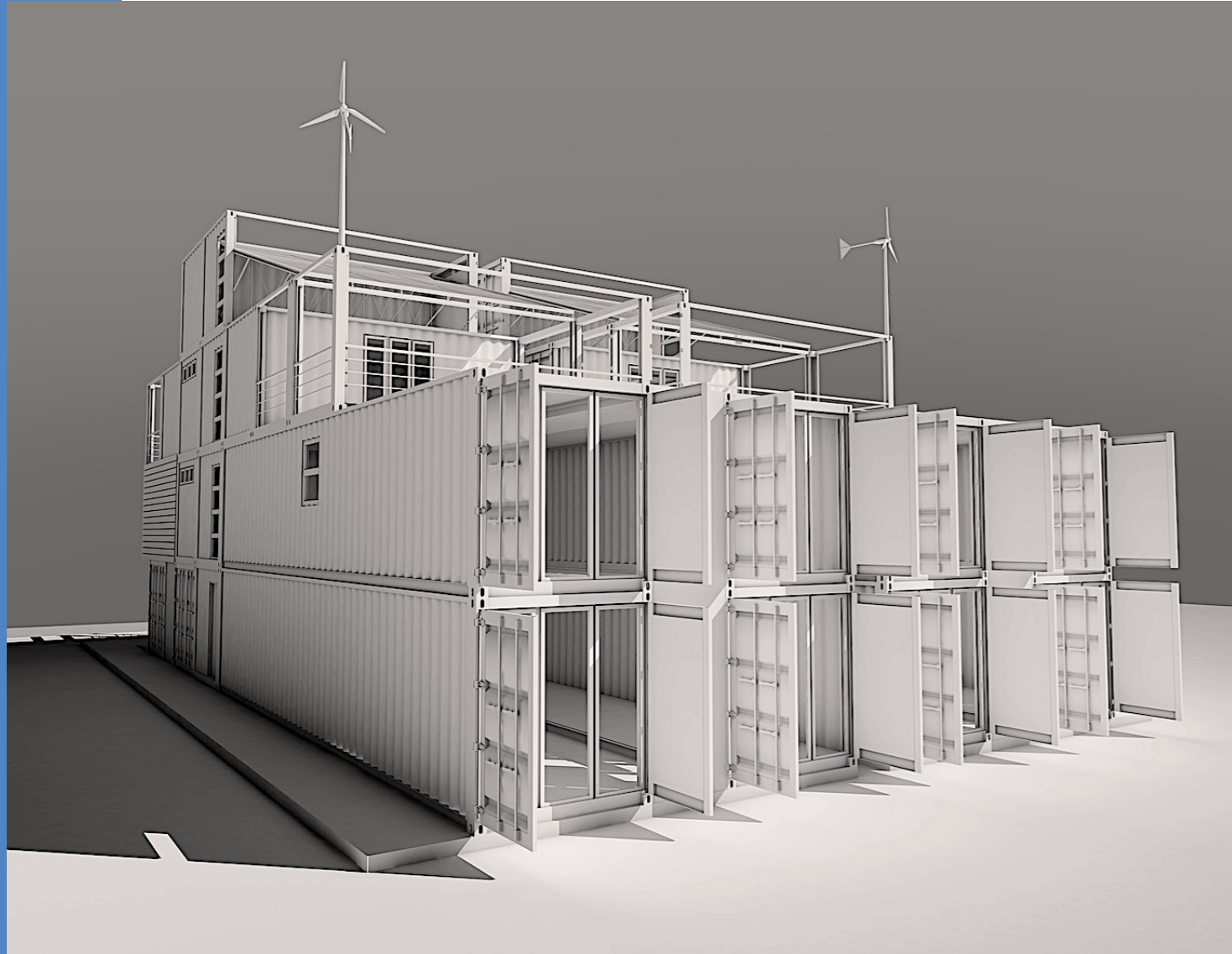
Copyright © 2021 Namma & Containers, LLC



**Namma & Containers, LLC**

1940 Fountain View Drive, PO Box 477  
Houston, TX 77057, USA  
+1 (346) 401-6427  
contact@nammacontainers.com  
nammacontainers.com





As soon as we started our business, we focused right away on Townhouses, which are increasing in demand in the neighborhoods of East Downtown and South Central, as well as in other areas such as the Heights and other parts of Houston.

The projects presented here are located mainly in South Central Houston; on plots of almost identical dimensions, with a width of 50ft on the street and a length of 100ft in depth. There are countless plots with these same dimensions, which represent an important business market.

One example is the plot located at 2704 Emancipation Ave in South Central, with two dwellings that are almost identical; only a few small nuances on the inside can distinguish one from the other.

This Townhouse - T1 - total surface area of 2,700 sq. ft. - is built on three levels with three bedrooms and three and a half bathrooms.

On the 1st level there is a recess located on the street side, allowing two cars to be parked outside. There is also a garage for two cars as well as a storage space, an entry room with a closet, a kitchen with a cellar, a dining room and a living room overseeing a 850 sq. ft backyard.

On the 2nd level, there is a master bedroom with its master bathroom and walk-in closet; a TV Room; a laundry room; a second bedroom with a bathroom and walk-in closet and two Open areas overlooking the Foyer and Living room.

On the 3rd level, there is a third bedroom with bathroom, and its walk-in closet and terrace; a Game Room which dominates a large terrace and an Open area overlooking the Foyer.

On the 4th level, two containers of 20' are dedicated for the Mechanical area with a solar panel. It covers 480 sq. ft. which allows the dwelling to be totally energetically self-reliant.



