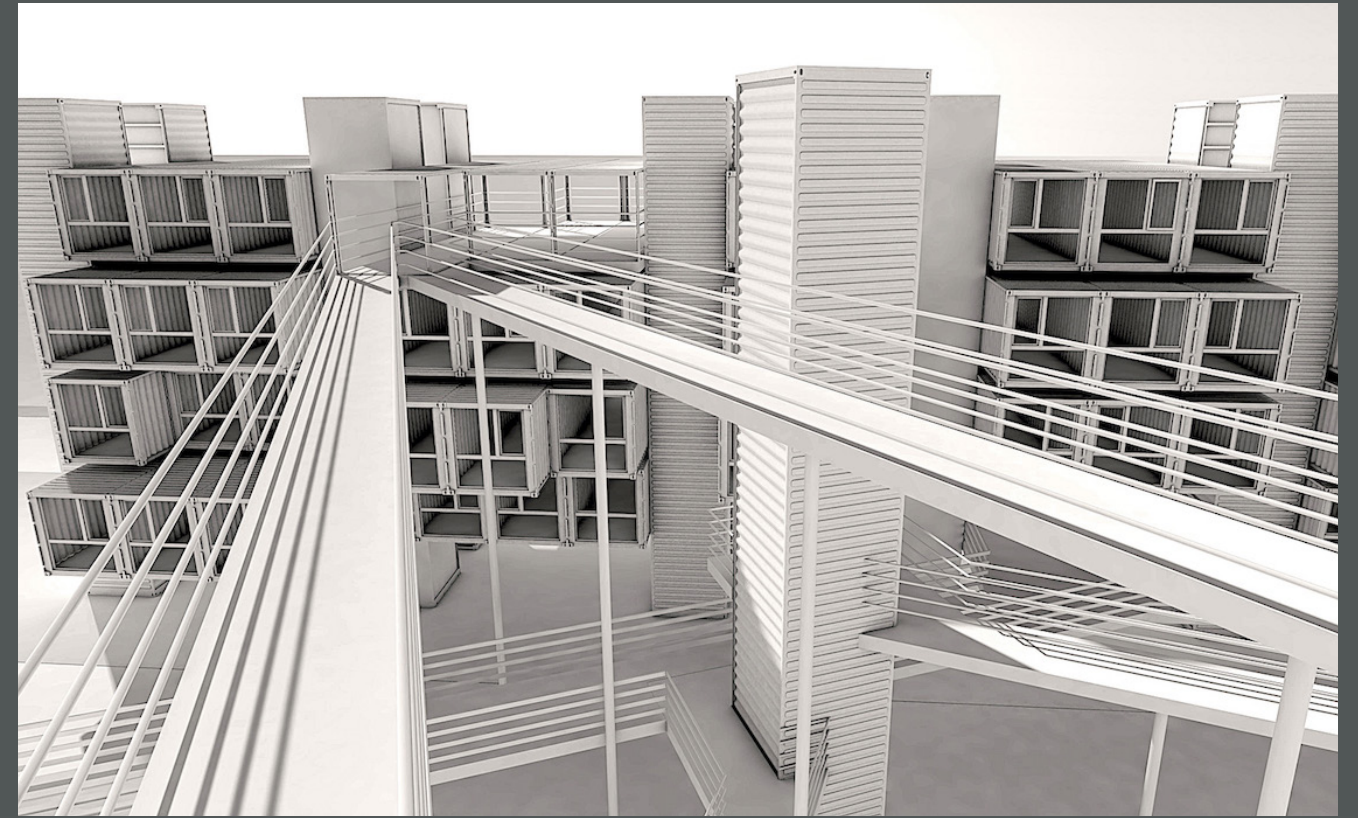
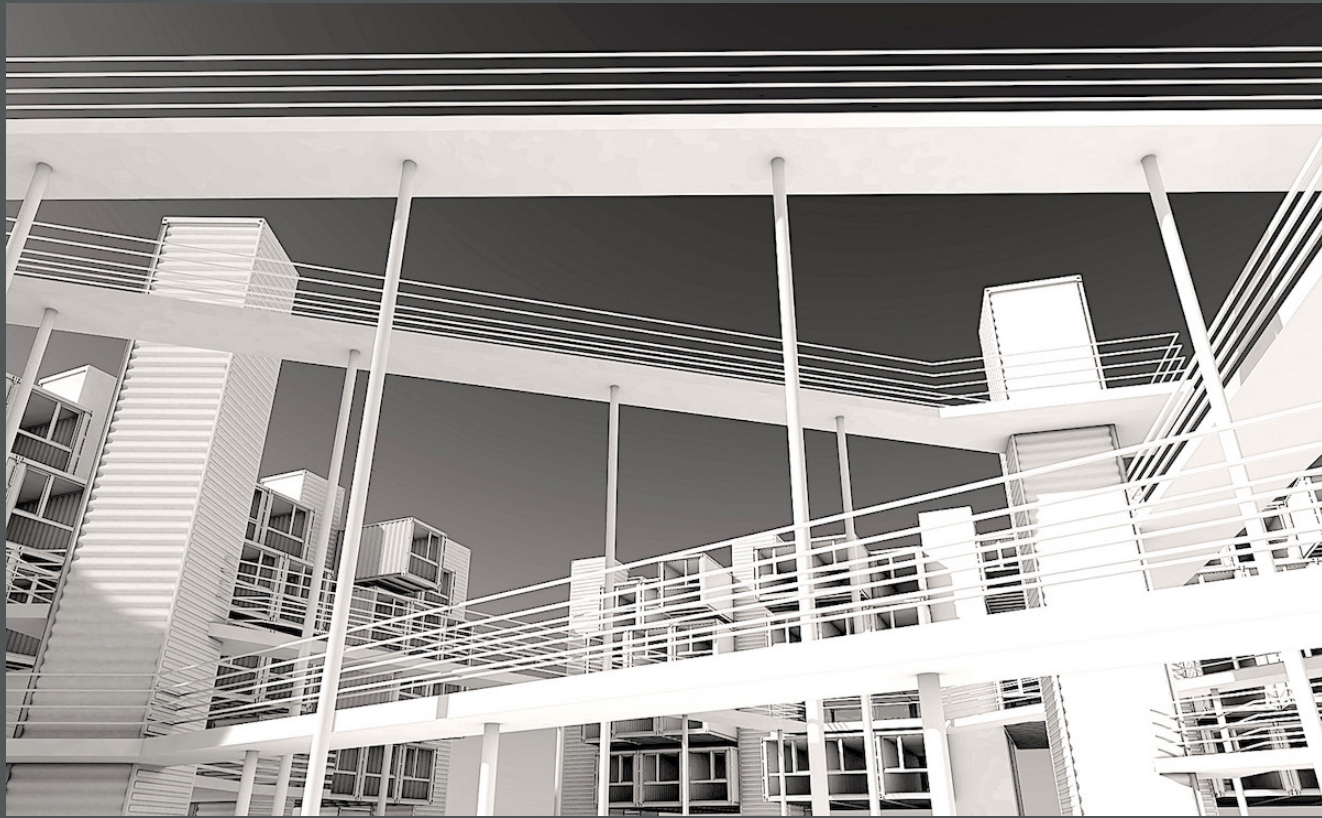




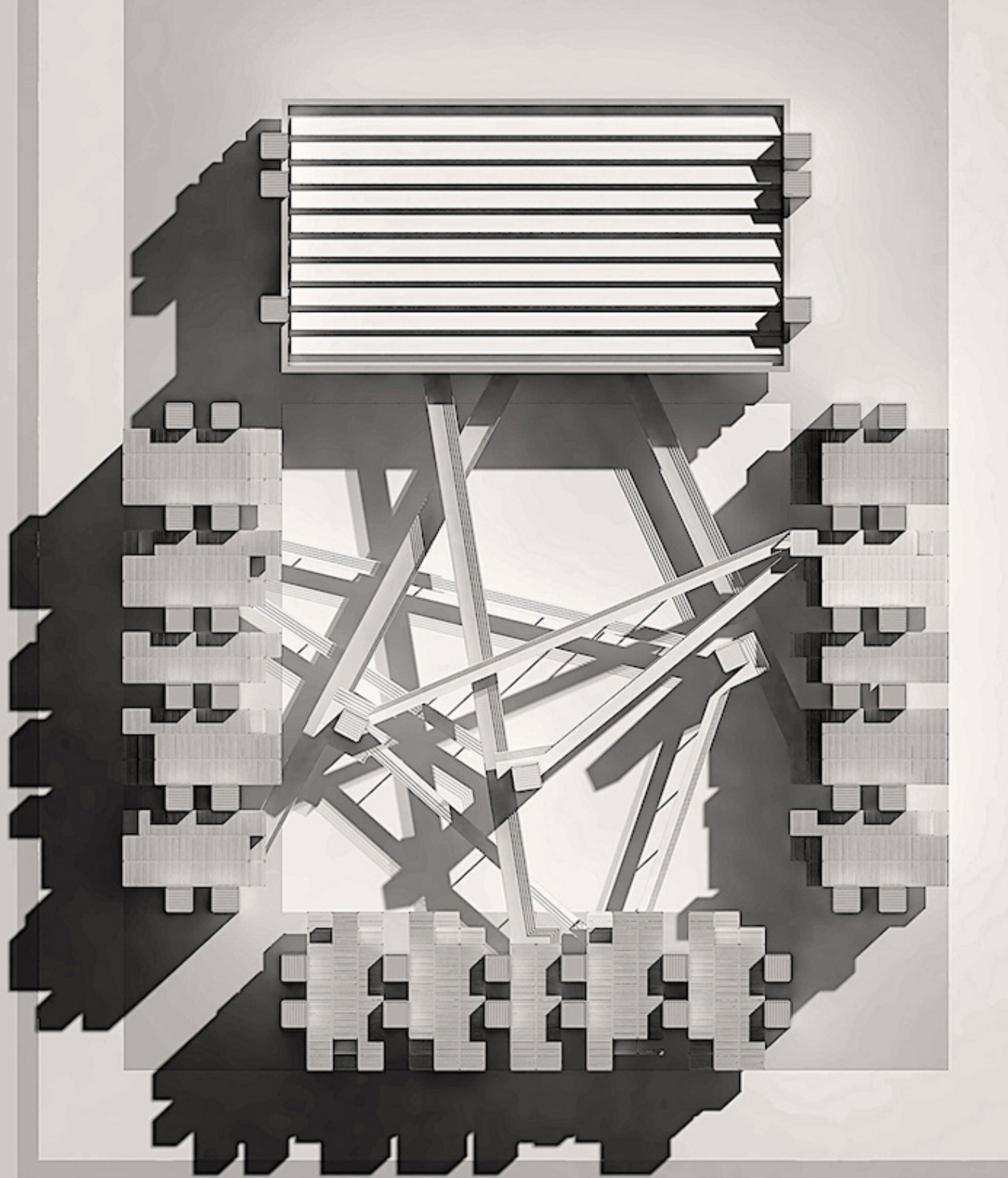
#016 - Offices



Namma & Containers, LLC

1940 Fountain View Drive, PO Box 477
Houston, TX 77057, USA
+1 (346) 401-6427
contact@nammacontainers.com
nammacontainers.com





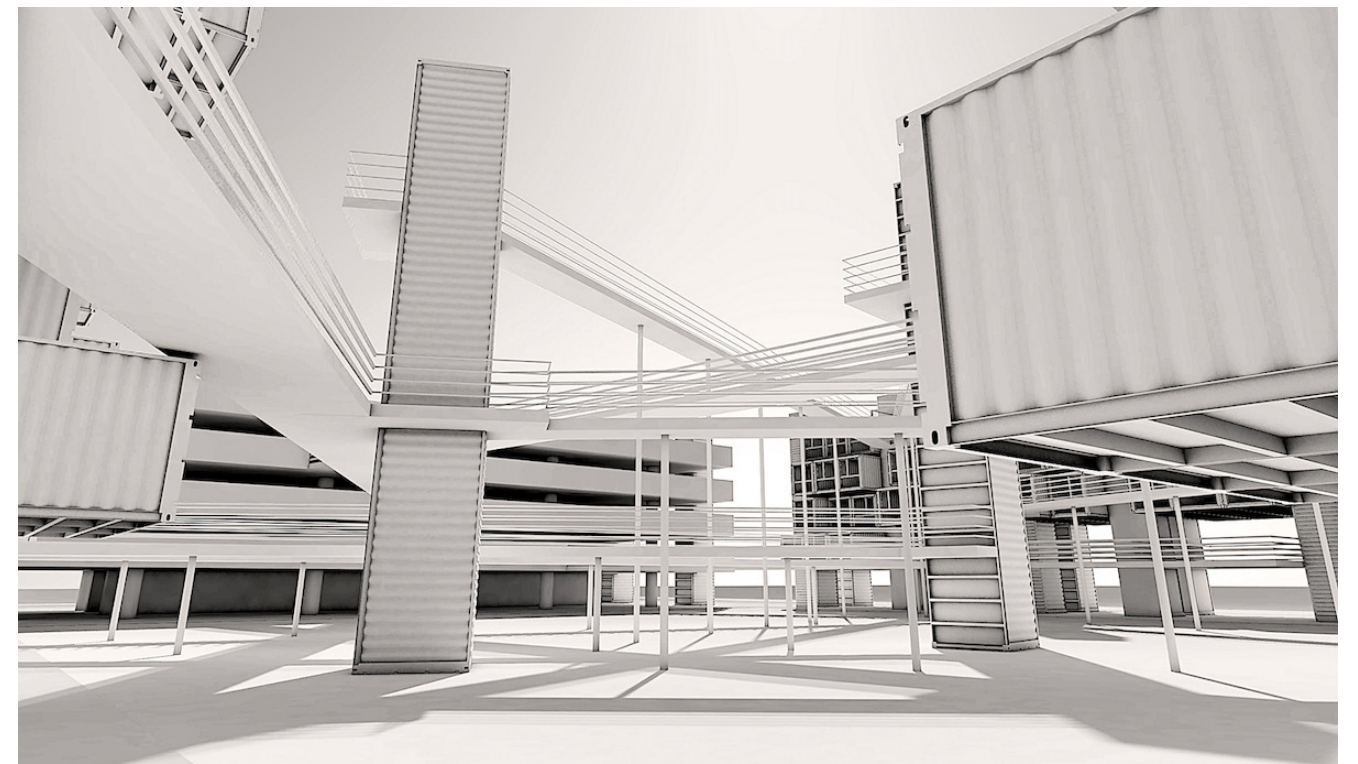
Set in a pine forest and other tree species, an office complex stretches around three buildings that lead to a parking reserved for employees and visitors.

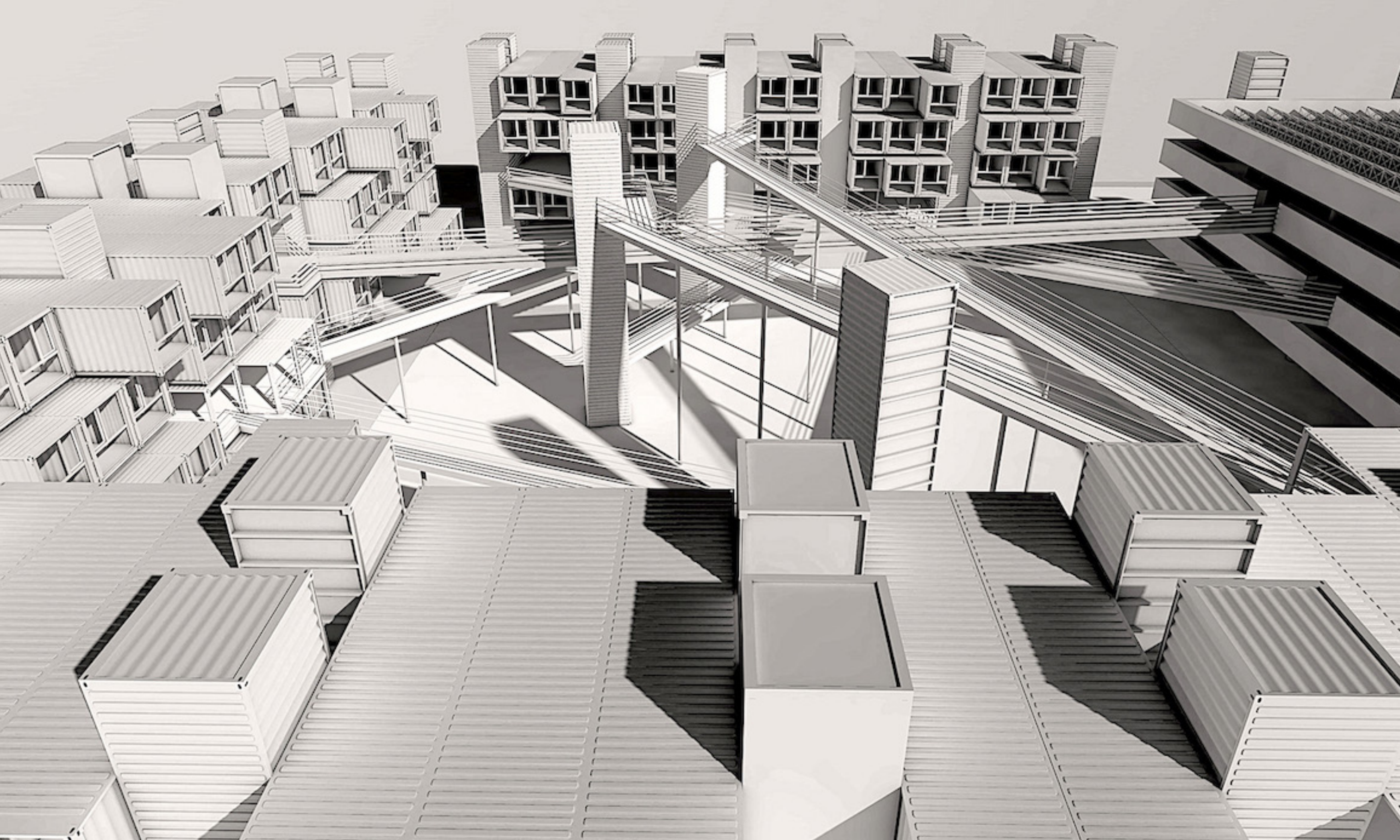
The three-level parking is a metallic structure suspended in the air. From there, three wooden walkways (one per level) serve directly to the three buildings.

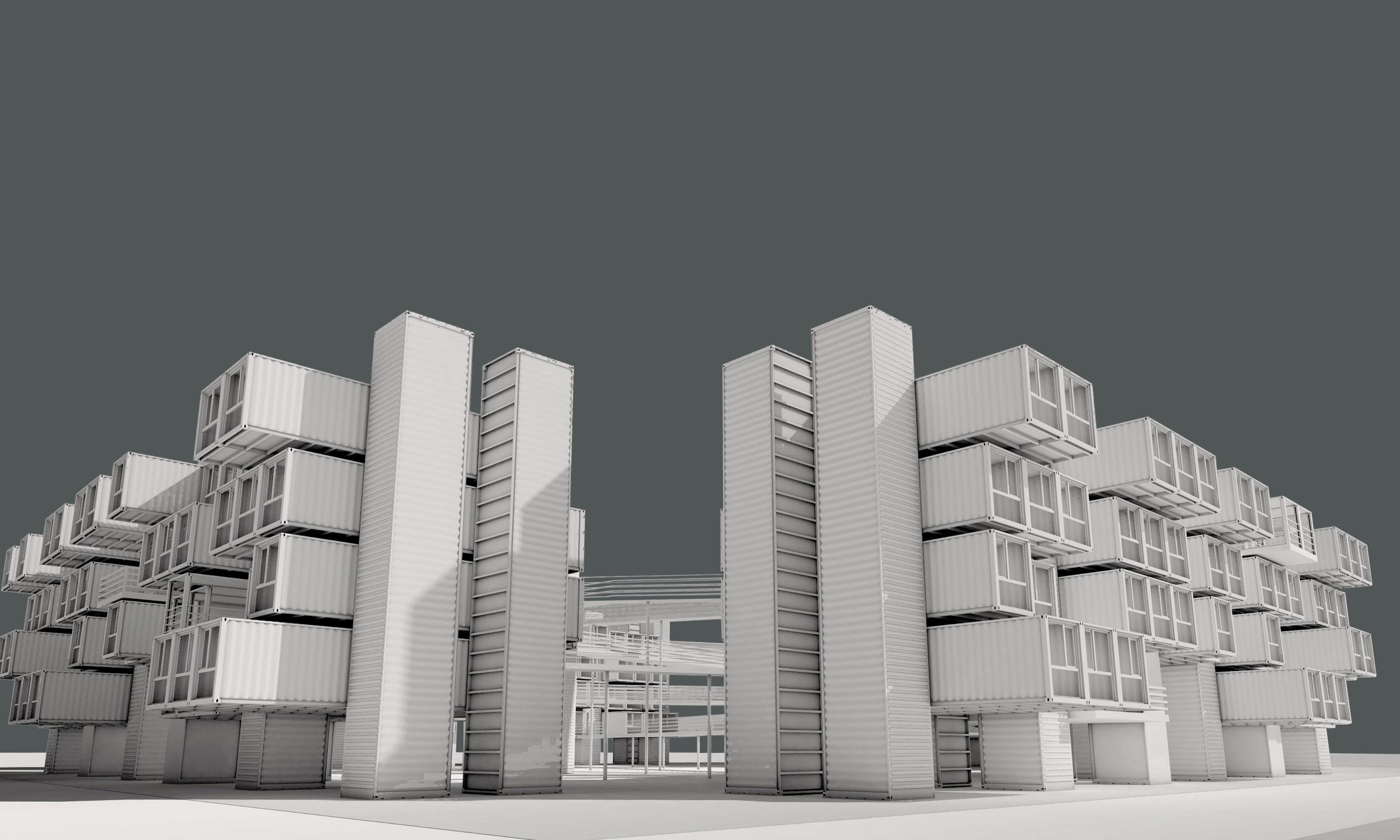
Inside the forest, three vertical containers of 53' with elevator shafts allow connections to the colored metallic walkways which link the three buildings to each other and to the office buildings. Each colored walkway connects two buildings to one office building.

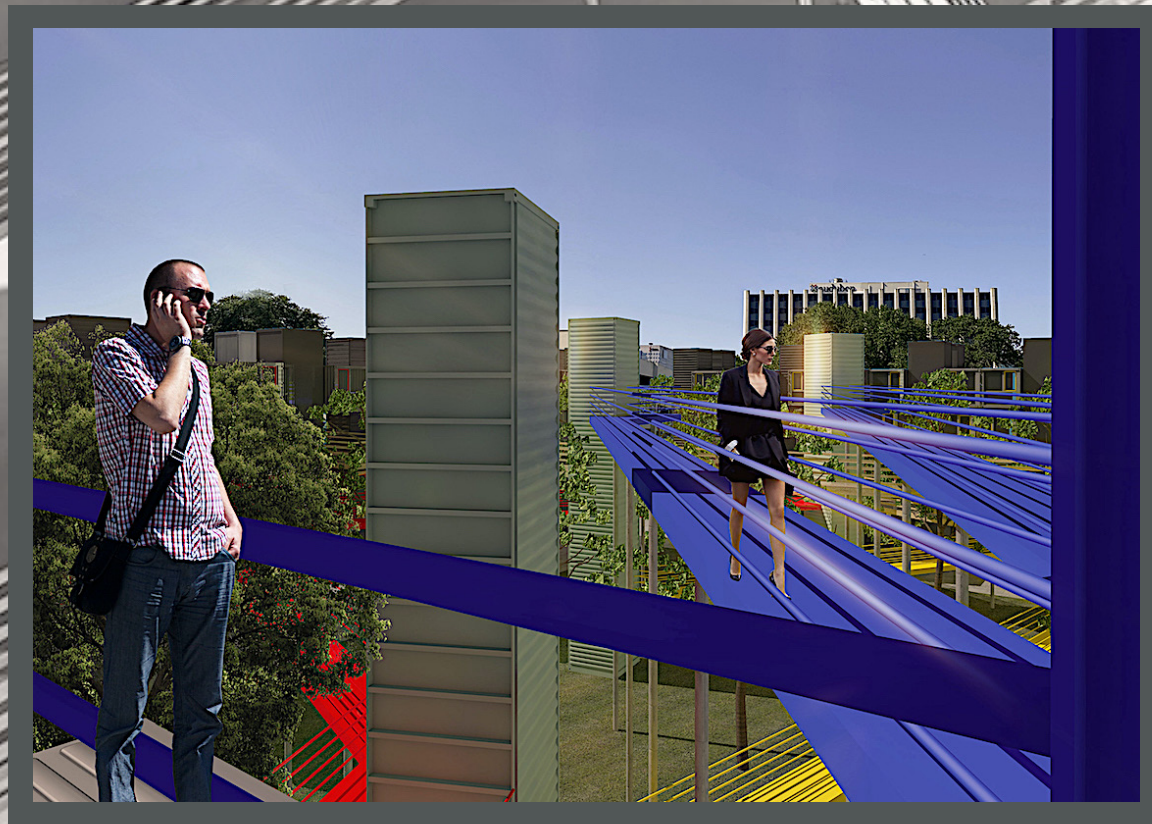
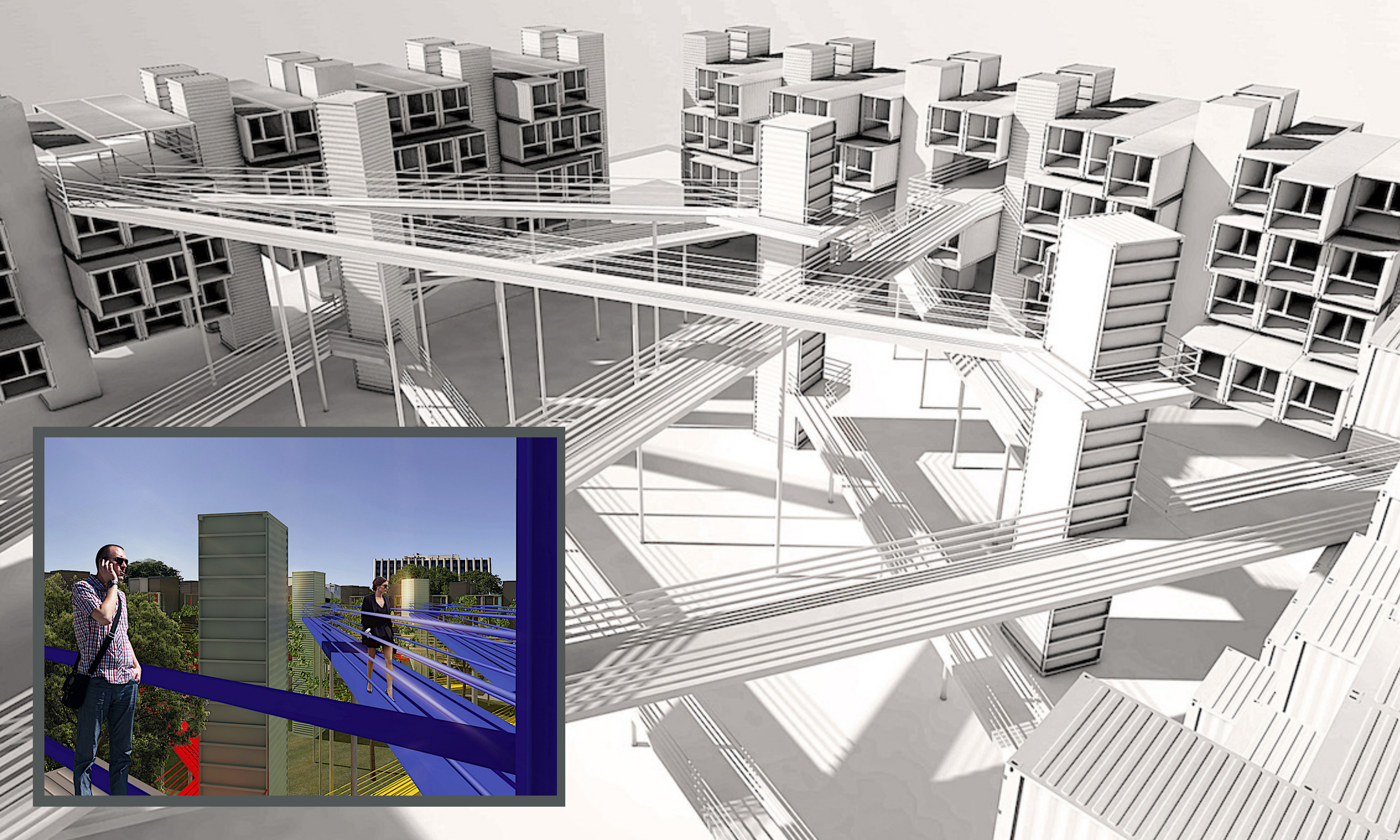
A color code is put in place starting from the parking and allows one to find their way easily; yellow for level 1, red for level 2 and blue for level 3. Each building can be easily identified by the three colors that are also found in their openable window frames.

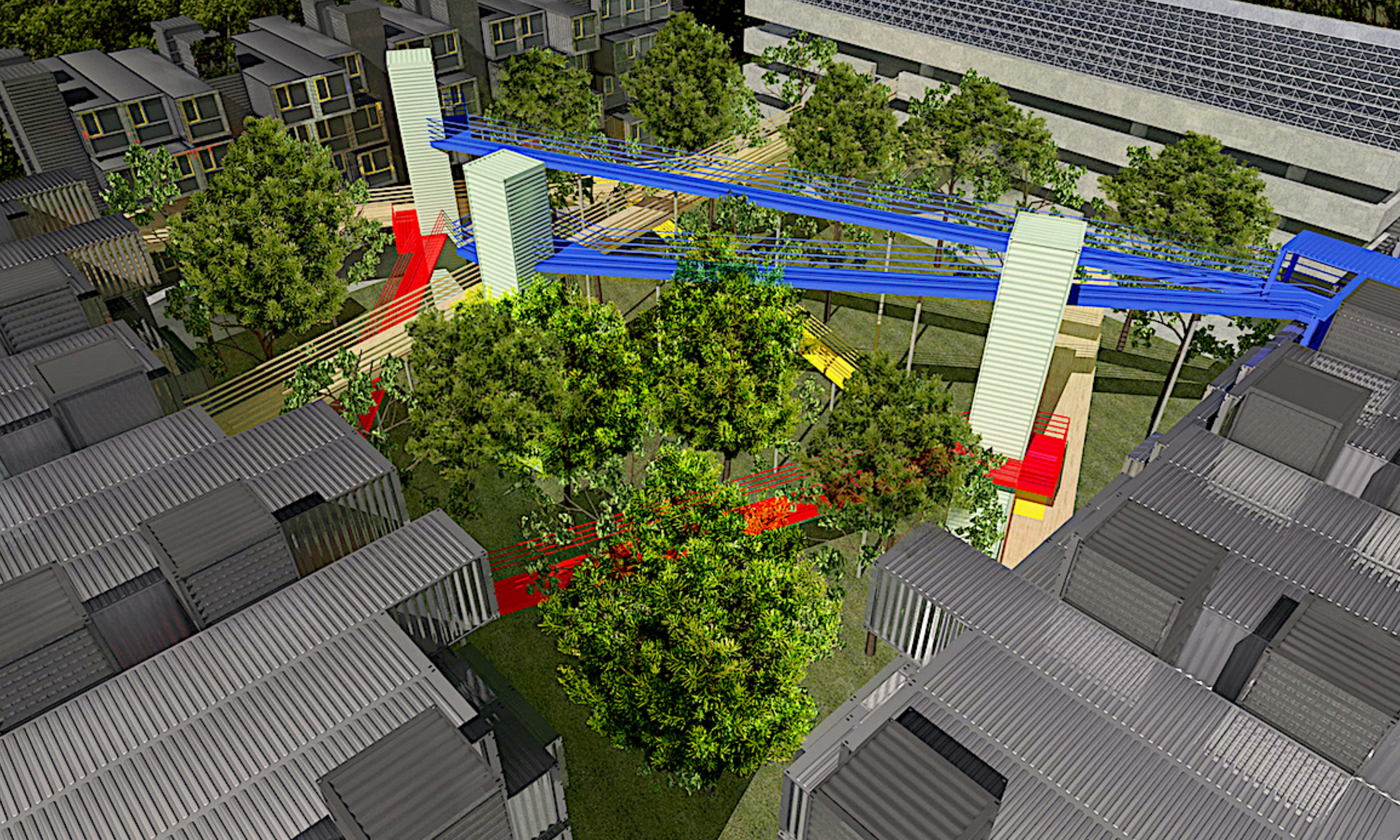
This complex is made of two hundred containers for a total surface of approximately 50,000.00 sq. ft. 155 horizontal containers of 40' welcome about 150 people (offices, meeting spaces, common areas, technical rooms, etc.), and forty-five vertical containers of 53' serve to surround the supporting structure of the buildings and to receive the vertical traffic (elevators and staircases).









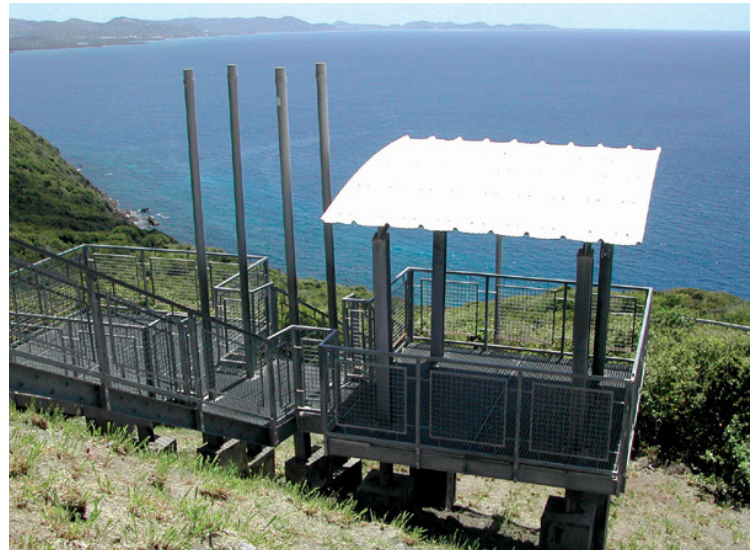












Claude YACOUB

Architect DESA, France

Born in Martinique, France (1962), lived most of his life in Fort-de-France and Paris, as well as in Damas. Lives in Houston since 2020.

Architect, graduated from the École Spéciale d'Architecture (ESA), Paris (1989). He also holds a Master in sustainable development from the same architecture school ESA (2008) and a Ph.D. in Information Science and Communication from Université Paris 8 (2011).

Strong with a 30-year experience as an independent architect in France, he has completed many projects in the fields of architecture, urbanism, design, and artistic structures.

Simultaneously, he has been teaching for 25 years: architecture, urbanism, design, and fine arts (Paris, Fort-de-France, Damas and Montréal).

As an associate researcher at the Citu-Paragraphe laboratory, Université Paris 8, he has published numerous scientific publications (personal articles and co-directed publications) and participated in international conferences.

Moreover, he is strongly involved in the associative field with the creation of a popular university, which has worked to train architects and engineers on the topics of rebuilding after natural disasters and conflicts.

