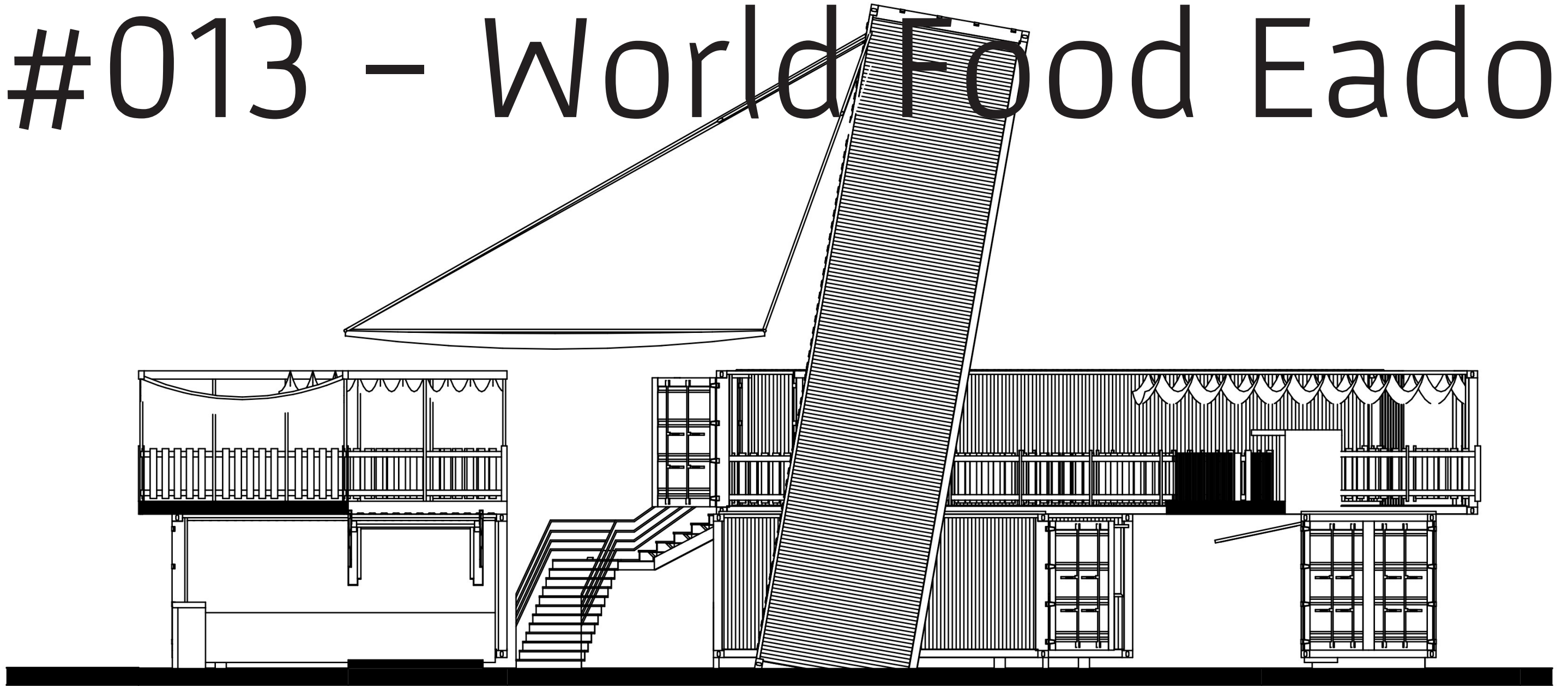


#013 – World Food Eado



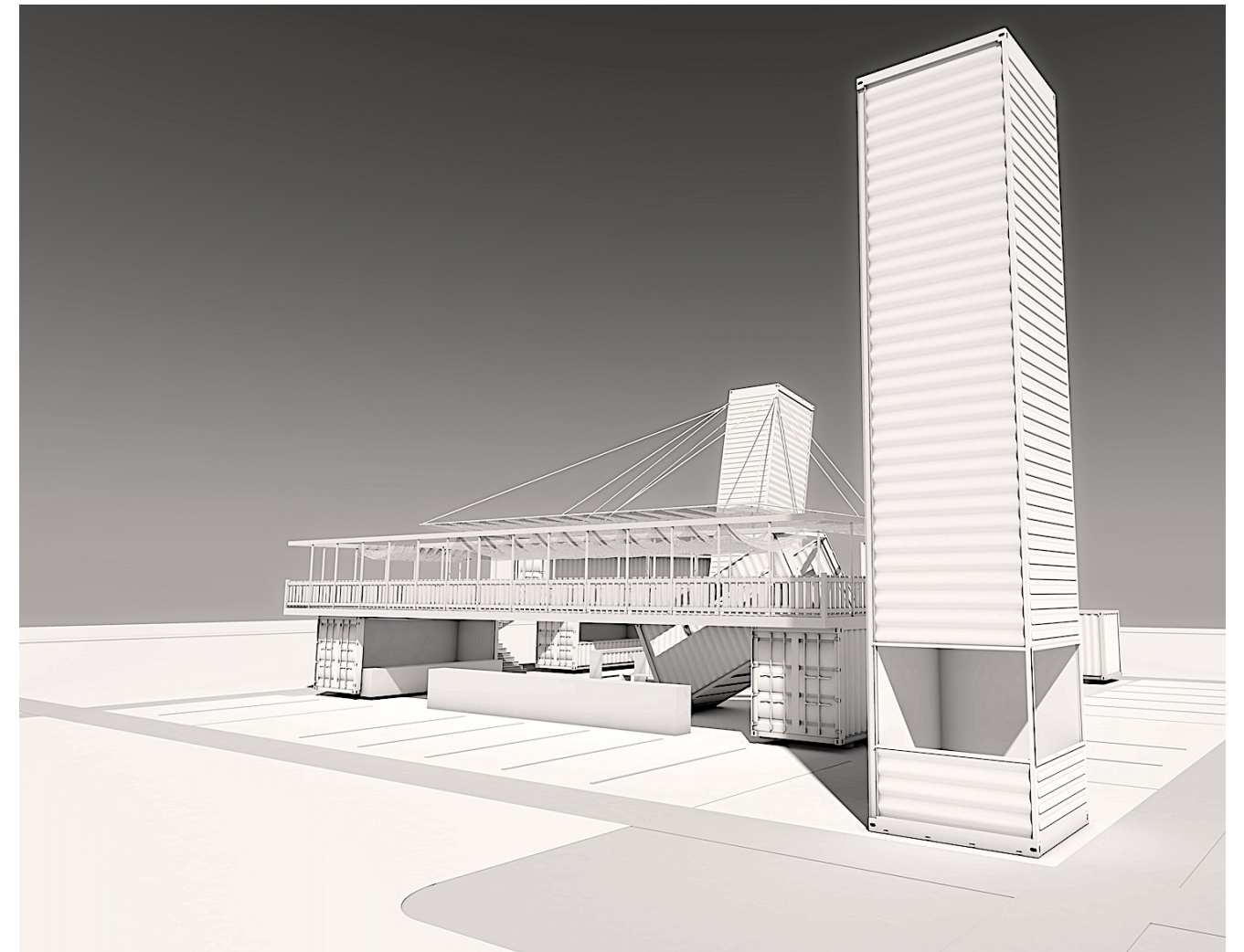
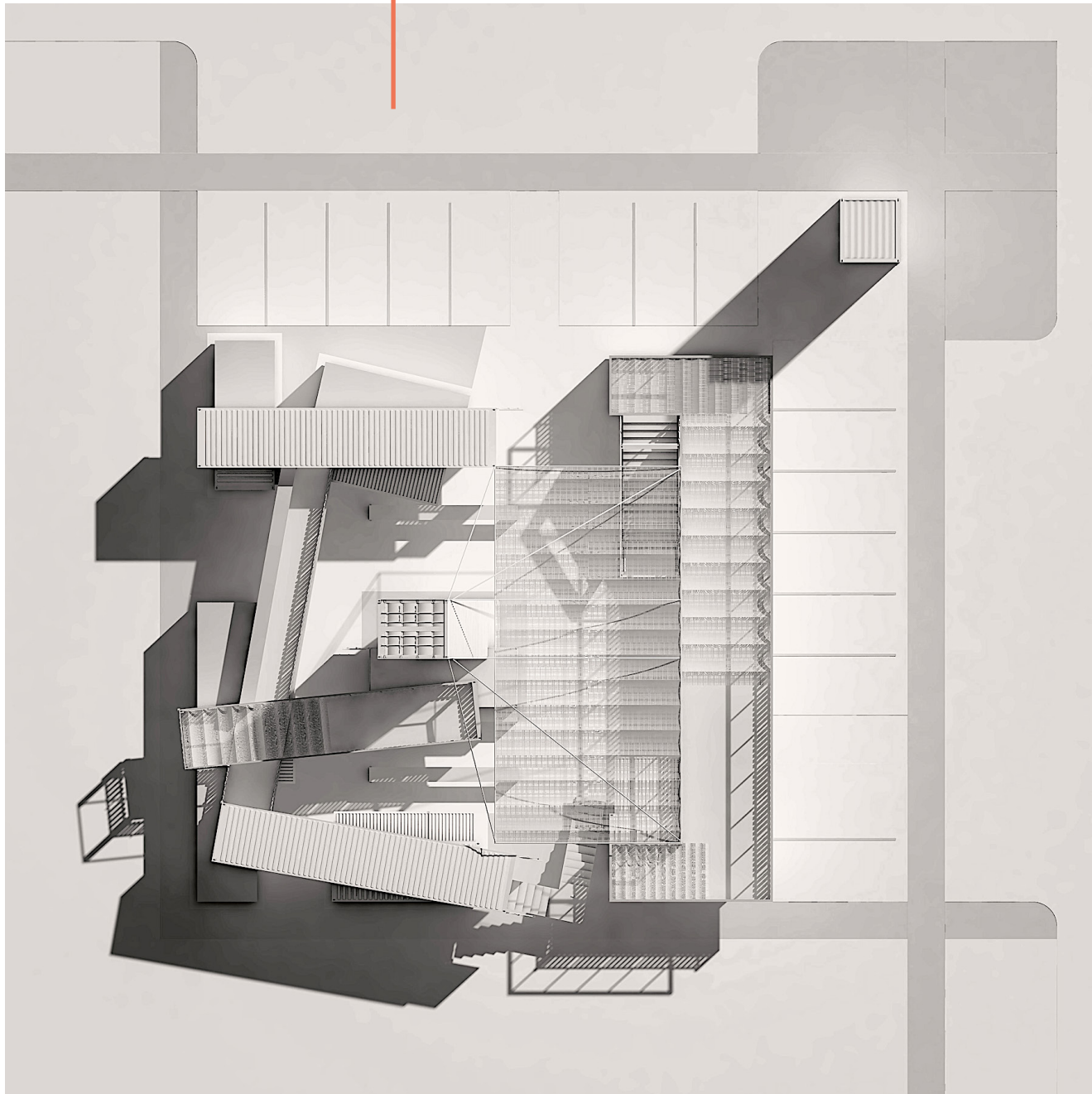
Namma & Containers, LLC

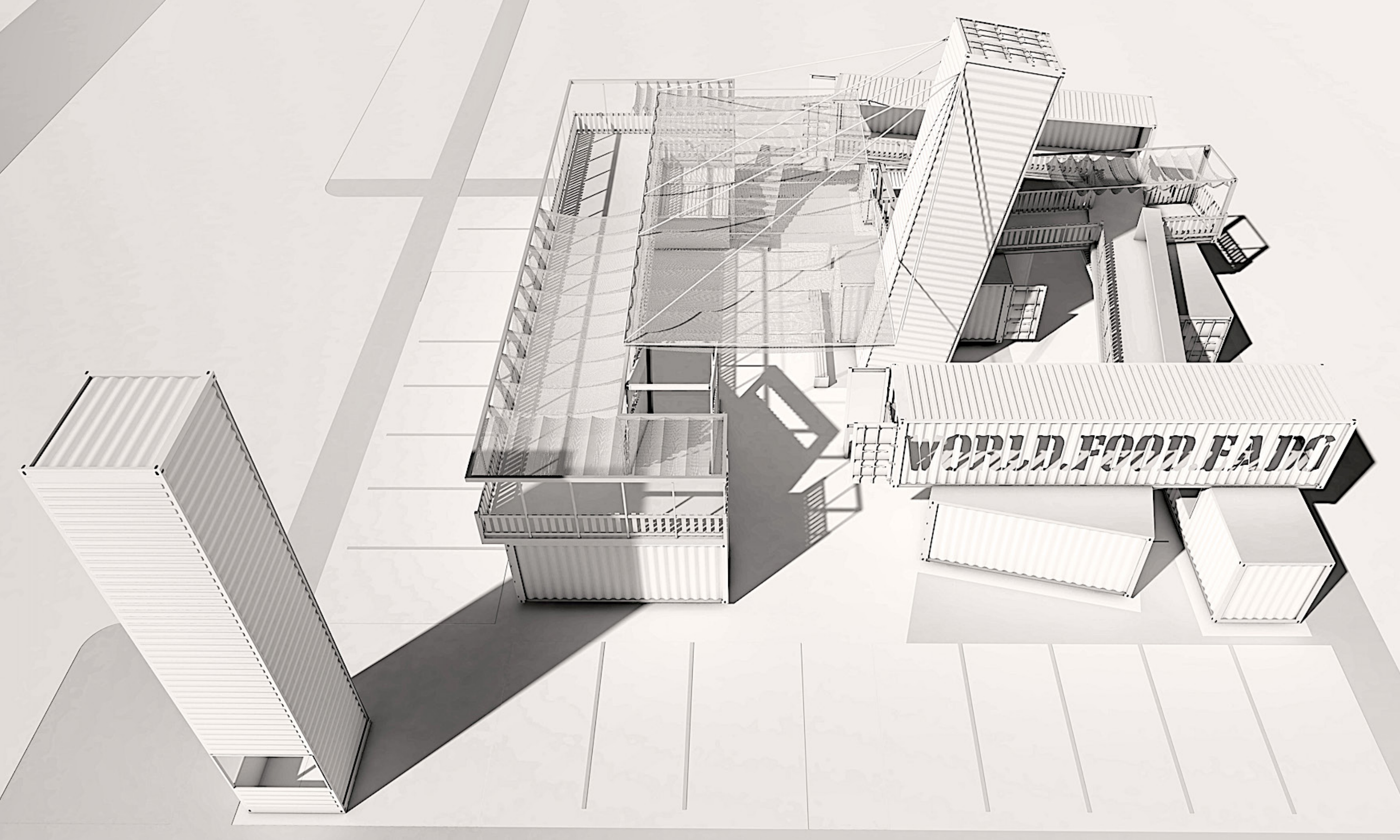
1940 Fountain View Drive, PO Box 477
Houston, TX 77057, USA
+1 (346) 401-6427
contact@nammacontainers.com
nammacontainers.com

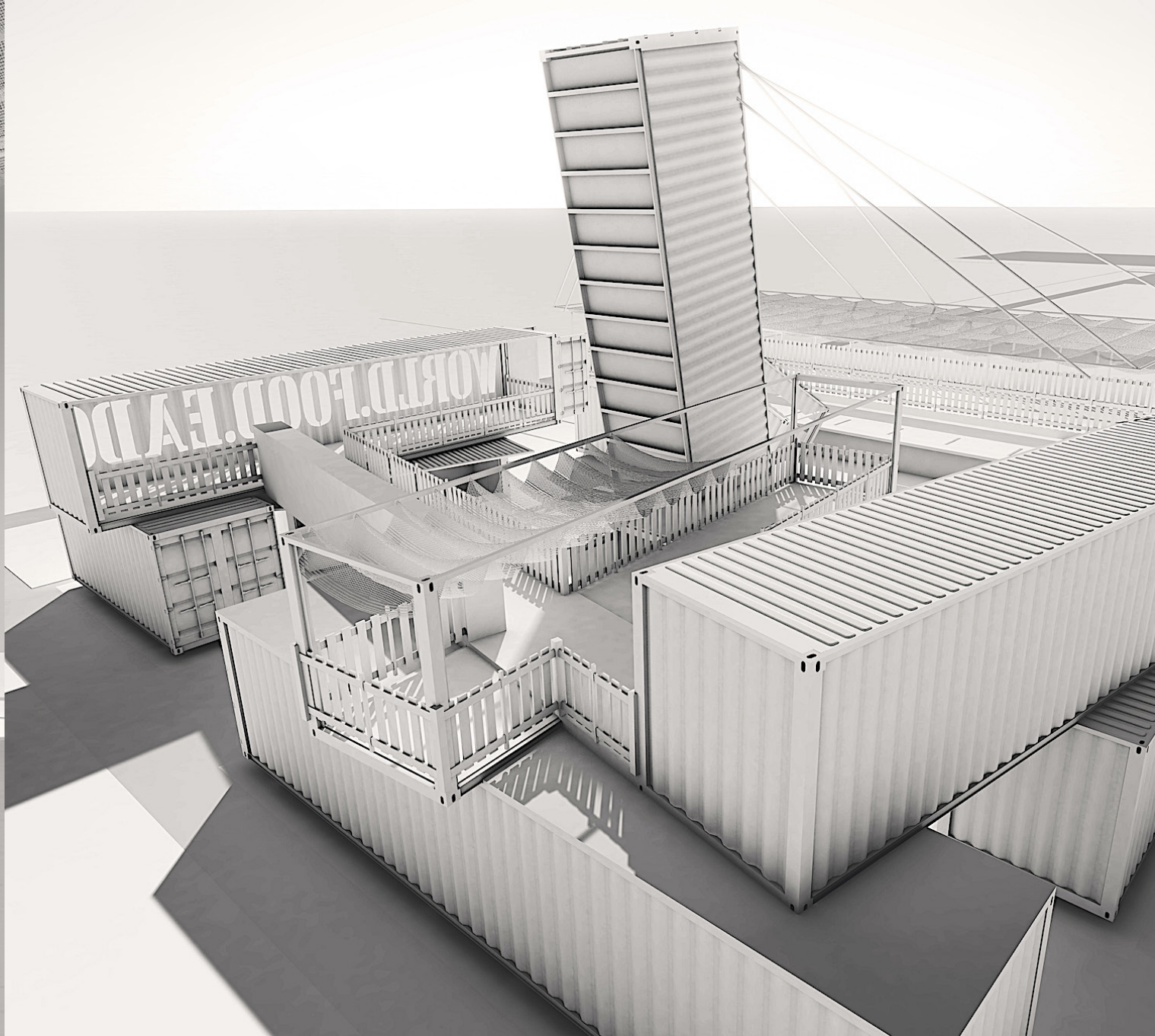
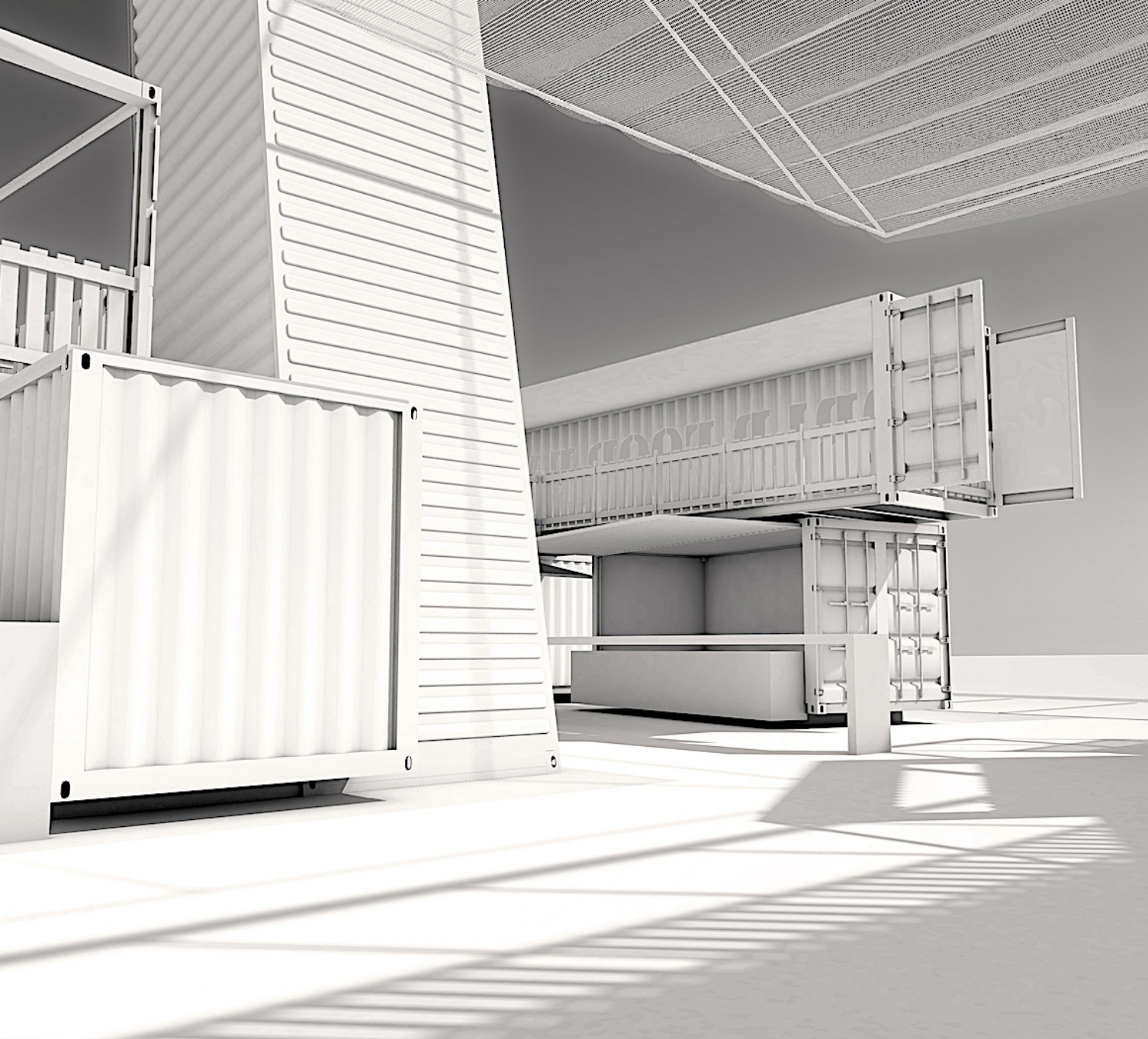


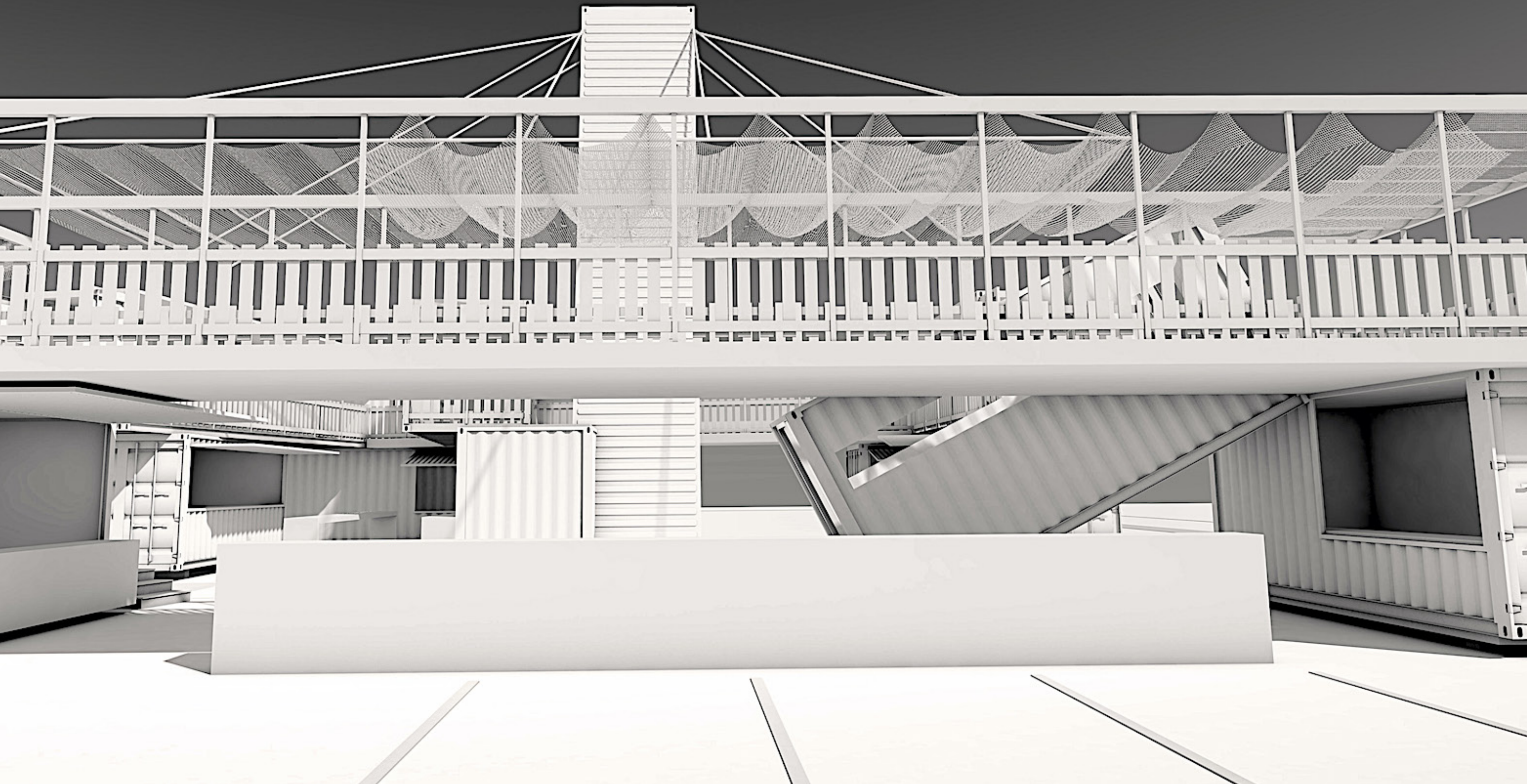
On a 10,000 sq. ft. plot (100' x 100'), located in East Downtown in Houston, containers of 20' and 40' welcome a gastronomical village with four kitchens: Levantine, Mexican, Vegan and Texan, with a capacity of 200 guests.

In a green oasis (green floors and terrasses), new containers with artistic murals (restaurants, kitchens, technical room, and restrooms), and other used containers with wood structures (for the seats) welcome a cosmopolitan and heteroclitte clientele on two levels.





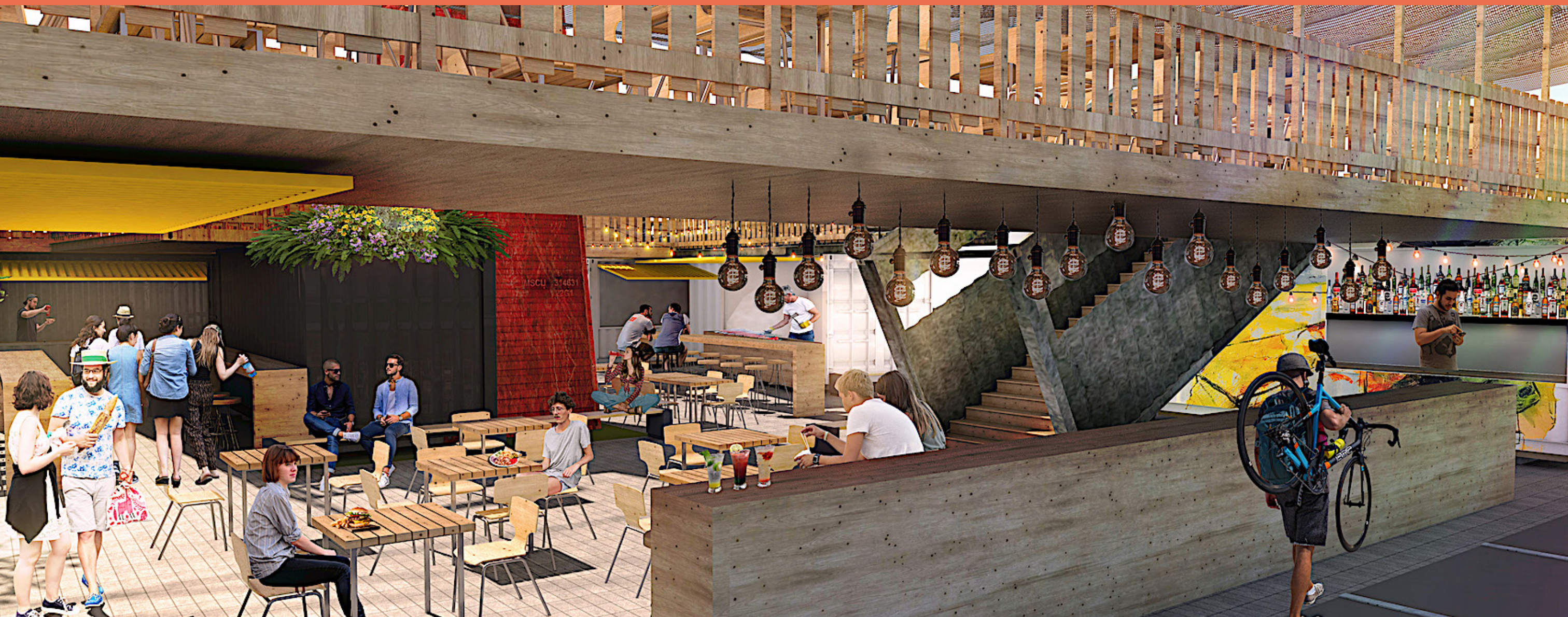






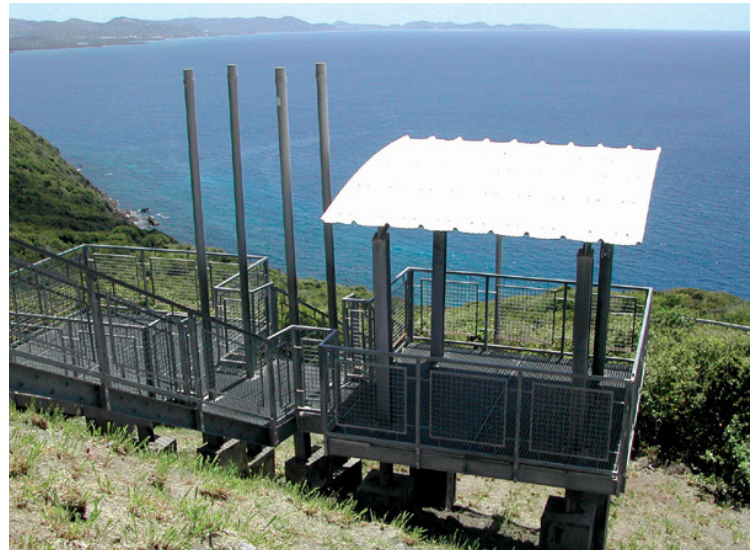


EEM









Claude YACOUB

Architect DESA, France

Born in Martinique, France (1962), lived most of his life in Fort-de-France and Paris, as well as in Damas. Lives in Houston since 2020.

Architect, graduated from the École Spéciale d'Architecture (ESA), Paris (1989). He also holds a Master in sustainable development from the same architecture school ESA (2008) and a Ph.D. in Information Science and Communication from Université Paris 8 (2011).

Strong with a 30-year experience as an independent architect in France, he has completed many projects in the fields of architecture, urbanism, design, and artistic structures.

Simultaneously, he has been teaching for 25 years: architecture, urbanism, design, and fine arts (Paris, Fort-de-France, Damas and Montréal).

As an associate researcher at the Citu-Paragraphe laboratory, Université Paris 8, he has published numerous scientific publications (personal articles and co-directed publications) and participated in international conferences.

Moreover, he is strongly involved in the associative field with the creation of a popular university, which has worked to train architects and engineers on the topics of rebuilding after natural disasters and conflicts.

