

#012 – Social Housing



Namma & Containers, LLC

1940 Fountain View Drive, PO Box 477
Houston, TX 77057, USA
+1 (346) 401-6427
contact@nammacontainers.com
nammacontainers.com





We are convinced that containers are part of a financially and socially pertinent answer to the question of social housing.

Thus, we have started to address this issue on a plot of about 20,000 sq. ft. located east of East Downtown. Our project is made up of a parking lot with fourteen spots including two for the disabled, which are linked to the two apartments dedicated to them, a garden with a play area for children, and a building on three levels for social housing.

The building is made of forty-two containers of 40' each on the first three levels, used for the living quarters and various rooms, and fourteen containers of 20' at the level 4, which host all the technical rooms. Four vertical containers of 45' High Cube are for the stairs, reaching each of the twenty-three apartments, offered in a range of six different types.

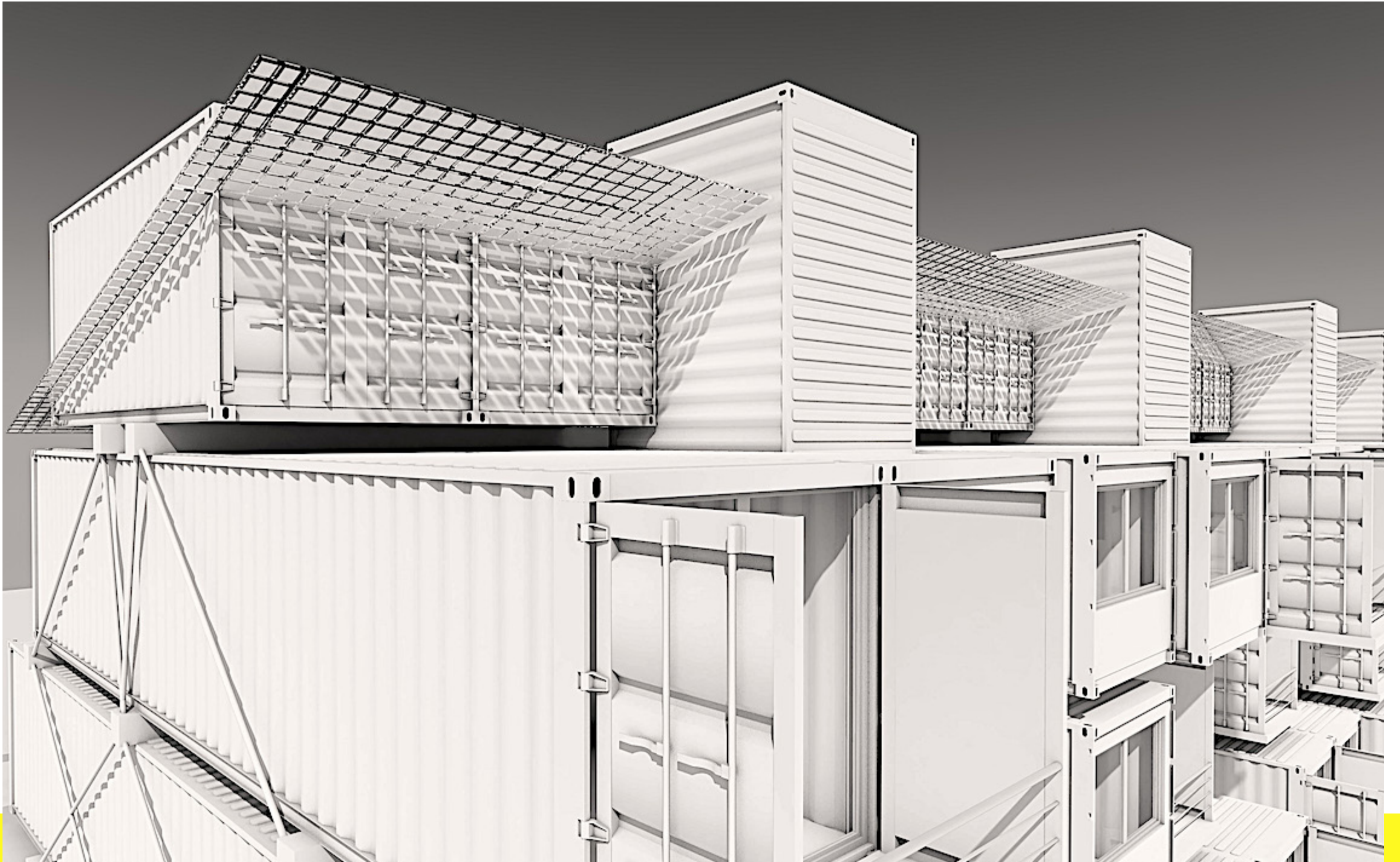
At the level 1: a container for the building manager (Tenant Service), one for the multipurpose space to serve the community (Social Area), one bike room and one common laundry room, as well as two containers for the twenty-three storage units (one per apartment) and storage rooms for the building maintenance and green spaces.

Still at level 1, one can find five apartments: two of Type 1 for disabled peoples (two bedrooms and a bathroom, 640 sq. ft.), two of Type 2 (two bedrooms and one bathroom, 640 sq. ft.) and one of Type 3 (one bedroom and one bathroom, 320 sq. ft.)

The levels 2 and 3 are identical in the apartment distribution (only their balcony spots are different). At all levels, one can find eight apartments: two of Type 3 (one bedroom and one bathroom, 320 sq. ft.), two of Type 4 (two bedrooms and one bathroom, 640 sq. ft.), two of Type 5 (two bedrooms and one bathroom, 640 sq. ft.) and two of Type 6 (two bedrooms and one bathroom, 640 sq. ft.). The difference between the apartments of type 4, 5 and 6 is found in the layout of the kitchens, bathrooms, and laundry rooms.







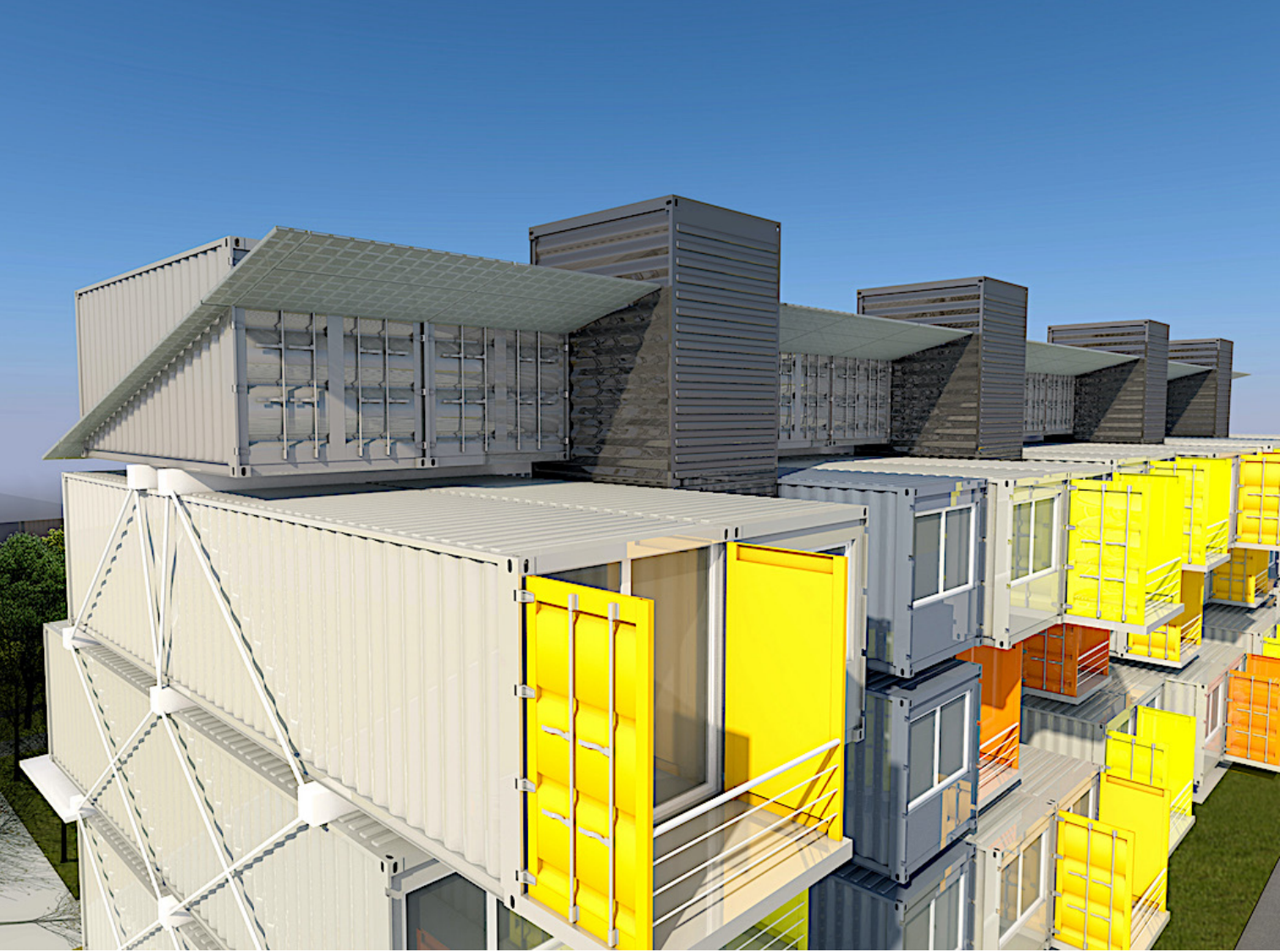


N Sampson St
200 100

Canal St
3400 3100









Claude YACOUB

Architect DESA, France

Born in Martinique, France (1962), lived most of his life in Fort-de-France and Paris, as well as in Damas. Lives in Houston since 2020.

Architect, graduated from the École Spéciale d'Architecture (ESA), Paris (1989). He also holds a Master in sustainable development from the same architecture school ESA (2008) and a Ph.D. in Information Science and Communication from Université Paris 8 (2011).

Strong with a 30-year experience as an independent architect in France, he has completed many projects in the fields of architecture, urbanism, design, and artistic structures.

Simultaneously, he has been teaching for 25 years: architecture, urbanism, design, and fine arts (Paris, Fort-de-France, Damas and Montréal).

As an associate researcher at the Citu-Paragraphe laboratory, Université Paris 8, he has published numerous scientific publications (personal articles and co-directed publications) and participated in international conferences.

Moreover, he is strongly involved in the associative field with the creation of a popular university, which has worked to train architects and engineers on the topics of rebuilding after natural disasters and conflicts.



