

# #007 Hotel



## Namma & Containers, LLC

1940 Fountain View Drive, PO Box 477  
Houston, TX 77057, USA  
+1 (346) 401-6427  
contact@nammacontainers.com  
nammacontainers.com





When one thinks of a shipping container, the maritime universe comes to mind: voyage, cargos, exchanges, and new horizons. Hence, we are offering a concept of hotel-apartments to develop in American port towns such as Houston and Galveston to begin with, and then to export around the world.

This first concept is located at 1700 Emancipation Ave, in East Downtown in Houston with a hotel structure reserved mainly, but not exclusively, to businessmen and women, curators, artists who come to work for a few days in Downtown, at the Museum District or elsewhere in town for one-time events.

On this plot of about 43,500 sq. ft., we have been able to build a parking with forty-two spaces (in accordance with the town planning rules), two buildings on five levels, a swimming pool and landscaping on the whole land surface.

Moreover, at the north-eastern corner, three containers are used as a billboard.

The two buildings are made of twenty-two hotel-apartments in High Cube containers.

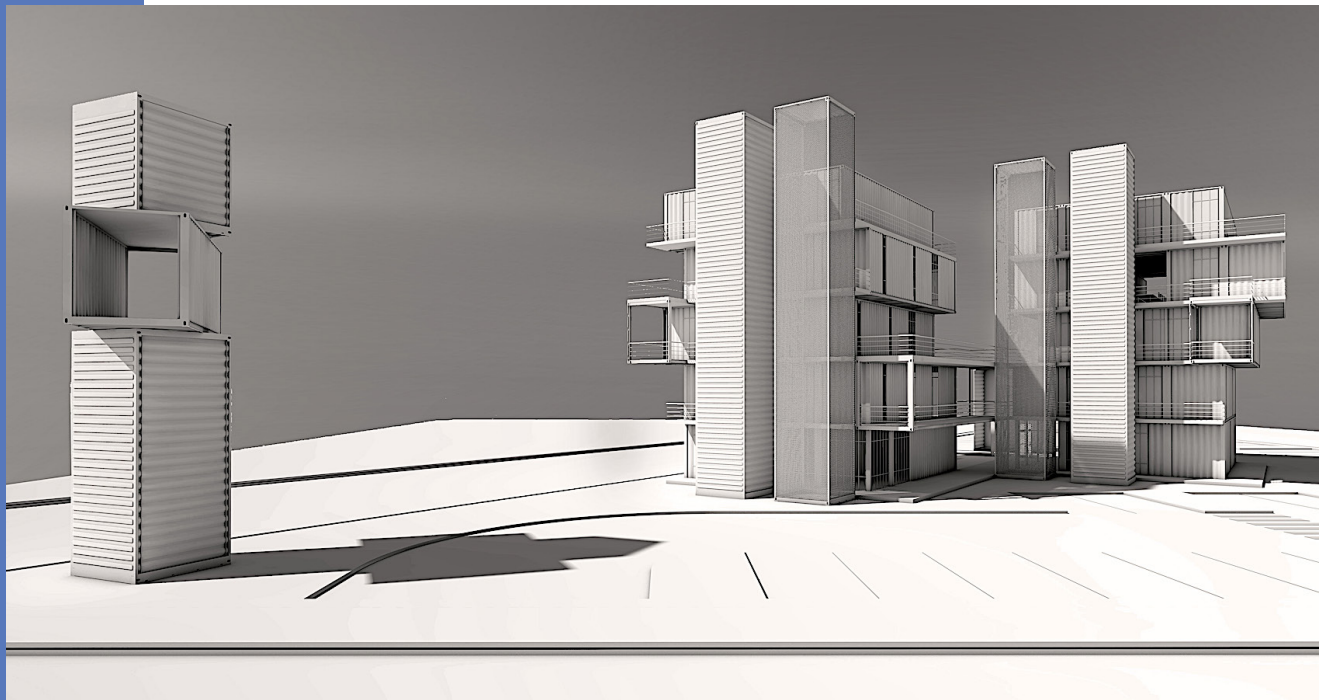
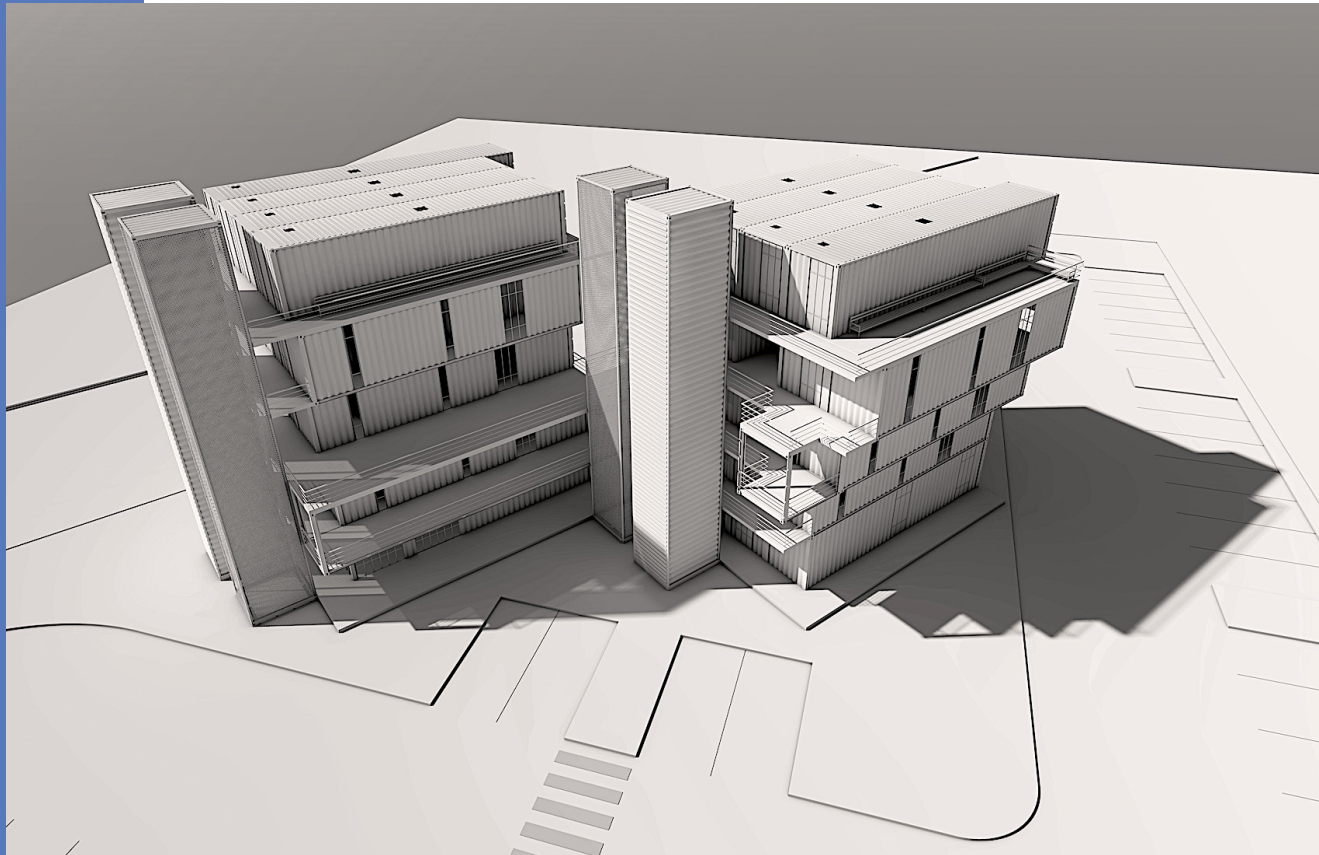
- thirty-four of 40' and six of 45' for the living spaces.

- five of 53' (four vertical for the elevators and staircases and one horizontal for a double walkway between the two buildings at levels 2 and 3).

- four of 10' for the relaxation spaces.

At level 1, Building A is for the Lobby, the reception, the restrooms for the clients, including one for the disabled, an office for the general manager and the accountant, a space for the personnel and their restrooms, and a Technical Room.

In Building B is a bar-restaurant, its kitchen, restrooms, and a space for maintenance and storage.

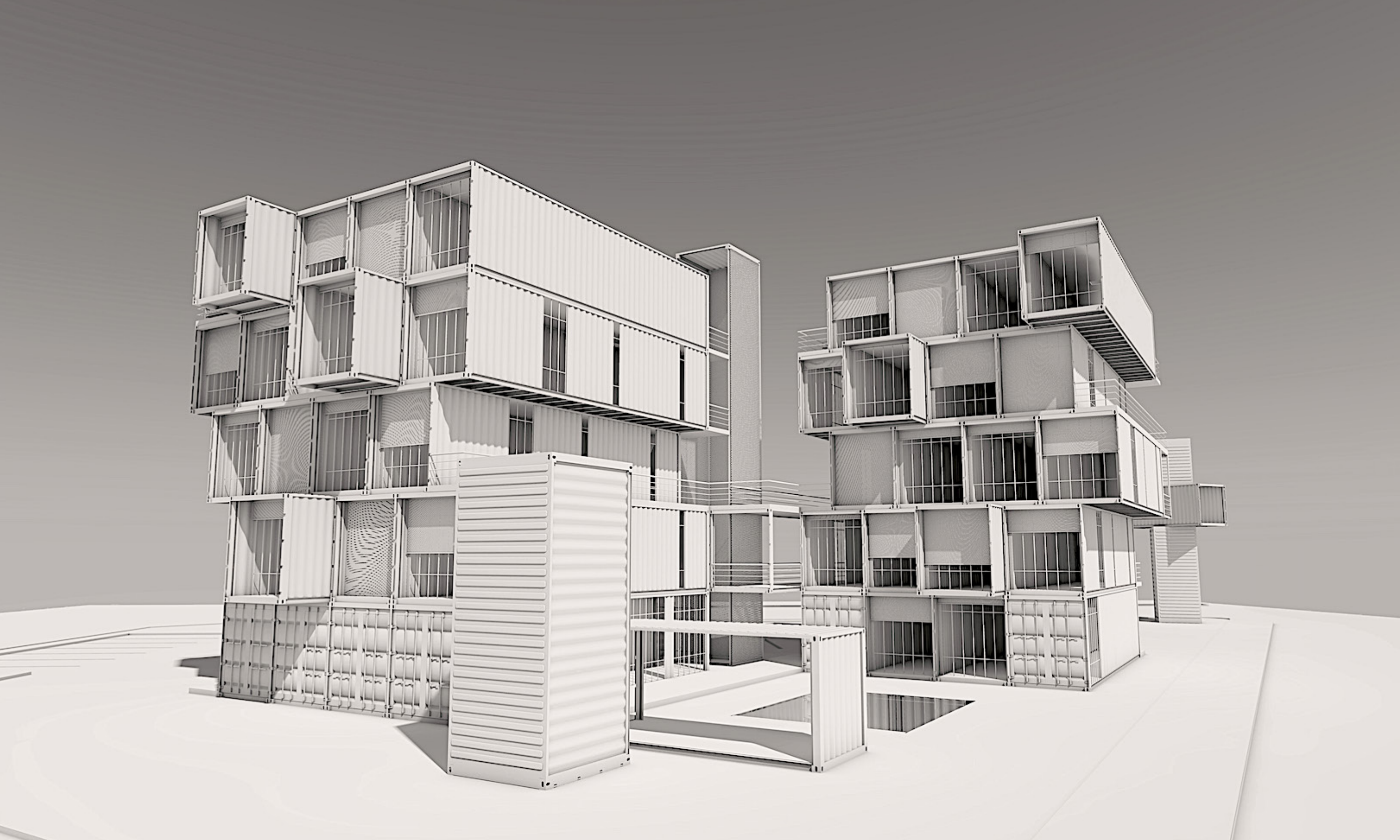


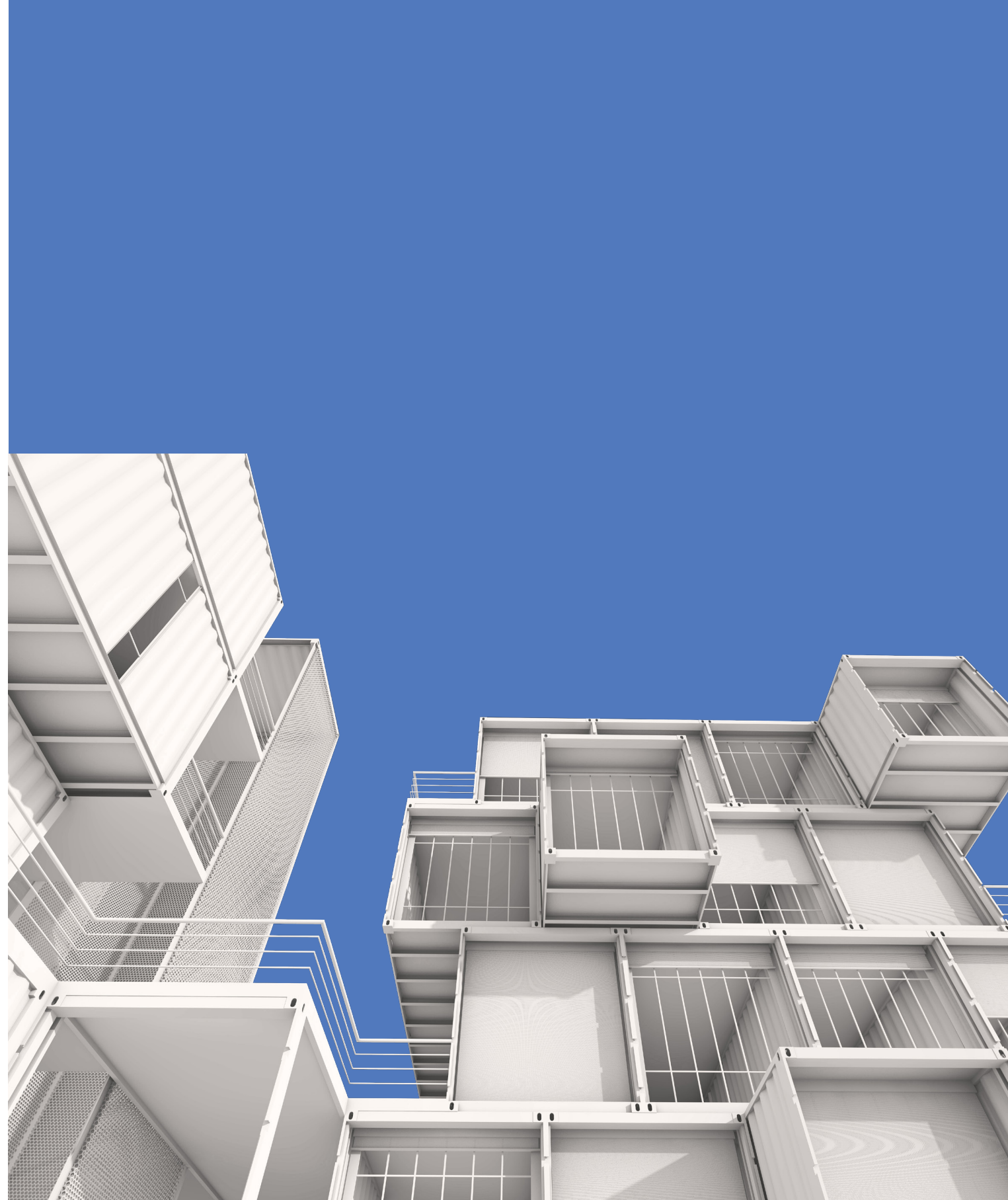
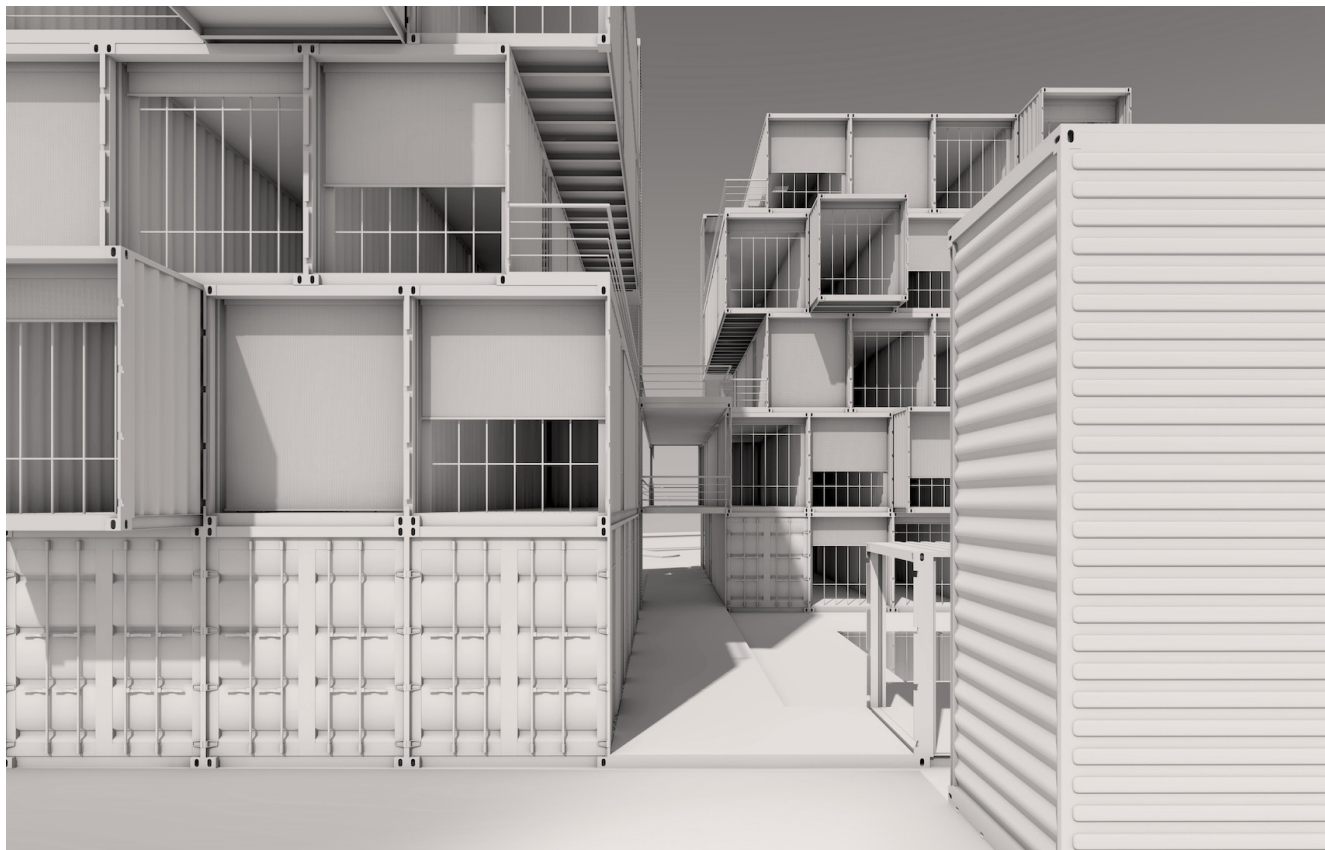
From the levels 2 to 5, one can find twenty-two hotel-apartments with six different configurations, served by exterior passageways. One can also find relaxation spaces, meeting spaces and “plein air” spaces at all the various levels.

Types of hotel-apartments:

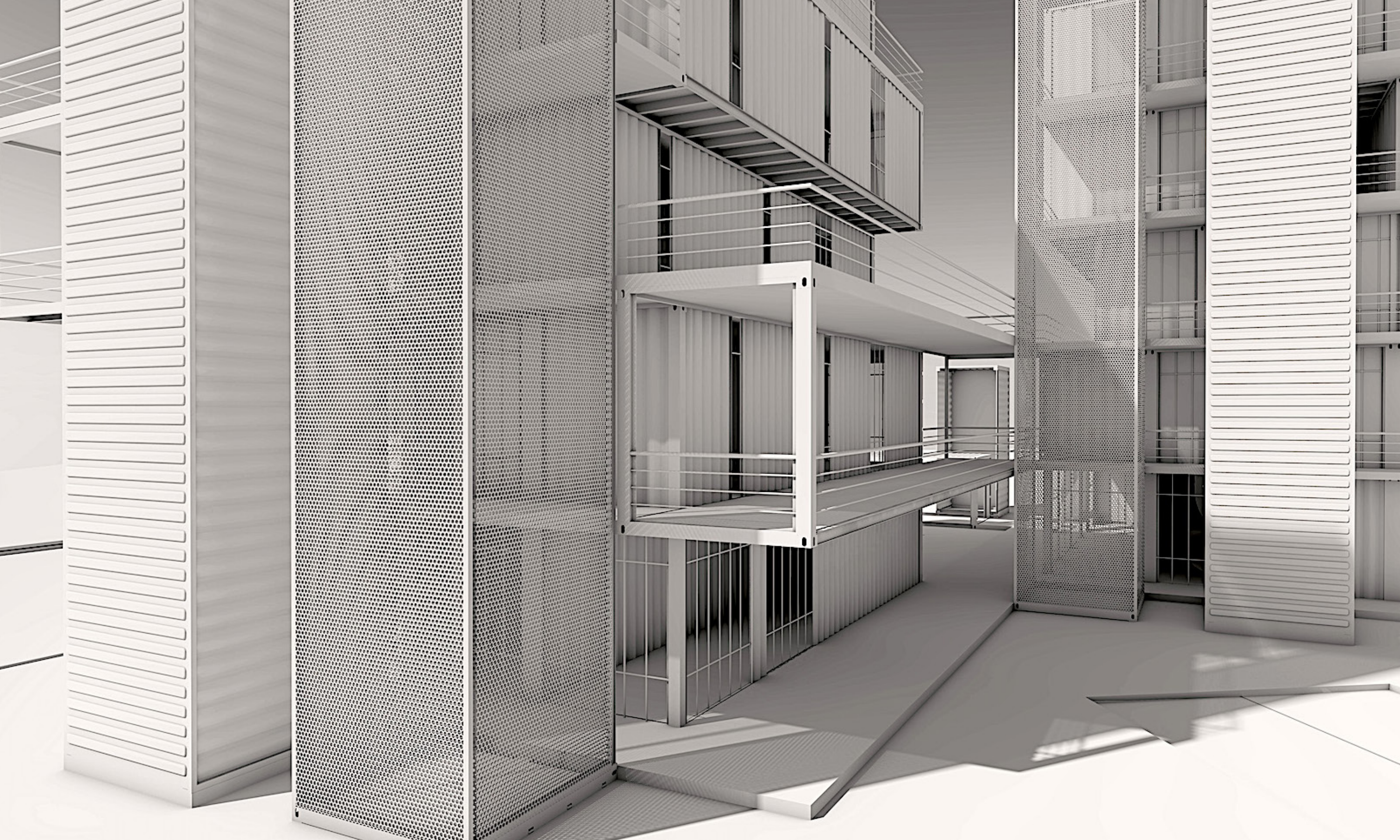
- Eight of Type 1 (320 sq. ft.) in a 40’ container for one or two people. One bedroom, one living-room space, one kitchen and a full bathroom, as well as all the amenities.
- Two of Type 1a (360 sq. ft.) – identical to Type 1 but with a larger surface as it is built in a 45’ container.
- Two of Type 2 (400 sq. ft.) in a 40’ container and one fourth of the neighboring container. We reserve this space with the same layout as the Type 1 for a disabled person (who can be accompanied by another guest). One bedroom, one large living room space, one kitchen and dining room, a large bathroom and all the amenities.
- Two of Type 3 (560 sq. ft.) in a container and three fourths of another one (adjacent space to the Type 2). We have a large hotel-apartment for 2 to 3 people.
- Four of Type 4 (640 sq. ft.) in two 40’ containers. This is the largest hotel-apartment of this structure that can welcome two to four people. It is made of a living room space, an independent bedroom, a dining room, a kitchen, a large bathroom, and a large storage space.
- Four of Type 4a (680 sq. ft.) identical to the Type 4 in its makeshift shape with a larger surface as it is built in a 40’ container and a 45’ container.

Depending on the requests, we can imagine other configurations such as a twenty-two hotel-apartments of Type 1 and 1a.

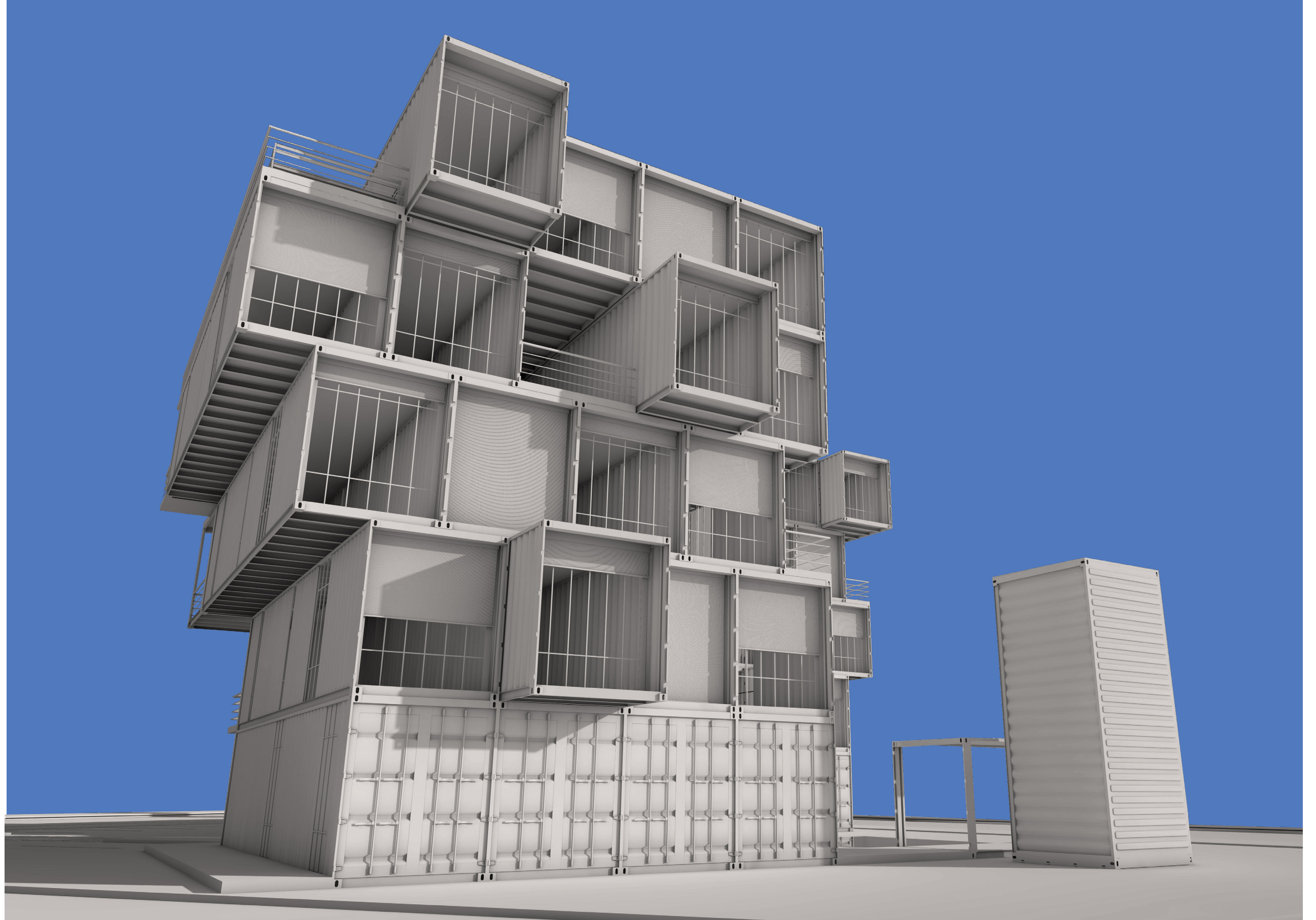






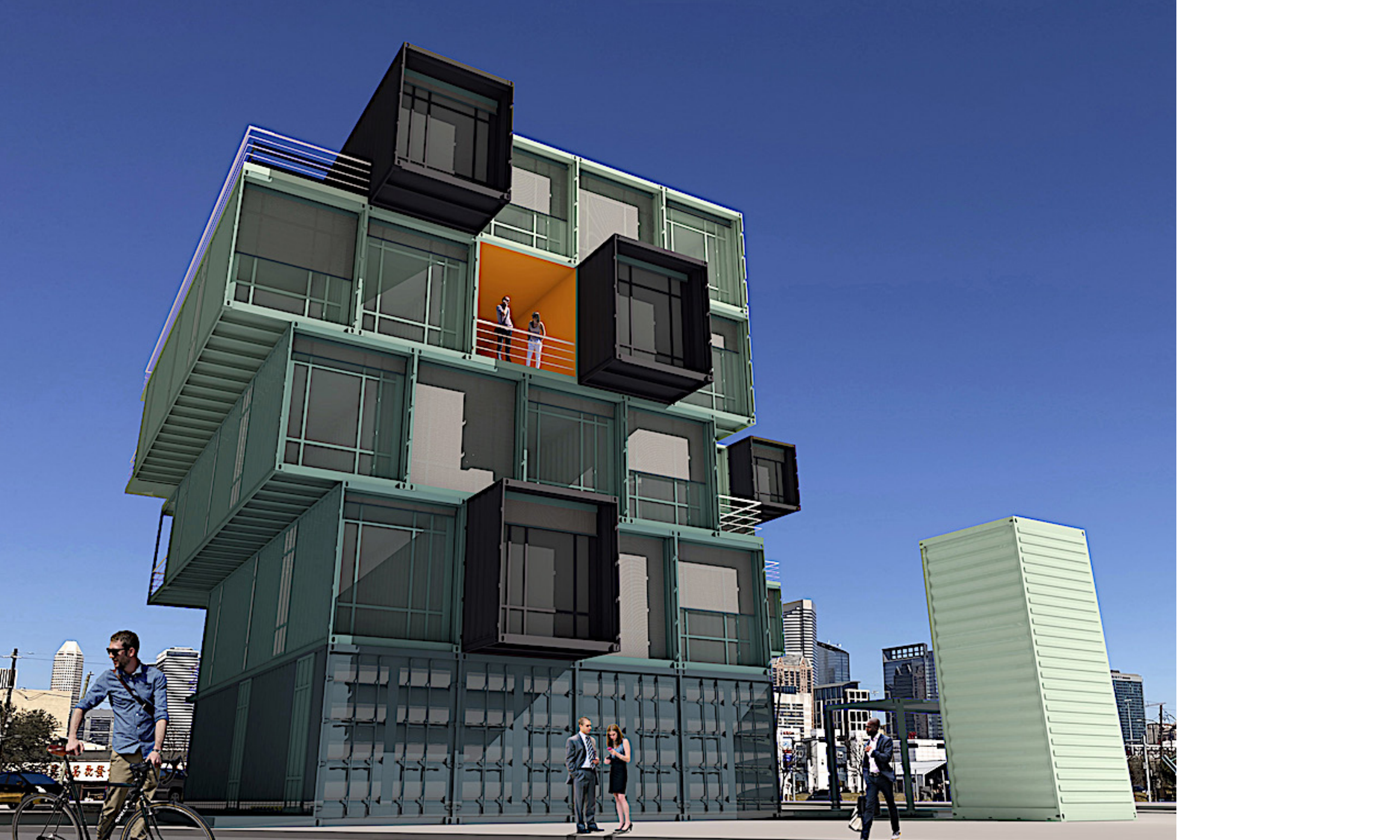


















# Claude YACOUB

Architect DESA, France

Born in Martinique, France (1962), lived most of his life in Fort-de-France and Paris, as well as in Damas. Lives in Houston since 2020.

Architect, graduated from the École Spéciale d'Architecture (ESA), Paris (1989). He also holds a Master in sustainable development from the same architecture school ESA (2008) and a Ph.D. in Information Science and Communication from Université Paris 8 (2011).

Strong with a 30-year experience as an independent architect in France, he has completed many projects in the fields of architecture, urbanism, design, and artistic structures.

Simultaneously, he has been teaching for 25 years: architecture, urbanism, design, and fine arts (Paris, Fort-de-France, Damas and Montréal).

As an associate researcher at the Citu-Paragraphe laboratory, Université Paris 8, he has published numerous scientific publications (personal articles and co-directed publications) and participated in international conferences.

Moreover, he is strongly involved in the associative field with the creation of a popular university, which has worked to train architects and engineers on the topics of rebuilding after natural disasters and conflicts.



