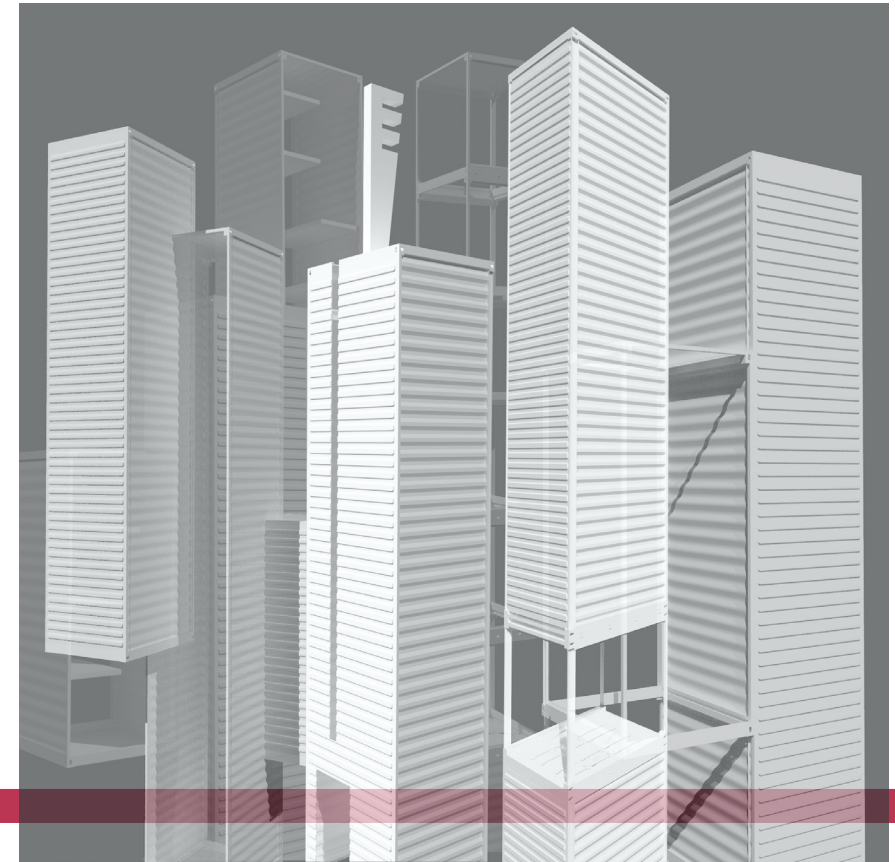


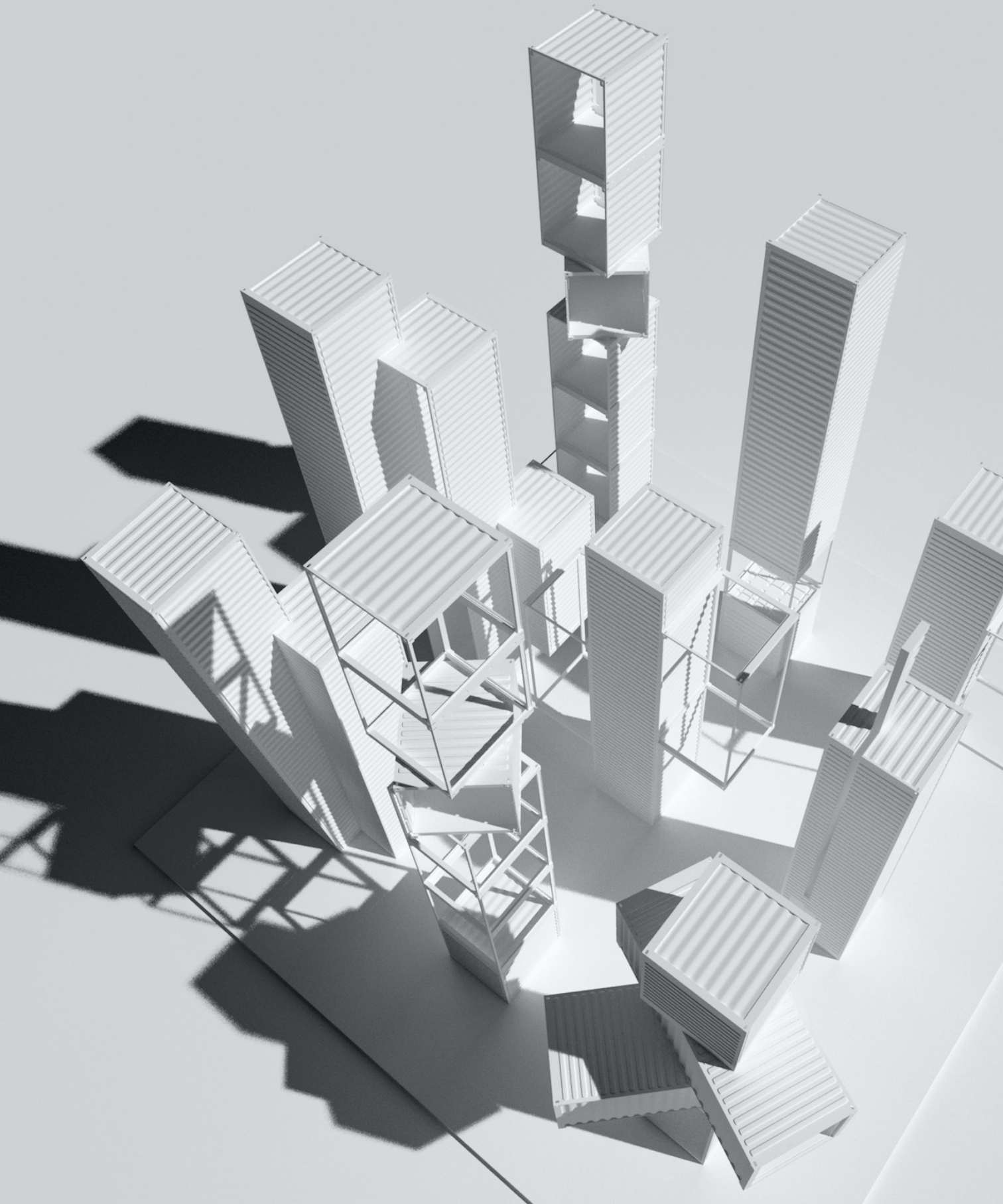
#006 Billboards



Namma & Containers, LLC

1940 Fountain View Drive, PO Box 477
Houston, TX 77057, USA
+1 (346) 401-6427
contact@nammacontainers.com
nammacontainers.com



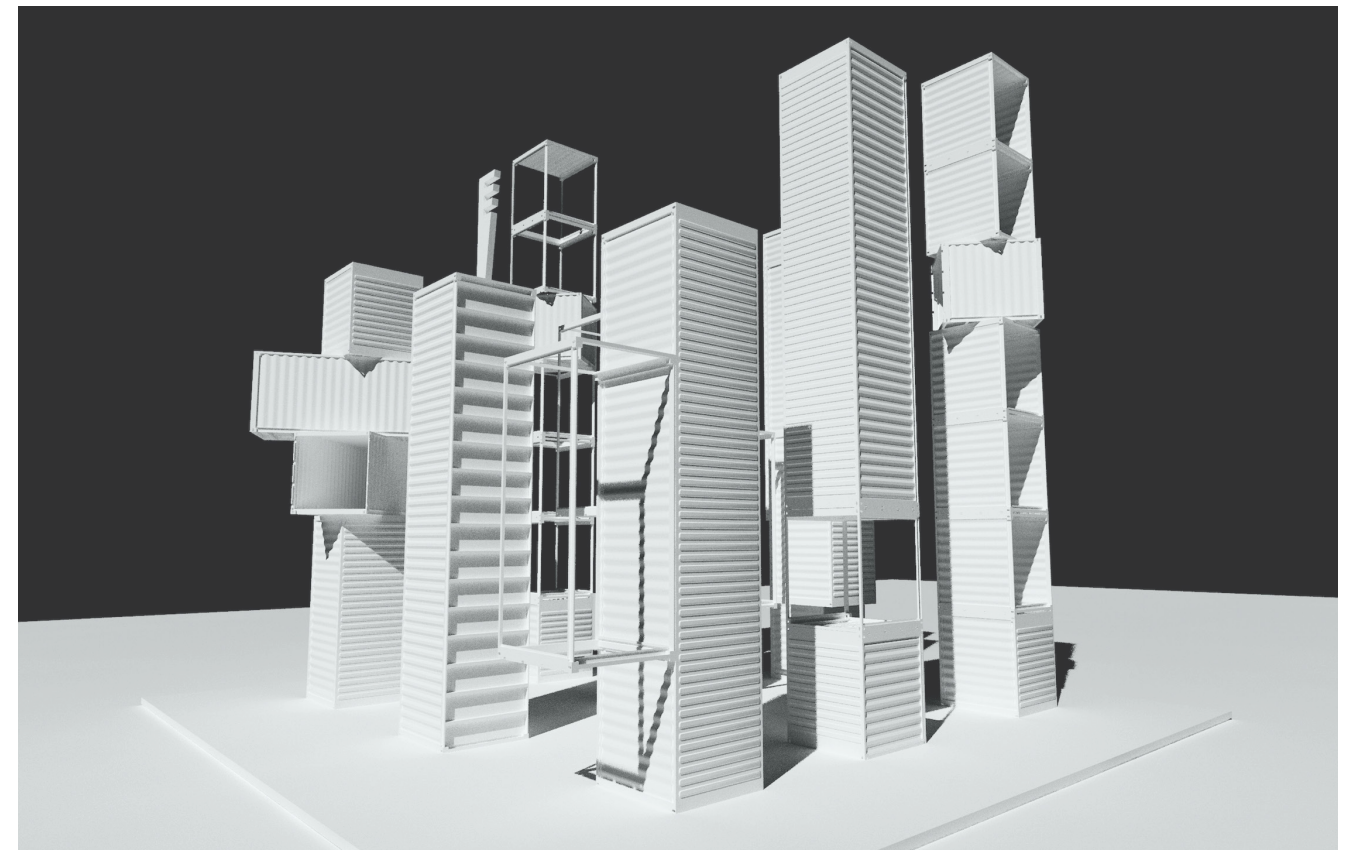


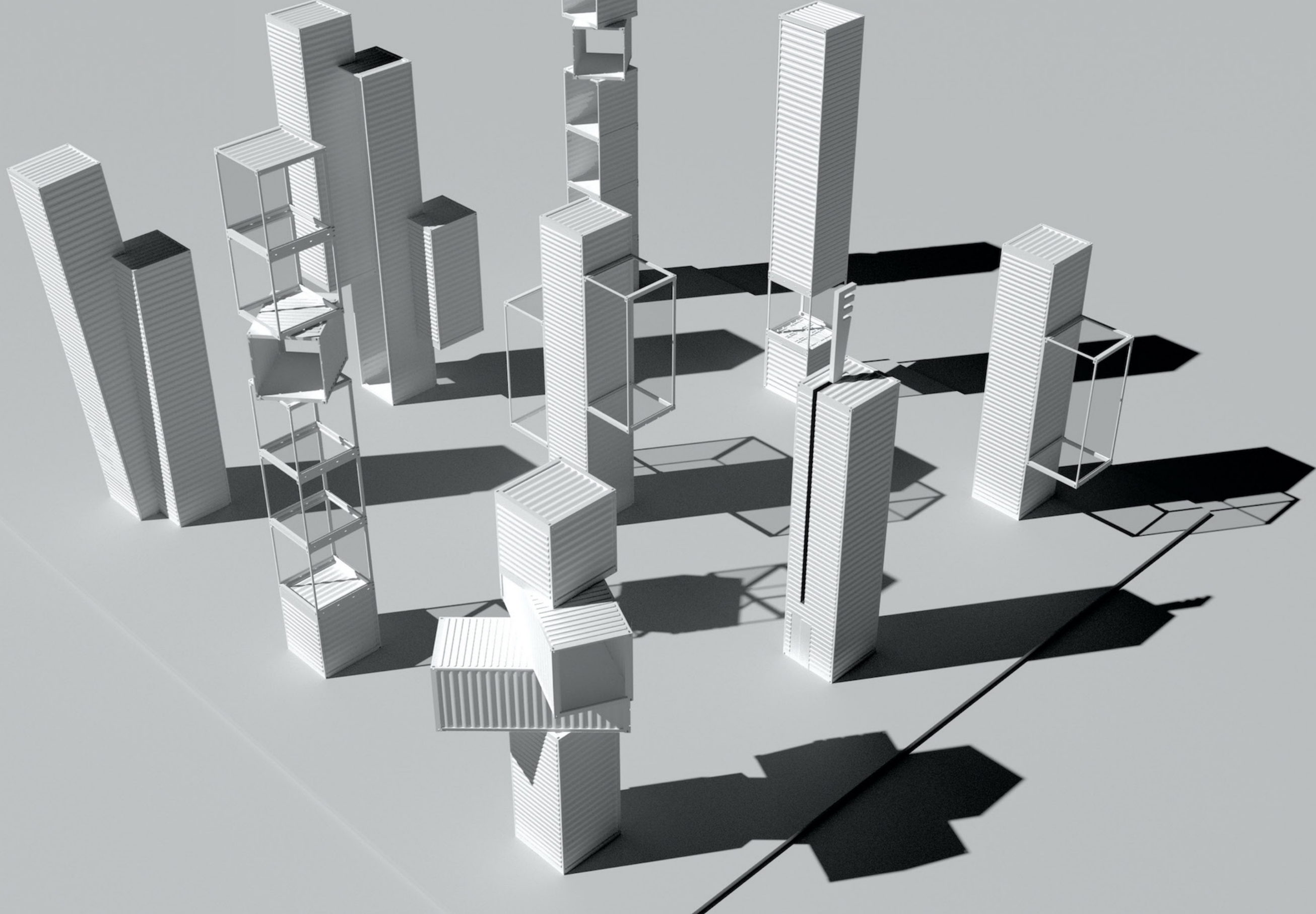
We looked into a sector that concerns town planning as much as design: advertising signs located on main roads and at the entrance of shopping centers.

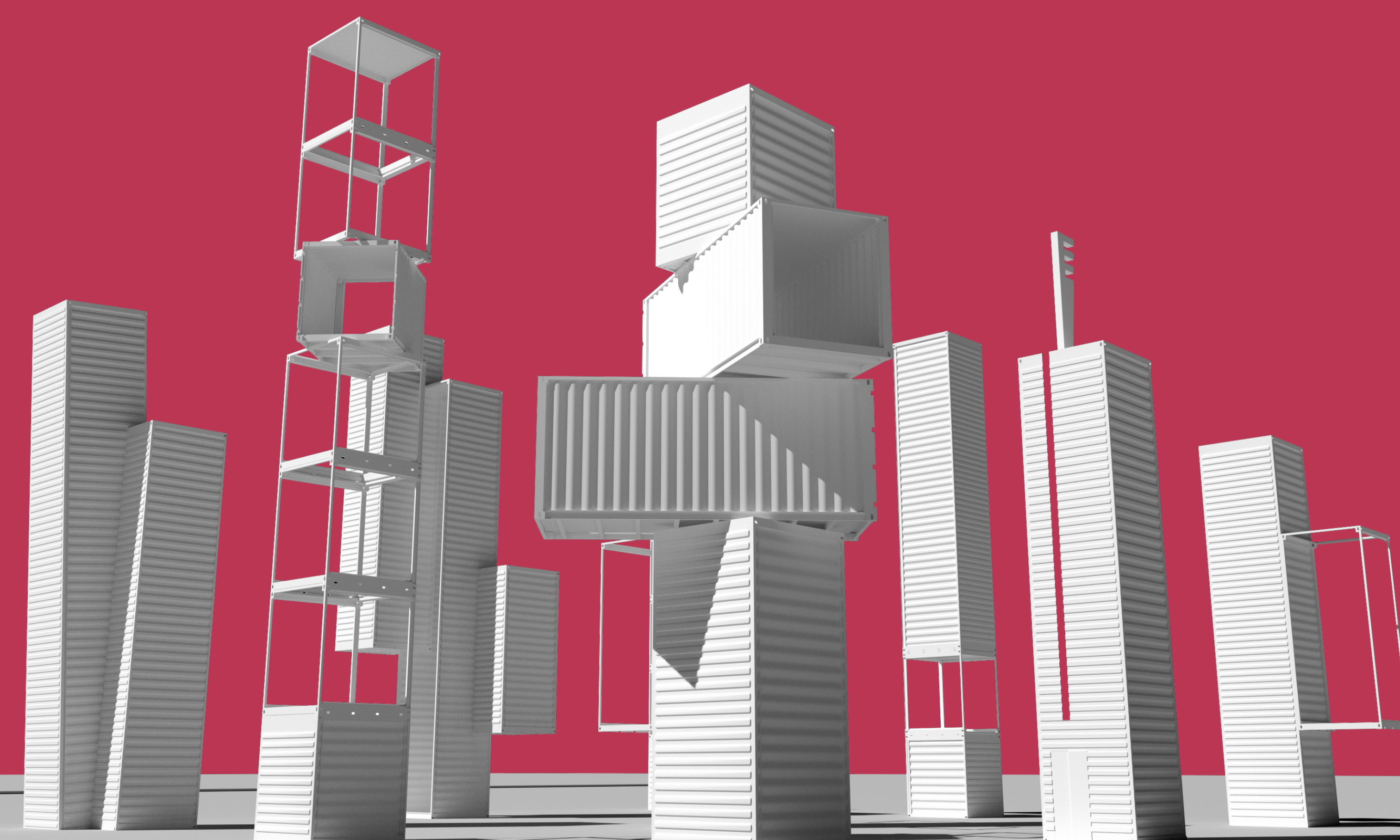
In that regard, we addressed this topic by using containers of various dimensions (from 10' to 53') and offering new urban "signs" that are unique and very commercially attractive and will catch the eye of the clients or city-dwellers, any time during the day or night.

Depending on the project, the shipping containers will serve as a point of reference for an entrance, a window-shop, an urban marker, an event marking (specific date in a national calendar, tradeshow, sports meetings, non-profit event, etc.) and advertising marking.

This preliminary work is only an outline - to show all the possibilities that we can create from using these containers - and we are remaining open to any specific request you may have in order to create new and innovative designs and styles.









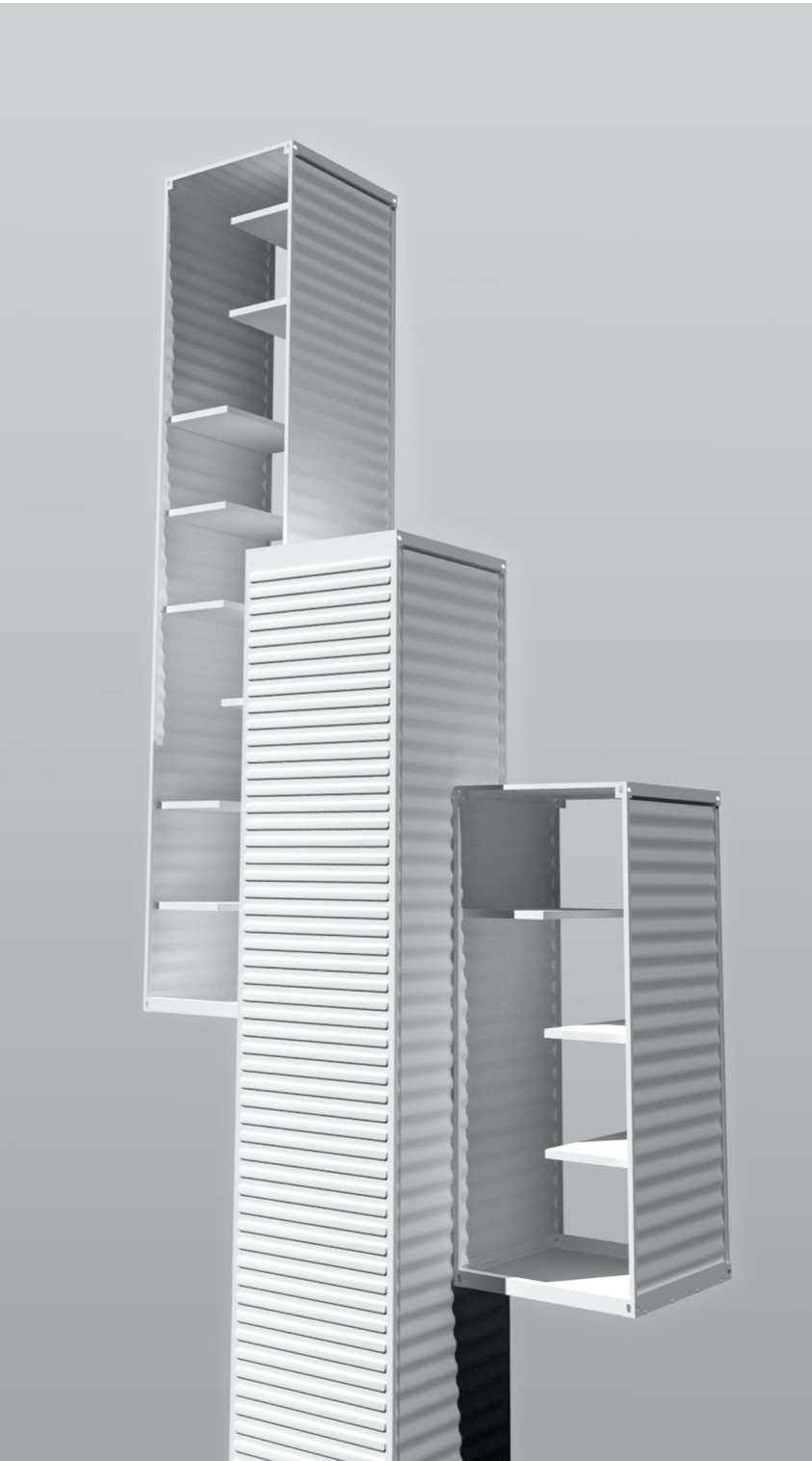




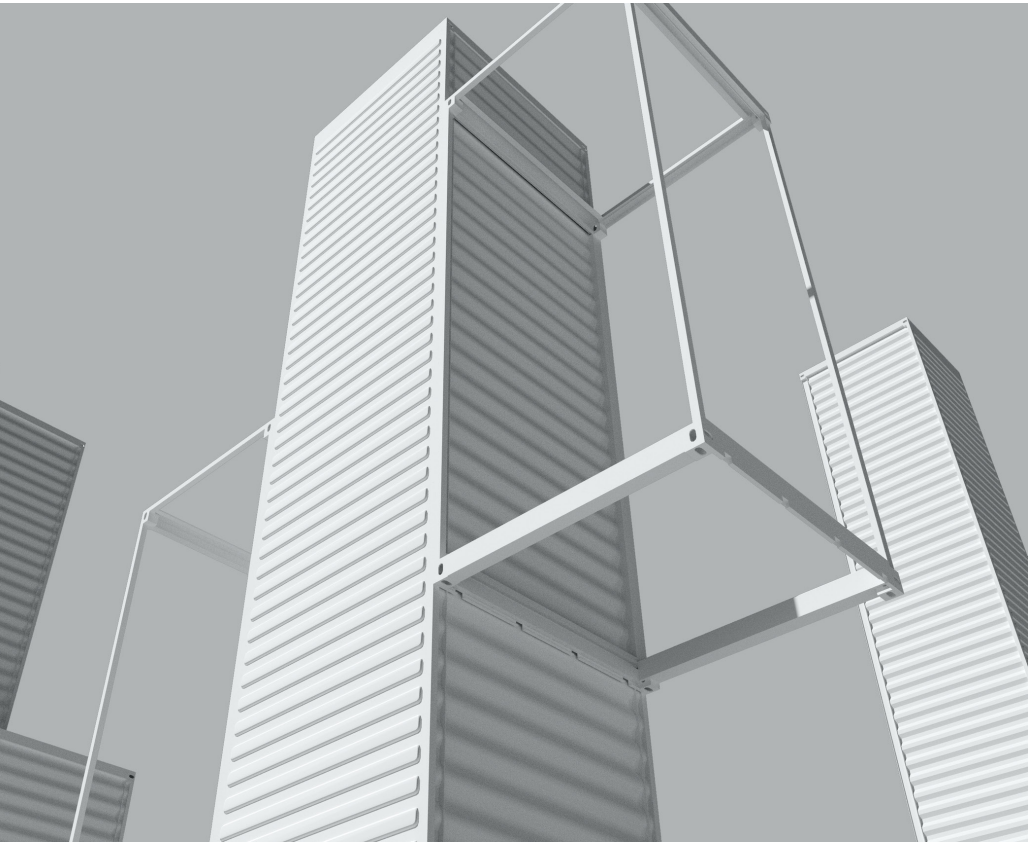
HANOVER

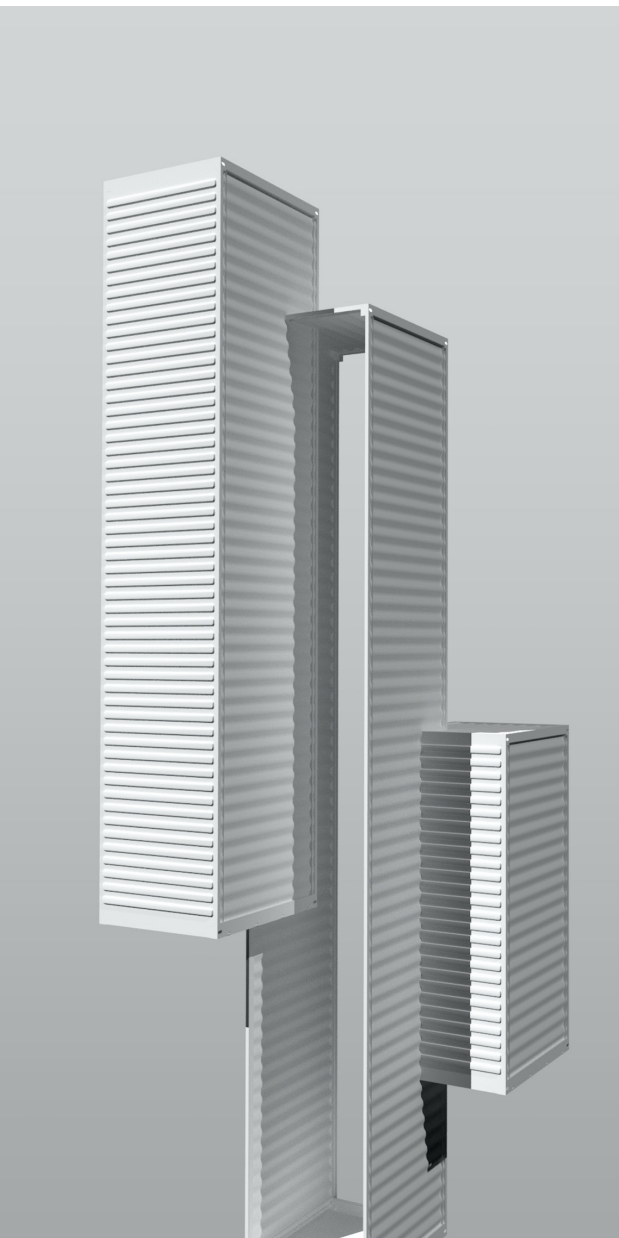
Post

RE OPEN NOW OPEN
USHI

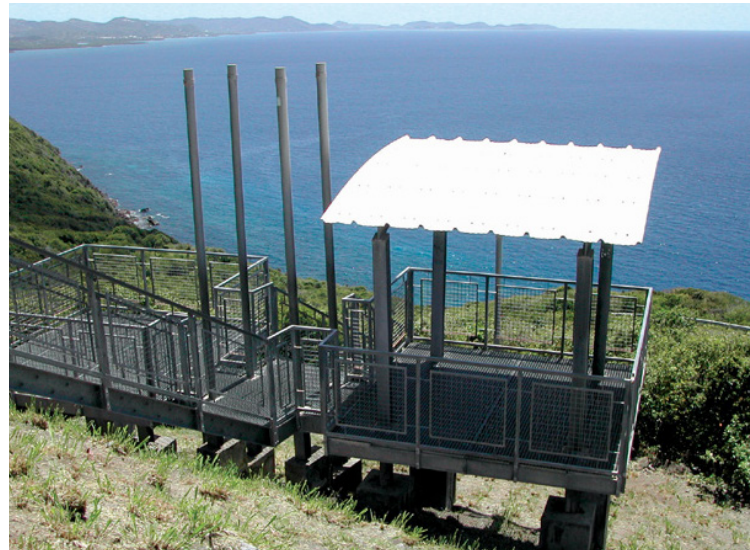












Claude YACOUB

Architect DESA, France

Born in Martinique, France (1962), lived most of his life in Fort-de-France and Paris, as well as in Damas. Lives in Houston since 2020.

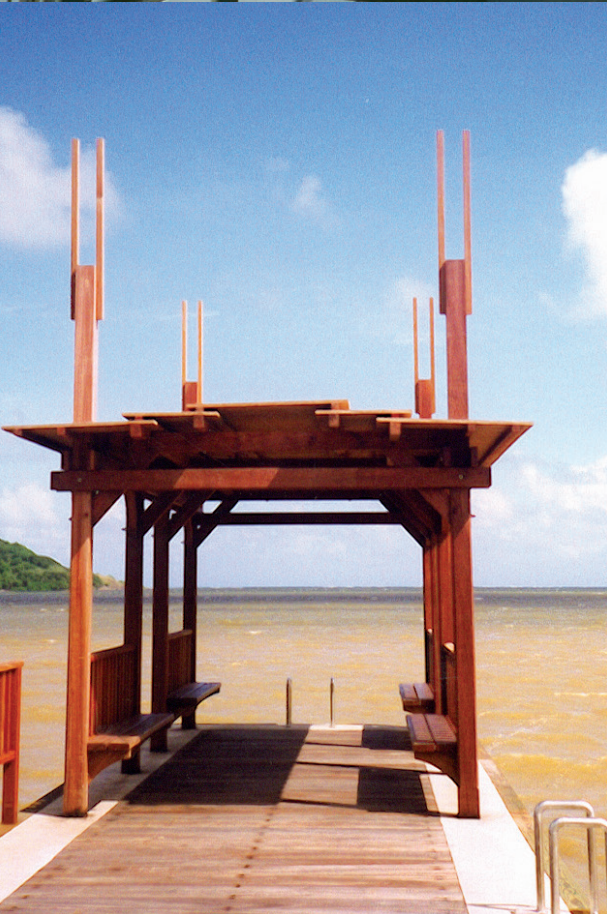
Architect, graduated from the École Spéciale d'Architecture (ESA), Paris (1989). He also holds a Master in sustainable development from the same architecture school ESA (2008) and a Ph.D. in Information Science and Communication from Université Paris 8 (2011).

Strong with a 30-year experience as an independent architect in France, he has completed many projects in the fields of architecture, urbanism, design, and artistic structures.

Simultaneously, he has been teaching for 25 years: architecture, urbanism, design, and fine arts (Paris, Fort-de-France, Damas and Montréal).

As an associate researcher at the Citu-Paragraphe laboratory, Université Paris 8, he has published numerous scientific publications (personal articles and co-directed publications) and participated in international conferences.

Moreover, he is strongly involved in the associative field with the creation of a popular university, which has worked to train architects and engineers on the topics of rebuilding after natural disasters and conflicts.





Copyright © 2021 Namma & Containers, LLC